

UNODENT

Dental Collection 2022



Our products

Helping you create beautiful smiles for over 45 years.

UnoDent has been at the heart of DD for many years. Our range of products has been developed over time by listening to our customers, to suit the needs of dentists and practices up and down the country.

Discover for yourself the innovation and quality that the range can offer with the UnoDent Dental Collection 2020.

Each section of our collection has been **designed around dental procedures**, making it even easier to locate exactly what you need.



What's Inside?



Needles & Syringes

4



Infection Control & Consumables

8



Examination

24



Needle Holders & Scissors

34



X-Ray

38



Oral Hygiene
& Prevention

42



Endodontics

106



Surgical

142



Burs

56



Posts & Cores

118



Orthodontics

146



Restoratives

78



Impression

120



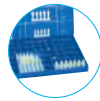
Laboratory
Supplies

164



Matrix

100



Crown, Bridge
& Veneers

126



Polishing

102



Extraction

134



Needles & Syringes

[Click the product codes to view more information](#)

Needles

Sterile Dental Needles

Our Sterile Dental Needles are sterilised using ethylene oxide and individually packed in tamper-evident tubes. The needles feature a tri-bevel point for easy tissue penetration, a high tech non-toxic, pyrogenic free tube and round cutting edge to help protect the gums.



Sterile Anaesthetic Dental Needles

27GL (0.4 x 32mm).

Box 100.

ANU040



Sterile Anaesthetic Dental Needles

30GL (0.3 x 25mm).

Box 100.

ANU060



Sterile Anaesthetic Dental Needles

27GS (0.4 x 21mm).

Box 100.

ANU045



Sterile Anaesthetic Dental Needles

30GS (0.3 x 21mm).

Box 100.

ANU030, ANU050

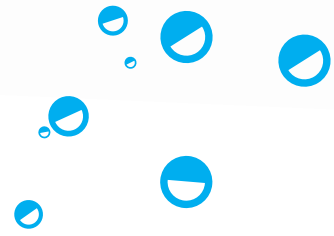


Sterile Anaesthetic Dental Needles

30GUS (0.3 x 12mm).

Box 100.

ANU055



Syringes

Metal Syringes



Intraligamental Infiltration - Sopira Citoject

1.8ml. Each.

ASU016



Aspirating Cartridge Syringe - Breech Loading

1.8ml or 2.2ml.

For use with Standard Cartridges. Each.

ASP199, ASP200



Self-Aspirating Cartridge Syringe - Astra

2.2ml. For use with Dentsply

Sirona Self Aspirating Cartridges only. Each.

ASP220



Self-Aspirating Cartridge Syringe - Universal Side Loading

2.2ml. For use with Standard

Cartridges. Each.

ASR050



Intraligamental Infiltration - Paroject

Syringe 1.8ml or 2.2ml.

ASU018, ASU019



Aspirating Cartridge Syringe - Side Loading

1.8ml or 2.2ml.

For use with Standard Cartridges. Each.

ASP209, ASP210



Self-Aspirating Cartridge Syringe - Breech Loading

2.2ml. All Stainless Steel. For

use with Dentsply Sirona Self Aspirating Cartridges only. Each.

ASP221



Cartridge Syringe - Breech Loading

1.8ml or 2.2ml.

For use with Standard Cartridges Each.

ASB109, ASB110, ASB115, ASB111





Disposable Syringes



Sterile Disposable Syringes

2ml or 5ml. Without Needles.
Individually sterile-packed.
Box 100.
SYU002, SYU005



Sterile Luer Lock Syringes

2ml, 3ml or 5ml.
Disposable. Without
needle. Box 100.
SYU202, SYU203, SYU205

Syringe Accessories



Anti-Needle Stick Device

Jenker Type. Autoclavable.
Each.
DNE150



Sharps Box

0.35L Capacity. Oval Base
4 x 8.5cm, Lid 5 x 12.5cm,
Height 16cm. Pack 5.
ANW301

Why you love UnoDent

"I like the fact that the standard is comparable to the branded products and the quality is the same or better."

Saima Rennie,
Principal Dentist



Infection Control & Consumables

[Click the product codes to view more information](#)

Due to Covid 19, Infection control & consumables stock availability changes on a daily basis. Alternative products may be suggested on the occasion that something isn't available. Please log into your DD account for current stock levels.

Wipes



Surface Disinfectant Wipes - Small

Alcohol-based. Lemon. 185 x 125mm. Effective against bacteria and viruses including: MRSA and Coronavirus. 100 Wipe Tub or Refill. CAW570, CAW575



Surface Disinfectant Wipes - Large

Alcohol-based. Lemon. 200 x 200mm. Effective against bacteria and viruses including: MRSA and Coronavirus. 200 Wipe Tub or Refill. CAW580, CAW585



UnoWipes Disinfectant Wipes

Alcohol-based. 200 x 200mm. Effective against bacteria and viruses including: MRSA and Coronavirus. 200 Wipe Tub or Refill. CAW565, CAW566



Surface Disinfectant Wipes - Alcohol-free

Mint. 200 x 200mm. Effective against bacteria and viruses including: MRSA and Hepatitis B. 200 Wipe Tub or Refill. CAW590, CAW595



pHN Multi Surface Wipe

Contains no alcohol or disinfectant. 280 x 250mm. 255 Wipe Tub or 3 x 225 Wipe Refill Pack. CAW650, CAW655



Lint Free Drying Cloths

30cm x 37cm. 60% viscose and 40% polyester. Box 400. CAW005

Why you love UnoDent

"Their hygiene products are considerably more cost effective especially in this current covid climate where expenditure of running a dental practice has substantially increased."

Mr Piyush Patel,
BDS MFDSRCPS(Glas)

Disinfectant



Surface Disinfectant Spray

Alcohol based. Lemon.
Effective against enveloped viruses. 500ml or 5L.
GSC300, GSC305



Surface Disinfectant Spray - Alcohol-Free

Mint. Effective against bacteria and viruses including MRSA. 500ml or 5L.
GSC320, GSC322



Rotary Instrument Disinfectant

Ready-to-use disinfectant for rotating instruments. Aldehyde and phenol free. 2L.
GEC000



Instrument Cleanser/Disinfectant

For instruments, burs and endodontic instruments.. Aldehyde and phenol-free. 2L.
GIC200



Disinfection Bath

3 Litre capacity. 3 piece bath set: tray, lid and basket. 26 x 18 x 12.5cm.
GXU005



Unosept Surface Disinfectant

Ready-to-use. Effective against bacteria and viruses including MRSA. 5L with key.
GSU030



Antibacterial Floor Cleaner

Suitable for tiles, composite and other synthetic flooring. Makes 250L of solution. 5L.
GSC315



Rotary Instrument Cleanser

Ready-to-use. Suitable for use with or without the aid of ultrasonics. 2L.
GEU010



Surgical Instrument Cleanser/Disinfectant

Instrument pre-soak and high level disinfectant. Aldehyde-free. 2L.
GIU010



Dental Unit Water Cleaner

Concentrate. For routine decontamination of the dental pressurised water lines. Makes 100L of solution. 2L Bottle.
GIC300



Aspisept Daily

Aspirator Cleanser/ disinfectant. Makes 100L of solution. 2L.

GMU015



AutoRinse Daily Aspirator Cleaner

Aldehyde free. Effective against bacteria and viruses including E. coli. Makes 100L of solution. 2L.

GMC100



Impression Disinfectant Powder

Effective against bacteria and viruses including Hepatitis C. Makes 35L of working solution. 700g.

GJC100



Suspension Foam Spray

Ready-to-use. Keeps dirty/ soiled dental instruments moist prior to disinfection and decontamination 500ml.

GIC000



Aspisept Weekly

Aspirator Cleanser. Makes 100L of solution. 2L.

GMU020



AutoRinse Weekly Aspirator Cleaner

Aspirator Cleanser. Acid based. Makes 100L of solution. 2L.

GMC105



pH Neutral Detergent

Lemon. Low level detergent. Alcohol-free. 500ml.

GSC325



Hand Disinfectant Gel

Pink. Suitable for frequent use. Effective against enveloped viruses. 250ml, 500ml or 5L

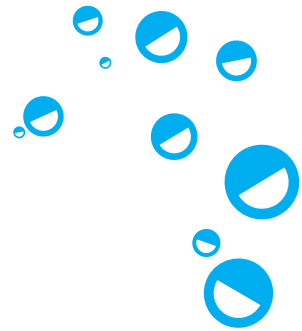
GHU125, GHC052, GHU130



Enzymatic Ultrasonic Cleaner

For pre-cleaning of medical devices 5L makes 166L. 1L or 5L bottle.

GUC000, GUC005



Aspirators



Disposable Aspirator Tubes

135 x 11mm. White, Blue, Green or Orange. 45/45 degree ends. Polyethylene. Pack 100.

CJU000 - CJU003



Disposable Angle for Aspirator Tubes

For Disposable Aspirator tubes: CJU000, CJU001, CJU002 and CJU003. Latex free. Pack 100.

CJU020



Disposable Aspirator Tips - 16mm

White or Yellow. Child or Adult. Latex free. Fibreglass free. Pack 50.

CJT060, CJT062, CJT063



Disposable Aspirator Tubes - Vented

'S' shape end. White, Blue or Green. Single rectangular ventilation at one end. Pack 100.

CJU010 - CJU012



Disposable Aspirator Tips

Autoclavable. Polypropylene. Suitable when treating children. Latex free. Pack 25.

CJU030



Disposable Aspirator Tips - 16mm Adult

Blue. Pack 50.

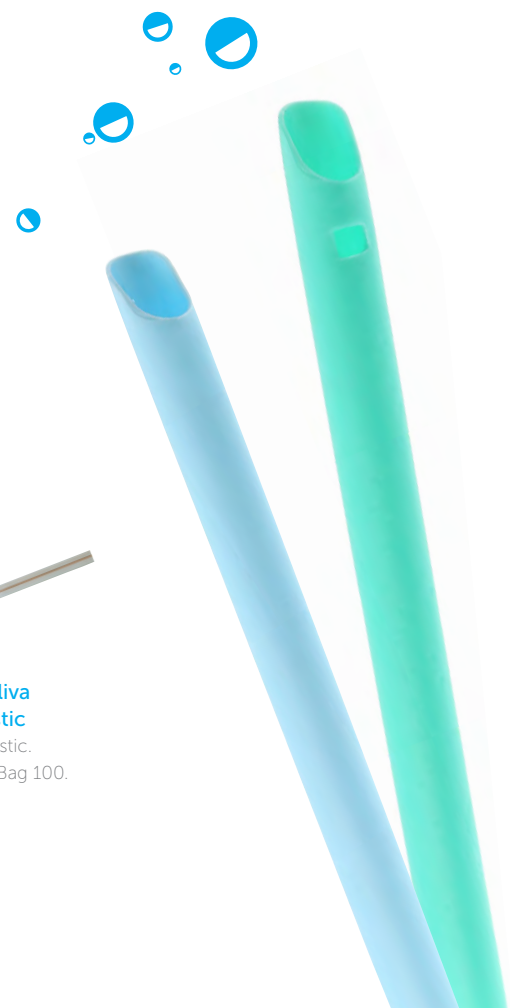
CJT064



Disposable Saliva Ejectors - Plastic

Flexible clear plastic. 13 cm or 15cm. Bag 100.

CJE410, CJE420





Disposable Multi-Colour 3-in-1 Tips

4 air core design. Assorted colours. To fit American style syringes. Pack 250.

CJT290



Disposable 16mm Adaptor

To connect aspirator tip & tubing. White. Bag 50.

CJT030



Autoclavable Aspirator Tips - Adult 11mm

Grey. Bag 10.

CJT000



Autoclavable Aspirator - Adult 11mm - Surgical

White. Autoclavable to 134°C. Bag 25.

CJT901



Disposable 3-Way Tips

For triple syringe with easy snap on adaptor fittings. White. Pack 200.

CJT860



Disposable 11mm Adaptor

To connect aspirator tip & tubing. White. Bag 50.

CJT035



Autoclavable Aspirator Tip 16mm

Yellow, Pink, Blue, Orange, Lime Green or Grey. Bag 10.

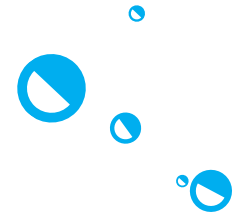
CJT001 - CJT005, CJT115



Autoclavable Aspirator 11mm Child

Grey. Bag 5.

CJT912



Dispensers



Bib Dispenser - Springloaded with Lid

For COD300-302.
175 x 130 x 170mm. Each.
CAU010



Bib Dispenser - Short

For use with COD300-302.
177 x 129 x 263mm. Each.
CAU110



Bib Dispenser - Medium

205 x 210 x 195mm. Each.
CAU122



Bib Dispenser - Tall

For COP015.
204 x 100 x 387mm. Each.
CAU112



Flat Pack Apron Dispenser - Large

650 x 365 x 20mm. Each.
CAU123



Bib Dispenser - with Lid

For COD300-302.
185 x 130 x 170mm. Each.

White	CAU030
Blue	CAU032
Transparent	CAU034
Blue Transparent	CAU036
Smokey Transparent	CAU038



Bib Dispenser - 10" Roll

For COP100,101 & 102.
290 x 135 x 141mm. Each.

CAU113



Bib Dispenser - 11" Roll

For 11" bib rolls.
315 x 135 x 141mm. Each.

CAU120



Bib Dispenser - Roll

For COP100-102.
280 x 125 x 136mm. Each.

COP110



Apron Dispenser for Flat Pack Aprons

For COD010.
440 x 32 x 448mm. Each.
CAU121



Glove Box Dispenser - Single

For most standard size
glove boxes.
254 x 86 x 128mm. Each.
CAU100



Glove Box Dispenser - Double

For most standard size glove
boxes.
254 x 86 x 250mm. Each.
CAU101



Glove Dispenser

White, Plastic. For use
with most standard size
glove boxes. 270 x 100 x
140mm. Each.
CGX010



Glove Box Dispenser - Triple

For most standard size glove
boxes. 254 x 86 x 370mm.
Each.
CAU102



Glove Box Dispenser - Quad

For most standard size
glove boxes.
254 x 86 x 490mm. Each.
CAU103



Single Glove Box & Apron Dispenser

For use with most standard
size glove boxes and 10"
apron rolls. Each.
CAU104



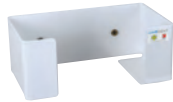
Dispensers



Face Mask Dispenser - Tie-on Masks

For use with CHC021, CHU015, CHU016 and CHU017. 193 x 110 x 110mm. Each.

CAU106



Face Mask Dispenser - Ear Loop Masks

For CHU018, CHU019 and CHU020.

193 x 110 x 80mm. Each.

CAU105



Facial Tissue Dispenser

For CAD050. Each.

CAF015



Cotton Pellet Dispenser

White. Autoclavable. Dispenser with spring. 4 x 4 x 5cm. Each.

CCC525



Cotton Wool Roll Dispenser

Plastic: Grey, Yellow, Red, Azure, Ivory or White.

9.5 x 5 x 10.5cm. Each.

CCC526 - CCC532

Glass: Azure. 9.5 x 5 x 10.5cm. Each.

CCC531



Face Mask Dispenser

Transparent. 20 x 12 x 11cm. Each.

CHX010



WrapAround Headrest Cover Dispenser

For use with CVH147.

370 x 42 x 261mm. Each.

CAU115



Gauze Dispenser - Double

White. Plastic. Autoclavable.

Each.

CCU010



Cotton Wool Roll Dispenser - One Touch

White or Blue. Rolls automatically dispensed into drawer. 3 different slots for roll sizes 1, 2 and 3.

9.5 x 5 x 10.5cm. Each.

CCC533, CCC534



Cup Dispenser
Transparent. Each.
CNK100



Hand Pump 3ml
Each.
GXU010



5L hand pump
Each.
GXC205



**Surgical Scrub 500ml
hand pump**
Each.
GXC210



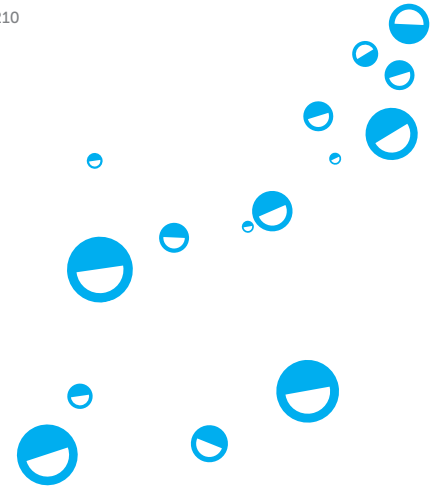
**Saliva Ejector
Dispenser**
Transparent. W 15 x L 16 x
H 12cm. Each.
CJX010



Dispenser Tap for 5L
Each.
GXC206



Dosing Device 20ml
Each.
GXU001, GXC200



Protective Barriers



WrapAround Tube Sleeve - Strips

457 x 53mm or 457 x 44mm
Pack 250.
CVH152, CVH154



WrapAround Tray Sleeve

To protect instrument trays.
305 x 432mm. Pack 500.
CVH120



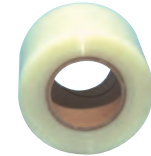
WrapAround X-Ray Head Cover

381 x 661mm. Pack 250.
CVH125



WrapAround Curing Light Sleeve

295mm x 250mm. Pack 250.
CVH130



WrapAround Barrier Film Roll

Lightly adhesive thin film.
Clear or Blue. 102 x 152mm.
Roll 1200.
CVH100, CVH101



WrapAround Syringe Sleeve

To protect the 3 in 1 syringe.
64 x 255mm. Roll 500.
CVH135



WrapAround Full Chair Cover

1120 x 1374mm. Roll 150.
CVH145



WrapAround Half Chair Cover

840 x 916mm. Roll 125.
CVH146



WrapAround Headrest Cover

285 x 255mm. Roll 250.
CVH147



Camera Sleeves

Universal. Box 250. 140063
Shortcam. Box 200. 140064

Safety Glasses & Visors



Patient Barrier Glasses

Lightweight. Can be worn over prescription glasses. Each.

PYG170



Coversight Safety Glasses

Anti-fog and anti-scratch. Clear or Smoke lenses. Each.

PYS015, PYS016



CrackerJack Safety Glasses

Anti-fog, anti-scratch. Lightweight with flat temples. Clear, Smoke, Yellow, Orange or Blue lenses. Each.

PYS000 - PYS004



UnoTect Patient Lenses

12 Patient Lens Kit

1 frame and 12 disposable lenses. Frame colours: Blue, White, Pink, Green or Yellow.

PYG310 - PYG314

Refill pack. Clear. Pack 12.

PYG321

50 Patient Lens Kit

5 frames: Blue, White, Pink, Yellow & Green and 50 disposable lenses.

PYG320

Refill lenses. Clear. Pack 12.

PYG322



Pop Safety Glasses

For Children. Lightweight. Clear or Smoke lenses. Each.

PYS035, PYS036



Equinox Safety Glasses

Ideal for lab use. Anti-fog, anti-scratch. Designed with a removable insert. Clear or Smoke lenses. Each.

PYS030, PYS031



Safety Glasses

Anti-fog, anti-scratch and flexible. Brown, Clear, Orange, Amber or Smoke lenses. Each.

PYS060 - PYS064



UnoTect Plus Visor

1 frame and 12 disposable shields. Frame colours: Blue, White, Pink, Green or Yellow.

PYG300 - PYG304

Refill pack.

PYG323

Sterilisation



Instrument Rack

Large. Each.

GTT010



Stainless Steel Cassette

Each.

GTS000



Metal Perforated Trays

Red, Green, Blue, Silver or Gold. Each.

GTT030 - GTT060



5 Instrument Cassette

Each.

GTT301



10 Instrument Cassette

Each.

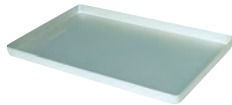
GTT303



Instrument Tray Cover

Silver. Each.

GTT005



Metal Instrument Trays

Silver, Red, Green, Gold.

Each.

GTT010 - GTT014



Plastic Instrument Trays

Blue, Grey, Red, White, Yellow or Green. Set 2.

GTT440 - GTT465



3 Instrument Cassette

Each.

GTT300



7 Instrument Cassette

Each.

GTT302



Silicone Tubes

5 Inst Tray or 10 Inst Tray.
Pack 12.

GTT307, GTT309



Disinfection Box

Each.

GTU005



Steriltray

Each.

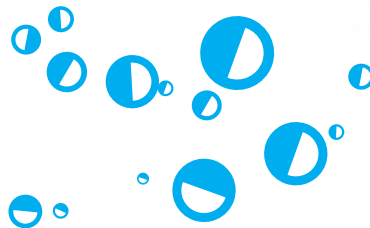
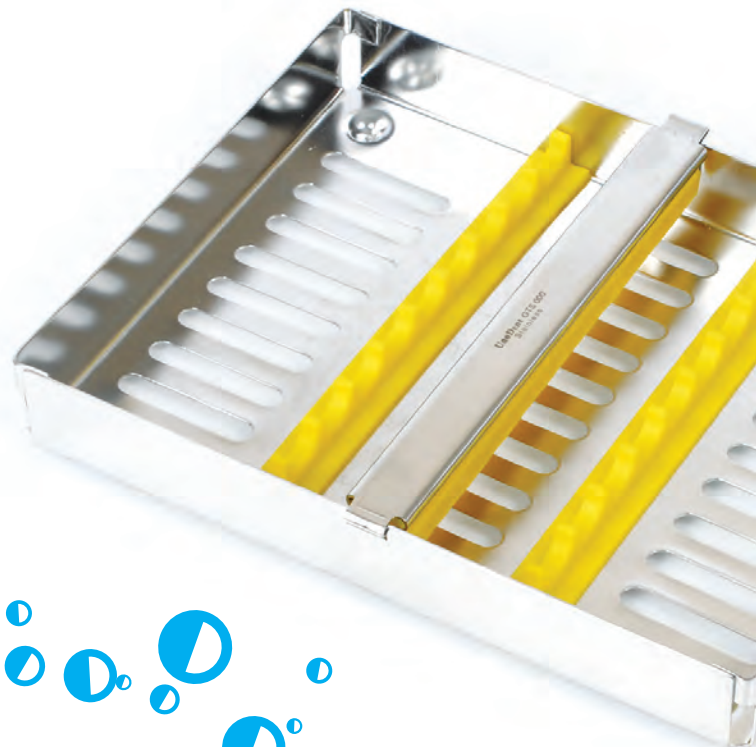
GTU010



Boxtray for Steriltray

Each.

GTU020



Sterilisation



Sterilisation Pouches

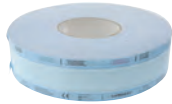
Features an adhesive strip and transparent blue tinted 2-ply laminate film front for easy instrument identification.

Pack 200

60 x 100mm	GBS505
90 x 140mm	GBS510
90 x 200mm	GBS515
90 x 230mm	GBS520
135 x 255mm	GBS525
190 x 330mm	GBS535
254 x 375mm	GBS530
305 x 381mm	GBS550

Pack 250

230 x 305mm	GBS560
270 x 360mm	GBS545



Sterilisation Flat Reel

Designed to be cut to length and sealed at both open ends.

200m Roll

50mm	GBS570
75mm	GBS571
100mm	GBS572
150mm	GBS573
200mm	GBS574
250mm	GBS575
300mm	GBS576



Hangline Sterilisation Pouches

Pack 200

90 x 230mm GBS620





Purified Water

For use in autoclaves and handpieces. 2 x 5L.

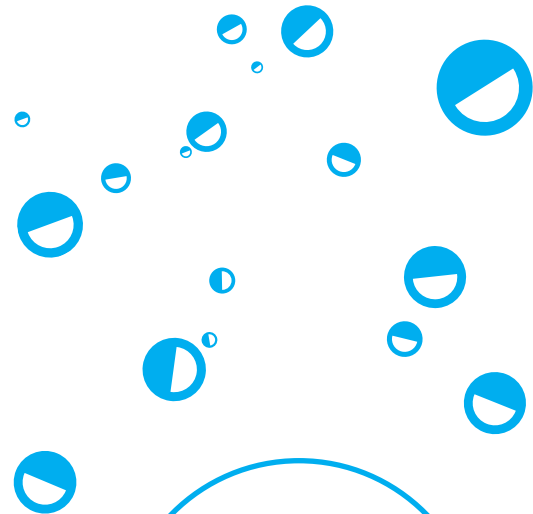
EVS205



TST Indicator Strip

Allows the end user to single out individual trays, packs or pouches that were not exposed to sufficient sterilisation conditions. Pack 100.

GAI085



Why you love UnoDent

"Their Sterilisation Pouches have handy colour changing arrows to show when they have been processed."



Examination

[Click the product codes to view more information](#)

Mirrors

Our mouth mirrors are designed to give you a great working view whilst being comfortable to hold.



Mouth Mirror
Front surface plane 4
DMO120



Mouth Mirror - Sterile single packs
Surface plane 4. Pack 50 or 200.
DMO420, DMO205



Mouth Mirror Handle
Hexagonal grip.
DMH410



Mouth Mirror - Bulk packs
Mirror and handles.
Surface plane 4
DIM104



Mouth Mirror
Magnifying 4 Rear Surface.
Autoclavable
DMS010



Mouth Mirror
Rear surface plane 4
DMO350



Mouth Mirror Handle
Round grip.
DMH010, DMH050



Mouth Mirror Handle
Hollow Ergonomic.
DMH011



Single use mouth mirror and probe pack
1 CPITN Probe No.8 DE &
1 Front Surface Mirror No.4
DPR180



Anti Mist Mirror Spray
Prevents condensation on mouth mirrors. 50ml.
DMS000

Probes



6 SE

Octagonal or Round Handle. Autoclavable.
DPR113, DPR161, DPR151



8 DE

Sterile probe.
DPR175



9 SE

Octagonal or Round Handle. Autoclavable.
DPR115, DPR163, DPR153



6 Bulk Pack

Pack 10
DIR106



8 SE

Octagonal or Round Handle. Autoclavable.
DPR114, DPR162, DPR152



11 DE

Octagonal or Round Handle. Autoclavable.
DPR165, DPR158



Single use mouth mirror and probe pack

1 CPITN Probe No.8 DE &
1 Front Surface Mirror No.4
DPR180





14W
Williams. Octagonal Handle.
Autoclavable.
DPR167



54 SE
Octagonal or Round
Handle.
Autoclavable.
DPR164, DPR157



10 Scheff DE
Octagonal Handle.
Autoclavable.
DPR166



23 SE
Octagonal Handle.
Autoclavable.
DPR120



AMP 3
Octagonal Handle.
Autoclavable.
DEP300



AMP 5
Octagonal Handle.
Autoclavable.
DEP310

Why you love
UnoDent

"They have an extensive range
of quality hand instruments that
offer a great level of precision"

Perio Probes



12 DE - Bulk pack

Perio. Sterile CPITN.
Round Handle.
Single use. Pack 50.
DPR170



15 UNC SE

Perio. Round Handle.
Autoclavable.
DPR135



CPITN-C - Bulk pack

Perio. Autoclave before
use. Pack 10.
DIR200



14W SE

Perio. Octagonal or
Round Handle.
Autoclavable.
DPR116, DPR159



CPITN-C SE

Perio. Octagonal or Round
Handle. 0.5mm ball at the
tip. Autoclavable.
DPR130, DPR160



Tweezers



College - Angled

Stainless steel. Autoclavable.
DTW312



College - Angled

Stainless steel.
Autoclavable.
DTW318



College - Endo Lock

Stainless steel.
Autoclavable.
DTW150



College Fig 8 - Plain Handle

Stainless steel. Autoclavable.
DTW100



College - Curved

Stainless steel. Autoclavable.
DTW310



College - Angled Locking

Stainless steel. Autoclavable.
DTW320



College Fig 2 - Plain Handle

Stainless steel. Autoclavable.
DTW105



Cotton Products



Cotton Wool Rolls

Size 1 or 2. Made from 100% absorbent cotton. Box 1000.
CCA104, CCA105



Cotton Wool Rolls - Sterile

Size 2. 100% pure cotton. Latex-free. 20 packs. 6 sterile rolls per pack.
CCA110



Cotton Wool Holder

Chrome plated. Diameter 5.5cm, Height 7cm.
CCC537



Gauze Squares

12.5cm x 12.5cm or 15cm x 15cm. 100% pure cotton. Box 500.
CCN620, CCN625



Throat Pack

10m x 6cm. 100% pure cotton. 10m Roll.
CCT615



Cotton Roll Clip

Single-use. Pack 100.
CCC550



Cotton Wool Pellets

Size 2. 100% pure cotton. Diameter 5.5mm. Box 800.
CCE611



Cotton Wool Pellets - Sterile

200 packs with 6 sterile pellets per pack.
CCE615



Non Woven Swabs

8 ply. 5cm x 5cm or 7.5cm x 7.5cm. Box 100.
CCN803, CCN802



Throat Pack with String

6 x 6cm. 100% pure cotton. Pack 50.
CCT705

Tray Liners, Cups & Mouthwash



Tray Liners - Uncoated

275 x 175mm or
305 x 200mm. Pack 250.

CUD060, CUD065



Tray Liners - PE Coated

4ply white paper with a PE
layer. 275mm x 175mm.

Pack 4 x 250.

CUC100



DispoTray - Biodegradable

Disposable pre-formed
tray liners. 280 x 180mm.

Transparent PLA. Pack 100.

CUD012



Concentrated Mouthwash

Mint. Makes 1,000 cups of
mouthwash. Alcohol and
sugar free. 90ml.

PDM320



Mouthwash Tablets

Alcohol free. Pack 1000.

Pink - Thymol.

CMT010

Green - Mint.

CMT015

Orange - Orange.

CMT017



DispoTray - Large

Disposable pre-formed
tray liners. 290 x 190mm.
Orange, Blue, Green,
Yellow or White. Pack 50.

CUD000 - CUD003, CUD010



DispoTray - Small

Disposable pre-formed tray
liners. 190 x 146mm. White.
Pack 50.

CUD005



Plastic Cups - 180ml

White, Lilac, Light Blue or
Aqua Blue. Latex-free.
Case 2000.

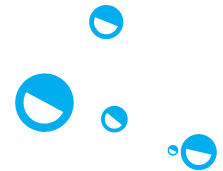
CNK015, CNK002, CNK004,
CNK006



Plastic Cups - 200ml

White. Case 3000.

CNK030



Gloves



Synthetic Gloves

Latex free. Stretch vinyl.
Extra Small, Small, Medium,
Large or Extra Large. Box 100.
CGU300 - CGU304



Accelerator Free Nitrile Gloves

Extra Small, Small,
Medium. Ambidextrous.
Latex-free. Ice Blue.
Box 200.
CGN280 - CGN295



Nitrisoft Nitrile Gloves

Extra Small, Small,
Medium, Large.
Ambidextrous. Latex-free.
Blue. Box 200.
CGN050 - CGN070



Latex Gloves

Powder-Free. Extra Small,
Small, Medium, Large, Extra
Large. Box 200.
CGU256 - CGU290



Vinyl Gloves

Powder-Free. Extra Small,
Small, Medium, Large.
Box 200.
CGU310 - CGU313

Why you love
UnoDent

"They have gloves to fit all
types of preference"

Bibs



Disposable Bibs - 2ply

Perforated cut-out for neck and tie fastening. Latex-free. Fits dispenser CAU113 and COP110. 50 x 60cm. Blue, Green or White. Roll 80. COP100, COP101, COP102



Disposable Bibs - 3ply

45 x 32.2cm. 2-ply paper, 1-ply PE. Blue, Green or White. Pack 500. COD301, COD302, COD300



Bib with Collection Pocket

Disposable. 1 ply Plastic & 1 ply Paper. (38 x 68cm). Pack 100. COP015



Bib Holder - Thermoplastic

White, Blue or Pink. Latex free. Autoclavable 121°C. Each. COX215, COX216, COX217



PEVA Bib - Blue

42.5 x 57.5cm. Hook and loop neck fastening. Polyethylene vinyl acetate. Each. COP020



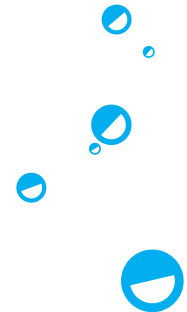
PEVA Bib - White

60 x 45cm. White Hook and loop neck fastening. Polyethylene vinyl acetate. Each. COP022



Bib Chain - Metal

Steel, Nickel plated. Each. COX010





Needle Holders & Scissors

[Click the product codes to view more information](#)

Needle Holders



Gillies - Left handed
Autoclavable. Each.
DNE110



**Thomson-Walker
8" Screw Joint**
Autoclavable. Each.
DNE130



**Mayo Hegar
Size 6"**
Autoclavable. Each.
DNE144



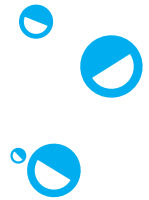
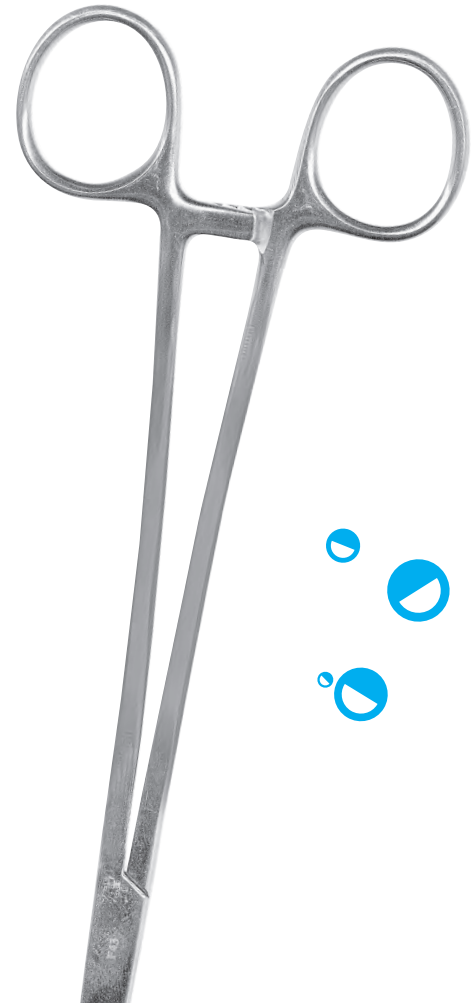
Gillies - Right Handed
Autoclavable. Each.
DNE115



Mathieus Size 7"
Autoclavable. Each.
DNE140



Mayo Hegar Size 7"
Autoclavable. Each.
DNE145



Scissors



5.5" Sharp/Sharp

Autoclavable. Each.

DSD300



Suture - Curved

Autoclavable. Each.

DSD325



Serrated - Straight

Autoclavable. Each.

DSD350



Bee-Bee Crown - Curved

Autoclavable. Each.

DSD310



General Purpose

Autoclavable. Each.

DSD320



Suture - Straight

Autoclavable. Each.

DSD330



Dressing - all purpose

Autoclavable. Each.

DSD500



Bee-Bee Crown - Straight

Autoclavable. Each.

DSD315

Forceps



Cheatles 8"

Autoclavable. Each.
DCH310



Cheatles 10"

Autoclavable. Each.
DCH312



Fickling - Toothed

Each.
DFO210





X-Ray

[Click the product codes to view more information](#)

Aiming Devices

QuickShot

Our QuickShot digital sensor holders are made from medical grade plastic, autoclavable and are colour coded for easy identification.



Horizontal Bitewing

2607, 3105, 3305, 3307.

Pack 3.

XXB500, XXB503, XXB505,
XXB506



Apical Molar Region

4305, 3905, 3707, 4307.

Pack 3.

XXB514, XXB511, XXB510,
XXB516



Aiming Ring

Fit all holders. Each.

XXB517



Vertical Bitewing/Apical Front

Pack 3.

XXB501, XXB507, XXB504



Starter Kits

3707/2607/P, 3705/2405/P,
4307/3307/P, 4305/3305/P,
4305/3105/P.

XXB509, XXB508, XXB515,
XXB513, XXB512

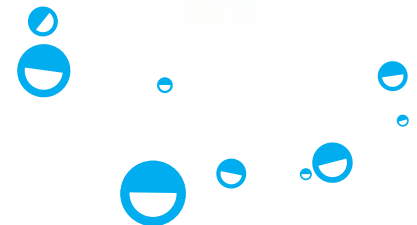


Digital Sensor Holders Kit

For Phosphor Plates.

Size 1 or 2.

XXB499, XXB502



Covers & Sleeves



Barrier Envelopes

Sizes: 0, 1, 2, 3, 4. Pack 100.

QWU000 - QWU004



Bite Block Hygiene Sleeve

4.6 x 2.1cm or 8.0 x 4.0cm. Box 250.

QWU020 - QWU021



Quickshot Sensor Covers

Regular or Large. Box 500.

XXB520 - XXB521



Quickshot Wireless Sensor No.2 Envelope

Box 500.

XXB523



Film Pockets

6.7x9.5cm, 10x13.6cm, 12x12cm, 14x22cm. Box 1000.

XXB350 - XXB351



Bite Covers

Sizes: 0 (20 x 30mm), 1 (20 x 40mm), 2 (30 x 40mm), 3 (27 x 54mm). Pack 200.

QWU010 - QWU013



WrapAround Digital X-Ray Sensor Cover

Latex-free. Size 1 or 2. Pack 500.

CVH150



Quickshot Phosphor Plate Envelopes

Latex-free. Size 1 or 2. Pack 500.

XXB524 - XXB525



Universal Film Mounts

43 x 43mm. Roll of 1000.

XXB300

Film, Materials & Accessories



Developer

Ready to use. 2 x 5L
XUO010



Fixer

Ready to use. 2 x 5L
XUO020



X-Ray Viewer

165mm x 300mm. Each
XXB400



Single Hanger

Autoclavable. Each.
XXH001



Envelopes

Paper. Pack 200.
XXI011



Periapical Speed Film

31 x 41mm. Box 150
Speed E XAU000
Speed F XAU010



Panoramic Green Sensitive Film

Pack 100.
12 x 30cm XGU170
15 x 30cm XGU171



X-Ray Marker

Indelible ink.. Each.
XXI210



10 Hanger

Autoclavable. Each.
XXH010





Oral Hygiene & Prevention

Ultrasonic inserts



DF-3 25K

For use on all stack type (magnetostrictive) ultrasonic scaling units. Recommended autoclave temperature 134°C. Each.

PTD001



DF-10 25K

For use on all stack type (magnetostrictive) ultrasonic scaling units. Recommended autoclave temperature 134°C. Each.

PTD003



DF-1000 25K

For use on all stack type (magnetostrictive) ultrasonic scaling units. Recommended autoclave temperature 134°C. Each.

PTD005



DP-10 25K

For use on all stack type (magnetostrictive) ultrasonic scaling units. Recommended autoclave temperature 134°C. Each.

PTD007



DF-3 30K

For use on all stack type (magnetostrictive) ultrasonic scaling units. Recommended autoclave temperature 134°C. Each.

PTD002



DF-10 30K

For use on all stack type (magnetostrictive) ultrasonic scaling units. Recommended autoclave temperature 134°C. Each.

PTD004



DF-1000 30K

For use on all stack type (magnetostrictive) ultrasonic scaling units. Recommended autoclave temperature 134°C. Each.

PTD006



DP-10 30K

For use on all stack type (magnetostrictive) ultrasonic scaling units. Recommended autoclave temperature 134°C. Each.

PTD008



Scaler Tips



Scaler G1

For EMS	QSU001
For Satelec	QSU055
For NSK	QSU110
For KaVo	QSU221



Scaler G3

For EMS	QSU003
For Satelec	QSU057
For NSK	QSU167
For Sirona	QSU112
For KaVo	QSU223



Scaler G5

For EMS	QSU005
For Satelec	QSU059
For Sirona	QSU169
For KaVo	QSU225



Scaler 10X

For Satelec	QSU052
-------------	--------



Scaler 10P

For Satelec	QSU071
-------------	--------



Scaler G2

For EMS	QSU002
For Satelec	QSU056
For KaVo	QSU222



Scaler G4

For EMS	QSU004
For Satelec	QSU058
For NSK	QSU113
For Sirona	QSU168
For KaVo	QSU224



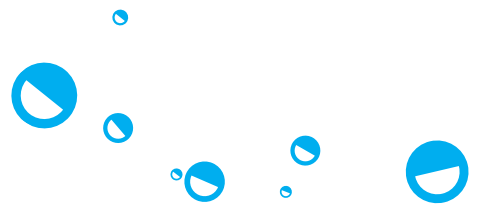
Scaler A1

For Satelec	QSU054
-------------	--------



Scaler 10Z

For Satelec	QSU053
-------------	--------



Perio P1

For EMS QSU008
 For Satelec QSU061
 For NSK QSU117



Perio P4

For Satelec QSU065
 For NSK QSU120
 For Sirona QSU174



Perio H3

For Satelec QSU066



Endo E3

For EMS QSU016
 For Satelec QSU069



Torque Wrenches

For EMS QSU250
 For Satelec QSU255
 For NSK QSU260
 For Sirona QSU265
 For KaVo QSU270



Perio P3

For EMS QSU011
 For Satelec QSU064
 For NSK QSU119
 For Sirona QSU173



Perio P5

For EMS QSU013



Endo E2

For EMS QSU015



Endo E4

For EMS QSU017
 For NSK QSU070

Hand Scalers



H4 Hygienist SE

Round or Octagonal handle. Each.

DSC260, DSC261



H6 Hygienist SE

Round or Octagonal handle. Each.

DSC266, DSC265, DSC352



H6/7 Hygienist DE

Round or SoftGrip handle Each.

DSC267, DSC354, DSC355, DUD009



1 Jacquette SE

Round or Octagonal handle. Each.

DSC293, DSC292



3 Jacquette SE

Round handle. Each.

DSC297



H5 Hygienist SE

Round or Octagonal handle. Each.

DSC263, DSC262, DSC351



H7 Hygienist SE

Round or Octagonal handle. Each.

DSC268, DSC269



H6/7 Single use

Pack 10.

DIS106



2 Jacquette SE

Round or Octagonal handle.

DSC294, DSC295



0/1 McFarlane DE

Round handle. Each.

DSC385

Hand Scalars



2/3 McFarlane DE
Round or SoftGrip
handle. Each.
DSC282, DSC380, DUD011



6/7 McFarlane TC DE
Round handle. Each.
DSC286



204 Sickle DE
Round or SoftGrip
handle. Each.
DSC390, DUD006



311/312 Savler
SoftGrip handle. Each.
DSC291



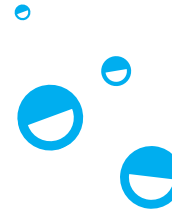
4/5 McFarlane DE
Round or SoftGrip
handle. Each.
DSC284, DSC381, DSC384,
DUD012



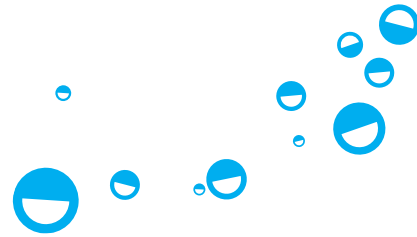
8/9 McFarlane TC DE
Round handle. Each.
DSC288



U15 Towner SE
Round handle. Each.
DSC360



Curettes



1/2 Gracey DE

Round or SoftGrip handle. Each.

DSC300, DSC370, DUD018



5/6 Gracey DE

Round or SoftGrip handle. Each.

DSC372, DUD020



9/10 Gracey DE

Round or SoftGrip handle. Each.

DSC374, DUD022



13/14 Gracey DE

Round or SoftGrip handle. Each.

DSC376, DUD024



5/6 Langer

SoftGrip handle. Each.

DUD036



3/4 Gracey DE

Round or SoftGrip handle. Each.

DSC301, DSC371, DUD019



7/8 Gracey DE

Round or SoftGrip handle. Each.

DSC373, DUD021



11/12 Gracey DE

Round or SoftGrip handle. Each.

DSC307, DSC375, DUD023



1/2 Langer

SoftGrip handle. Each.

DUD035



Lucas 86 Bone

SoftGrip handle. Each.

DSC290

Prophy Paste



Oil-Based - Coarse
Mint. Fluoride free. 250g.
PPA025



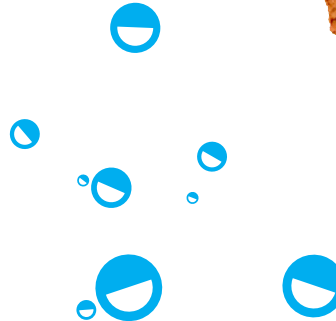
Alpha-Pro - Oil-free - Coarse
Mint. Fluoride free. 300g.
PPA020



Oil-Based - Medium
Orange. Fluoride free. 250g.
PPA030



Alpha-Pro - Oil-free - Medium
Orange. Fluoride free. 300g.
PPA015



Polishing Cups and Brushes



Prophy Cups RA Steel Shank

Latex Free. Vibration-free.
Single-Use. Box 36.

PRC314

Latex Free. Vibration-free.
Single-use. Box 144.

PRC308



Rubber Cups RA Soft

Pink. Latex Free.
Autoclavable. Made from
synthetic elastomer
(polymer). Single-Use.
Box 36.

PRC500



Rubber Cups RA Hard

Blue. Latex Free.
Autoclavable. Made from
synthetic elastomer
(polymer). Single-Use.
Box 36.

PRC502



Rubber Cups Screw-in Medium

Pink. Latex Free. Vibration-
free. Autoclavable. Made
from synthetic elastomer
(polymer). Box 36.

PRC520



Rubber Cups Screw-in Hard

Blue. Latex Free Vibration-
free. Autoclavable. Made
from synthetic elastomer
(polymer). Box 36.

PRC522



Rubber Cups RA Steel Shank

Vibration-free. Single-Use.
Box 36.

PRC310



Rubber Cups RA Medium

Purple. Latex Free.
Autoclavable. Made from
synthetic elastomer (polymer).
Single-Use. Box 36.

PRC501



Prophy Cups Junior Screw-in

Latex Free. Autoclavable.
Single-Use. Box 36.

PRB312



Rubber Cups Screw-in Medium

Purple. Latex Free Vibration-
free. Autoclavable. Made
from synthetic elastomer
(polymer). Box 36.

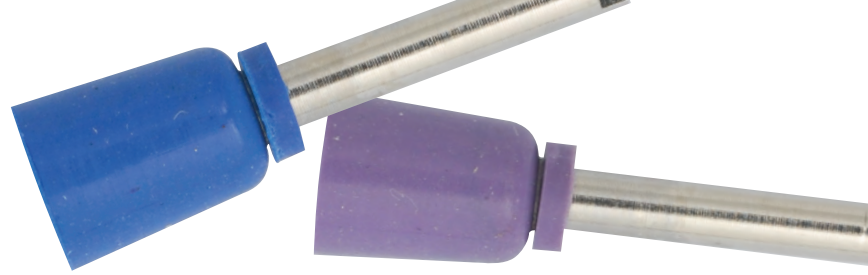
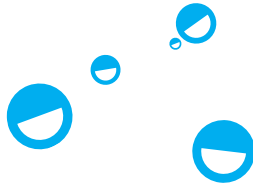
PRC521



Prophy Cups Snap-On

Latex Free. Single-Use.
Box 36.

PRC412



Rubber Cups Snap-on Soft

Pink. Latex Free. Vibration-free. Autoclavable. Made from synthetic elastomer (polymer). Single-Use. Box 36.

PRC510



Nylon Brushes Junior Cup Screw-in

Vibration-free. White nylon. Autoclavable. Single-Use. Box 50.

PRN030



Nylon Brushes Junior Cup RA

Latch Type. Vibration-free. White nylon. Autoclavable. Single-Use. Box 50.

PRN010



Bristle Brushes Junior Cup 31A Screw-in

Vibration-free. Autoclavable. Single-use. Box 36.

PRB410



Bristle Brushes Junior Cup RA

Latex Free. Single-Use. Box 144.

PRB106



Rubber Cups Snap-on Medium

Purple. Latex Free. Autoclavable. Made from synthetic elastomer (polymer). Single-Use. Box 36.

PRC511



Rubber Cups Snap-on Hard

Blue. Latex Free. Autoclavable. Made from synthetic elastomer (polymer). Single-Use. Box 36.

PRC512



Nylon Brushes Junior Cup RA

Vibration-free. White nylon. Autoclavable. Single-Use. Box 150.

PRN012



Bristle Brushes Snap-on

White. Vibration-free. Autoclavable. Single-Use. Box 36.

PRB300



Bristle Brushes Junior Cup RA

Latch Type. Vibration-free. Single-Use. Box 50.

PRB110

Interdental Brushes



Mini XXX Fine

Purple. Coated Stainless steel wire. Latex-free. Pack 6.

PAU001



Mini Fine

Silver. Coated Stainless steel wire. Latex-free. Pack 6.

PAU004



Standard XX Small

Uncoated Stainless steel wire. Latex-free. Pack 6.

PAU010



Standard Small

Uncoated Stainless steel wire. Latex-free. Pack 6.

PAU012



Standard Large

Uncoated Stainless steel wire. Latex-free. Pack 6.

PAU014



Mini XX Fine

Blue. Coated Stainless steel wire. Latex-free. Pack 6.

PAU002



Mini Medium

Gold. Coated Stainless steel wire. Latex-free. Pack 6.

PAU005



Standard X Small

Uncoated Stainless steel wire. Latex-free. Pack 6.

PAU011



Standard Medium

Uncoated Stainless steel wire. Latex-free. Pack 6.

PAU013



Standard X Large

Uncoated Stainless steel wire. Latex-free. Pack 6.

PAU015



Premier XXX Small

Gold. Stainless steel wire.
Latex-free. Pack 6.

PAU019



Premier X Small

Bronze. Stainless steel wire.
Latex-free. Pack 6.

PAU021



Standard Large

Silver. Stainless steel wire.
Latex-free. Pack 6.

PAU023



Premier XX Small

Blue. Stainless steel wire.
Latex-free. Pack 6.

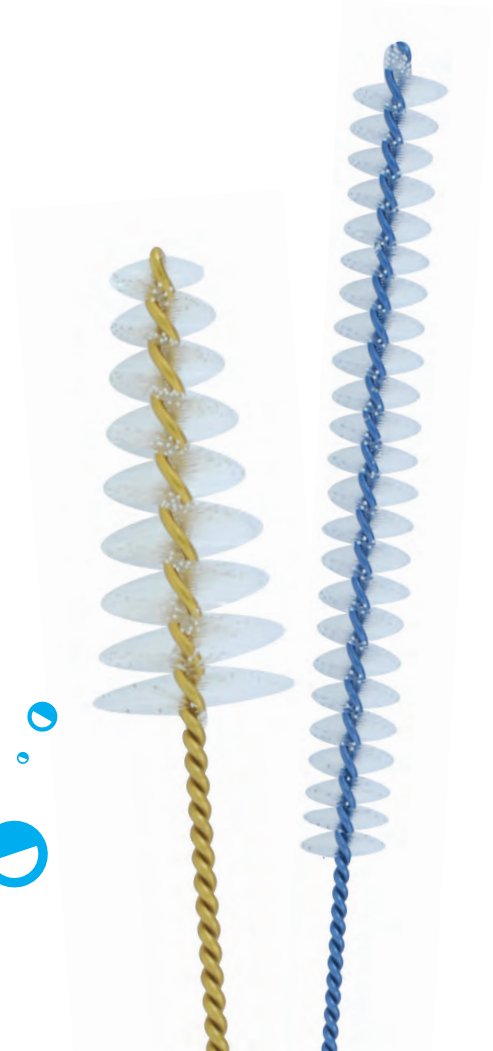
PAU020



Premier Medium

Gold. Stainless steel wire.
Latex-free. Pack 6.

PAU022



Brushes



Interdental Brush Handle

For use with UnoDent Mini

Interdental Brushes.

Latex-free. Each.

PAU000



Toothbrushes

Medium bristles. Tongue Cleaner.

Assorted colours. 2 of each colour:

Blue, Green, Grey, Yellow, Pink and Purple.

PAU100



Sealants & Accessories



Unolux Seal

Light-curing composite for sealing fissures. Shade: transparent. 2 x 3ml.

PSU010



DE-SEN LC Kit

A light-curing, fluoride-releasing one-component preparation for the treatment of dentine hypersensitivity. 1 x 4.5ml Bottle, 1 Handle and 50 Application Tips.

PFU000



Mandrel - RA for Snap-On Cups / Brushes

Autoclavable. 1 mandrel.

BYS000



Unolux Seal F Kit

Light-curing composite for sealing fissures. 2 x 2ml syringes, white with fluoride and 20 intra-oral tips.

PSU020



Unolux Seal F Intra-oral Tips

Pack 100.

PSX001





Burs

[Click the product codes to view more information](#)

Sterile Diamond Burs

Individually Packed Diamond Burs

Box 25.

Cylinder
FG



541	542	607	730	745
BES541	BES542	BES607	BES730	BES745

Medium
Grit

Round End
Tapered FG



639	640	710	714
BES639	BES642	BES710	BES715

Medium
Grit

Fine Grit

BES638	BES641	BES709	BES714
--------	--------	--------	--------

Extra Fine
Grit

-	BES640	-	BES713
---	--------	---	--------

Pear
FG



566

Medium
Grit

BES566

Truncated
Cone FG



556

Medium
Grit

BES556

Round
FG



520 708

Medium
Grit

BES520 BES708

Round
Collar FG



526

Medium
Grit

BES526

Flame FG



724

Medium
Grit

BES726

Fine Grit

BES725

Extra Fine
Grit

BES724

Flame
Cone FG



562

Fine
Grit

BES563







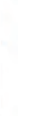




Extra Fine
Grit

BES562

Diamond Burs

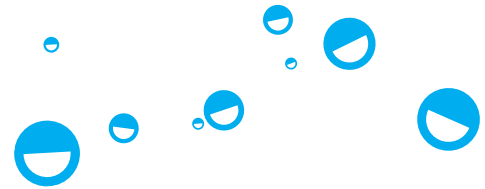
Individually Packed Diamond Burs

Non-sterile. Each.

Cylinder FG												
	541	541S	542	543	546	607	657	659	700	710	730	745
Medium Grit	BD541	BD541S	BD542	BD543	BD546	BD607	BD657	BD659	BD700	BD710	BD730	BD745
Coarse Grit	BD541C	-	BD542C	-	BD546C	-	-	-	-	-	-	BD745C
Long Shank	-	-	-	-	BD546L	-	-	-	-	-	-	-

Pear FG				
	565	566	567	569
Medium Grit	BD565	BD566	BD567	-
Coarse Grit	-	BD2342	BD2344	BD2348

Diablo FG					
	536	537	538	608	721
Medium Grit	BD536	BD537	BD538	BD608	BD721



Round FG



519 520 520S 521 522 645 708 646

Medium Grit	BD519	BD520	BD520S	BD521	BD522	BD645	BD708	-
Coarse Grit	-	-	-	BD521C	BD522C	-	-	BD001C
Fine Grit	-	-	-	-	BD522F	-	-	-
Ultra Fine Grit	-	-	-	-	BD522U	-	-	BD001S

Round with Collar FG



525 526 527

Medium Grit	BD525	BD526	BD527
-------------	-------	-------	-------

Wheel FG



512 513 514 619

Medium Grit	BD512	BD513	BD514	BD619
-------------	-------	-------	-------	-------

Round HP



101 102

Coarse Grit	BHU101	BHU102
-------------	--------	--------

Diamond Burs

Individually Packed Diamond Burs

Non-sterile. Each.

Round End Tapered FG



501 502 503 504 635 636 637 639 640 713 714

Medium Grit	BD501	BD502	BD503	BD504	BD635	BD636	BD637	BD639	BD640	BD713	BD714
Coarse Grit	-	-	-	-	-	-	BD637C	-	-	-	-
Extra Fine Grit	-	-	-	-	-	-	-	BES637	-	-	-

Truncated Cone FG



550 551 552 554 555 556 556S 557 559 560 622 623

Medium Grit	BD550	BD551	BD552	BD554	BD555	BD556	BD556S	BD557	BD559U	BD560	BD622	BD623
Coarse Grit	-	-	-	BD554C	-	BD556E	-	BD557C	-	-	-	BD623C
Fine Grit	-	-	-	-	-	BD556F	-	-	-	-	-	-
Ultra Fine Grit	-	-	-	-	-	BD556U	-	BD557U	-	-	-	-

Truncated
Cone FG



624 626 627 629 630 712

Medium
Grit

BD624 BD626 BD627 BD629 BD630 BD712

Coarse
Grit

- BD626C - - - -

Inverted
Cone FG



530 531 534 535 709

Medium
Grit

BD530 BD531 BD534 BD535 BD709

Double
Truncated
Cone FG



632

Medium
Grit

BD632

Subgingival
Flame FG



540

Medium
Grit

BD540

Flame RA



247


Medium
Grit



BGU247

Diamond Burs

Individually Packed Diamond Burs

Non-sterile. Each.

											
Flame FG	562	563	564	582	650	651	652	675	719	723	724
Medium Grit	BD562	BD563	BD564	BD582	BD650	BD651	-	BD675	BD719	BD723	BD724
Coarse Grit	-	-	-	-	-	-	-	-	-	-	-
Fine Grit	BD562F	-	-	BD582F	-	-	-	-	-	-	-
Ultra Fine Grit	BD562U	-	BD564U	BD582U	BVU650	BVU651	BVU652	-	-	-	-

										
Cylindrical Domed FG	544	545	729	731		CY1	CY2	CY3	CY4	
Medium Grit	BD544	BD545	BD729	BD731	Medium Grit	BDB001	BDB002	BDB003	BDB004	



Cylindrical
Pointed FG



561 613 615 716 290/010 290/012

Medium Grit	BD561	BD613	BD615	BD716	BD2900	BD2902
Coarse Grit	-	-	-	-	-	-
Fine Grit	BD561F	-	-	-	-	-
Ultra Fine Grit	BD561U	-	-	-	BD2901	BD2903

Conical Bulk
Reducers FG



519-018S 519-018S 521-019 513-017

Medium Grit	BDB006	BDB007	BDB008	BDB005
-------------	--------	--------	--------	--------

Tapered
Pointed FG



558 753

Medium Grit	BD558	BD753
Coarse Grit	-	-
Fine Grit	BD558F	-

Tiger
Stripe FG





0.3mm 0.5mm



Medium Grit	BDTS03	BDTS05
-------------	--------	--------








Gold Diamond Burs



Individually Packed Diamond Burs

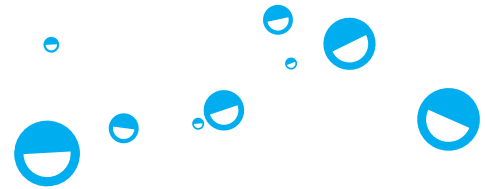
Non-sterile. Each.

Round FG							
	001/010	001/012	001/014	001/016	001/018	001/021	001/023
Medium Grit	BJM051	BJM052	BJM053	BJM054	BJM055	BJM056	BJM057
Coarse Grit	-	-	-	-	-	-	BJM058
Fine Grit	-	-	-	-	BJM059	-	-
Extra Fine Grit	-	-	-	-	BJM061	-	-
Ultra Fine Grit	-	-	-	-	BJM063	-	-

Round with Collar FG		
	002/012	002/017
Medium Grit	BJM070	BJM071

Cylinder FG							
	108/009	109/010	109/012	109/015	110/014	111/012	111/014
Medium Grit	BJM150	BJM151	BJM152	BJM153	BJM170	BJM180	BJM181
Coarse Grit	-	-	-	BJM158	-	-	BJM186

Round End Cylinder FG		
	139/009	139/012
Medium Grit	BJM201	BJM202



**Flat End
Taper FG**



171/012 171/015 172/014 173/014 173/016 173/018

Medium Grit	BJM240	BJM241	BJM251	BJM270	BJM271	BJM272
Coarse Grit	-	BJM246	-	-	BJM277	-
Fine Grit	-	-	-	-	BJM281	-

**Inverted
Cone FG**



225/013 225/019

Medium Grit	BJM100	BJM101
-------------	--------	--------

**Round End
Taper FG**



198/014 198/017 199/014 199/016 199/018

Medium Grit	BJM363	BJM364	BJM302	BJM303	BJM304
-------------	--------	--------	--------	--------	--------

**Inverted
Cone with
collar FG**




019/012 019/017

Medium Grit	BJM091	BJM092
-------------	--------	--------

Gold Diamond Burs

Individually Packed Diamond Burs

Non-sterile. Each.

		
Flame FG	247/013	001/012
Fine Grit	BJM422	BJM437
Extra Fine Grit	BJM423	BJM440

			
Pear FG	233/016	237/012	238/012
Medium Grit	BJM132	BJM130	BJM133

		
Tapered Pointed FG	167/012	166/017
Medium Grit	BJM400	BJM402
Coarse Grit	-	-
Fine Grit	BJM405	-
Ultra Fine Grit	BJM409	-

		
Football FG	257/020	130/012
Fine Grit	BJM006	BJM583
Extra Fine Grit	BJM009	
Ultra Fine Grit	BJM012	



Twister Diamond Burs

Individually Packed Diamond Burs

Non-sterile. Each.



Twister FG

	257/023	197/020	198/015	198/016	198/020	199/016
Coarse Grit	BDT025	BDT000	BDT005	BDT010	BDT015	BDT020
Extra Coarse Grit	BDT055	BDT030	BDT035	BDT040	BDT045	BDT050



Gold Twister FG

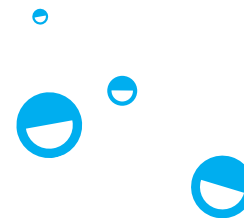
	257/023	197/020	198/015	198/016	198/020	199/016
Coarse Grit	BDT085	BDT060	BDT065	-	BDT075	BDT080
Extra Coarse Grit	BDT115	BDT090	BDT095	BDT100	BDT105	BDT110

Twister Kit

12 burs – 6 shapes, each in both coarse and extra coarse.
 Contains: 257/023, 197/020, 198/015, 198/016, 198/020, 199/016.
BDT200

Gold Twister Kit

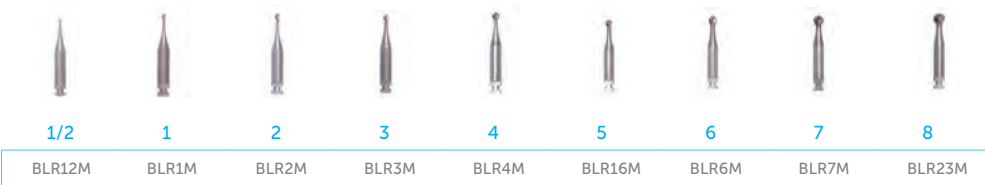
12 burs – 6 shapes, each in both coarse and extra coarse.
 Contains: 257/023, 197/020, 198/015, 198/016, 198/020, 199/016.
BDT300



Steel Burs

Non-sterile. Pack 6.

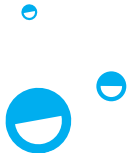
Round
Miniature
Head RA



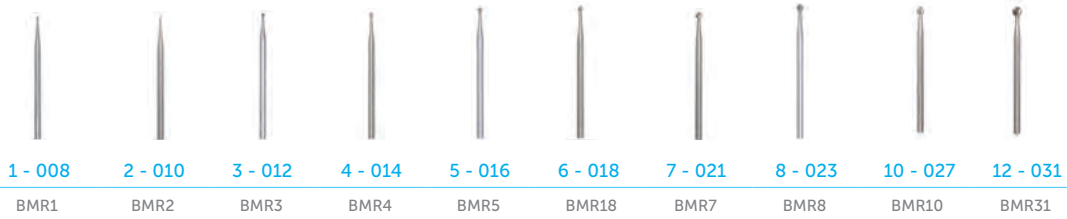
Round RA



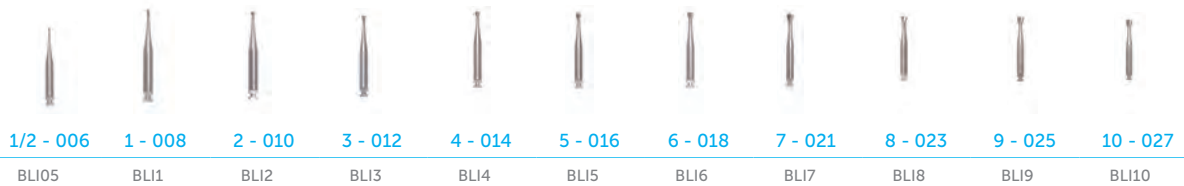
Round RA



Round HP



Inverted
Cone RA



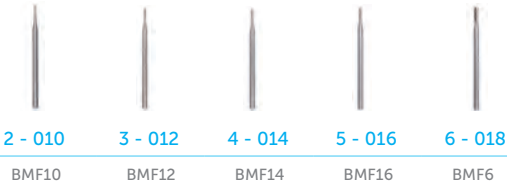
Tapered
Fissure RA
Cross Cut



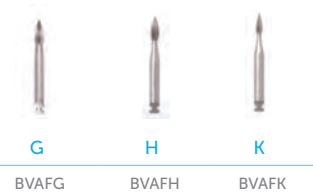
Steel Burs

Non-sterile. Pack 6.

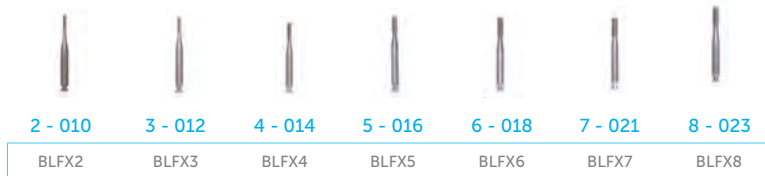
Flat
Fissure HP



Finishing
Burs Flame
RA



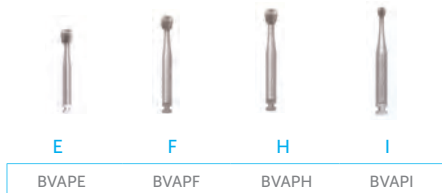
Flat Fissure
RA Cross
Cut



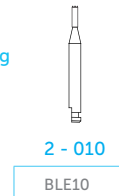
Round
RA



Finishing
Burs Pear
RA

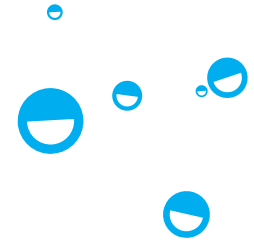


End Cutting
RA

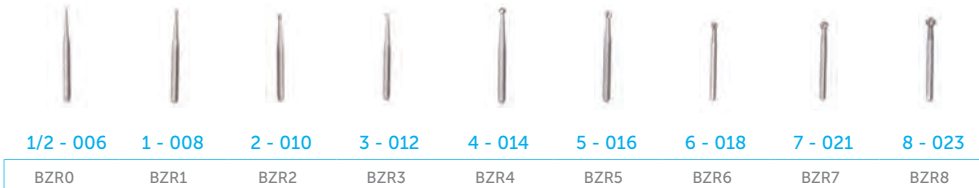


Tungsten Carbide Burs

Non-sterile.



Round FG
Plain Cut



Round RA
Plain Cut



Inverted
Cone FG
Plain Cut



Inverted
Cone RA
Plain Cut



Tungsten Carbide Burs

Non-sterile.

Pear
Amalgam FG
Plain Cut



330 - 008 331 - 010 332 - 012
BZ330 BZ331 BZ332

End
Cutting FG



2 - 010 3 - 012
BZE2 BZE3

Flat Fissure
HP Cross Cut



557 - 010
BZB557

Flat Fissure FG
Plain Cut



56 - 009 57 - 010 58 - 012
BZ056 BZ057 BZ058

Flat Fissure FG
Cross Cut



556 - 009 557 - 010 558 - 012
BZFX1 BZFX2 BZFX3

Flat Fissure RA
Cross Cut



557 - 010 558 - 012
BZA557 BZA558

Finishing
Burs



018 Round 014 Flame 014 Bullet 014 T/Fissure 010 Needle
BZBR6 BZAF4 BZAB4 BZAT4 BZAN2

Taper Fissure
FG Plain Cut



170 - 010 170L - 012

BZ170 BZ170L

Taper Fissure
FG Plain Cut



170 - 012 702 - 016

BZB701 BZB702

Dome Fissure
FG Plain Cut



1157 - 010 1158 - 012

BZ1157 BZ1158

Taper Fissure
FG Cross Cut



701 - 012 702 - 016 703 - 021

BZ701 BZ702 BZ703

Straight
Fissure FG
Fine Cross
Cut - Flat



2057 - 010

BZ2057

Dome Fissure
FG Cross Cut



1157 - 010 1158 - 012

BZ1157 BZ1158

Taper Fissure
FG Cross Cut



700 - 010 701 - 012 702 - 016

BZA700 BZA701 BZA702

Straight
Fissure FG
Fine Cross
Cut - Dome



1958 - 012

BZ1958

Tungsten Carbide Burs

WildCat Burs

Non-sterile. Pack 5.

FG Plain Cut



3 - 012 1157 - 010 1158 - 012 330 - 008 331 - 010 332 - 012 57 - 010

Shape

Round	Dome F	Dome F	Pear Am	Pear Am	Pear Am	Flat F
BWR3	BW1157	BW1158	BW330	BW331	BW332	BW057

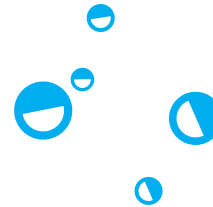
FG Cross Cut



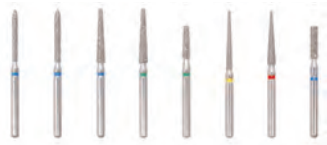
1157 - 010 1158 - 012 557 - 010 558 - 012 2057 - 010 1958 - 012

Shape

Dome F	Dome F	Flat F	Flat F	Flat	Dome
BW1557	BW1558	BWFX2	BWFX3	BW2057	BW1958



Bur Kits



Crown Preparation Kit

8 diamond burs for bevelling margins, shoulder preparation, bulk reduction, molar and premolar preparation, interproximal finishing, final finishing and crown preparation.

Contains: 290/010, 290/012, 556, 556C, 554C, 557U/F, 558F, 546.

BD001



Cavity Preparation Kit

8 diamond burs used for small penetration, cavity preparation, undercutting and extension of cavity. Contains: 520, 527, 531, 567, 541, 541C, 542, 537.

BD004



Composite & Porcelain Finishing Kit

10 ultrafine diamond burs specifically for trimming and finishing composite material, crown preparation finishing, and porcelain veneer after cementation trimming.

Contains: 290/010, 290/012, 556, 556C, 554C, 557U/F, 558F, 546.

BD006



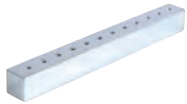
Laminate Veneer Kit

10 diamond burs including 'Tiger Stripes' which cut to a depth of 0.3mm or 0.5mm, diamonds to clean off stripes and luting cement, and ultrafine finishers for complete aesthetics.

Contains: Tiger Stripes (0.3mm & 0.5mm), 290/010, 290/010U/F, 556, 546 Long, 557U/F, 561U/F, 290/012, .290/012U/F.

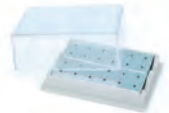
BD008

Bur Holders



12 Hole - Chrome Plated

Each.
 FG BXS020
 RA BXS025



24 Hole - Chrome Plated Inserts

Autoclavable at 121°C (except lids). Each.
 FG BXS090
 RA BXS091
 HP BXS092
 FG/RA BXS093



24 Hole - Aluminium

Blue, Red or Yellow. Each.
 FG BXS065, BXS070, BXS075
 RA BXS066, BXS071, BXS076
 HP BXS067, BXS072, BXS077
 FG/RA BXS068, BXS073, BXS078



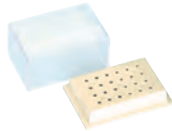
48 Hole - Plastic Stand

Polypropylene. Autoclavable up to 134°C. Each.
 Small BXS203



12 Hole - Plastic

With Lid. Autoclavable to 134°C (except lids). Each.
 FG BXS055
 RA BXS056
 HP BXS057
 FG/RA BXS058



24 Hole - Plastic

With Lid. Autoclavable to 134°C (except lids). Each.
 FG BXS060
 RA BXS061
 HP BXS062
 FG/RA BXS063



43 Hole - Magnetic Bur Holder

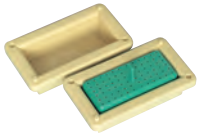
Non autoclavable. Blue, White or Red. Each.
 BXS040, BXS041, BXS042



72 Hole - Plastic Stand

Polypropylene. Autoclavable up to 134°C. Each.
 FG BXS205
 RA BXS206

Bur Brushes



72 Hole - Plastic

Polypropylene. Autoclavable up to 134°C. Each.

FG BXS201
RA BXS202



Metal Etched Stand

Autoclavable. Aluminium. Each.

BXU001



Pencil Type - Disposable

Non Autoclavable. Each.

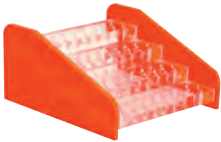
BXB007



Pencil Type - Autoclavable

Autoclavable. Each.

BXB008



112 Hole - Plexiglass

Not Autoclavable. Each.

FG BXS198



Bur Disinfecting Box

White plastic. Each.

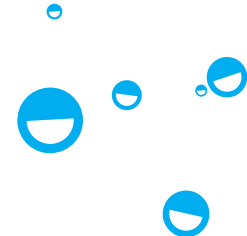
BXU010



Brush Type - Disposable

Non Autoclavable. Each.

BXB009





Restoratives

[Click the product codes to view more information](#)

Excavators



121/122 DE

Octagonal handle. Each.
DEN154



125/126 DE

Round or Octagonal handle. Each.
DEN110, DEN150, DEN156



129/130 DE

Round or Octagonal handle. Each.
DEN113, DEN152, DEN158



123/124 DE

Octagonal handle. Each.
DEN108, DEN155



127/128 DE

Round or Octagonal handle. Each.
DEN111, DEN151, DEN157

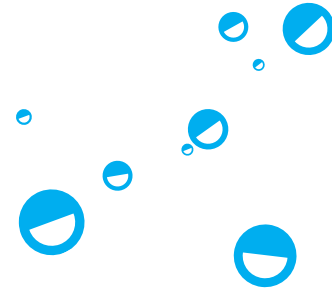


131/132 DE

Round or Octagonal handle. Each.
DEN114, DEN153, DEN159



Excavators



133/134 DE

Octagonal handle. Each.

DEN160



153/154 DE

Octagonal handle. Each.

DEN116, DEN161



157/158 DE

Octagonal handle. Each.

DEN122



145/146 DE

Octagonal handle. Each.

DEN115



155/156 DE

Octagonal handle. Each.

DEN119



159/160 DE

Octagonal handle. Each.

DEN123



125/126 - Single use

Pack 10.

DIE125

Plastic Filling Instruments



1 Flat Plastic DE

Octagonal handle. Each.
DPF101, DPF361



6 Flat Plastic DE

Round or Octagonal handle. Each.
DPF106, DPF360



49 Flat Plastic DE

Octagonal handle. Each.
DPF125, DPF352, DPF363



178 Flat Plastic DE

Octagonal handle. Each.
DPF368



153 Plugger DE

Octagonal handle. Each.
DPF130, DPF364



2 Flat Plastic DE

Octagonal handle. Each.
DPF370



18 Flat Plastic DE

Octagonal handle. Each.
DPF362



156 Flat Plastic DE

Round or Octagonal handle. Each.
DPF136, DPF356, DPF367



179 Flat Plastic DE

Round or Octagonal handle. Each.
DPF160, DPF358, DPF369



154 Plugger DE

Octagonal handle. Each.
DPF132, DPF365

Plastic Filling Instruments



1L Burnisher DE

Round or Octagonal handle. Each.

DBU110, DBU151, DBU161



18 Burnisher DE

Round or Octagonal handle. Each.

DPF118, DPF350



2 Burnisher Thymozin SE

Octagonal handle. Each.

DPF192



PF10 Burnisher DE

Octagonal handle. Each.

DPF110



1/2 Blacks Amalgam Plugger

Octagonal handle. Each.

DPL112, DPL121



1 Burnisher DE

Round or Octagonal handle. Each.

DBU105, DBU150, DBU160



155 Burnisher DE

Round or Octagonal handle. Each.

DPF134, DPF354, DPF366



3 Burnisher Thymozin SE

Octagonal handle. Each.

DPF193



0/1 Blacks Amalgam Plugger

Octagonal handle. Each.

DPL111, DPL120



PFI-6 - Single use

Pack 10.

DIP106



155 Burnisher Single use

Pack 10.

DIP155



**154 Plugger -
Single use**

Pack 10.

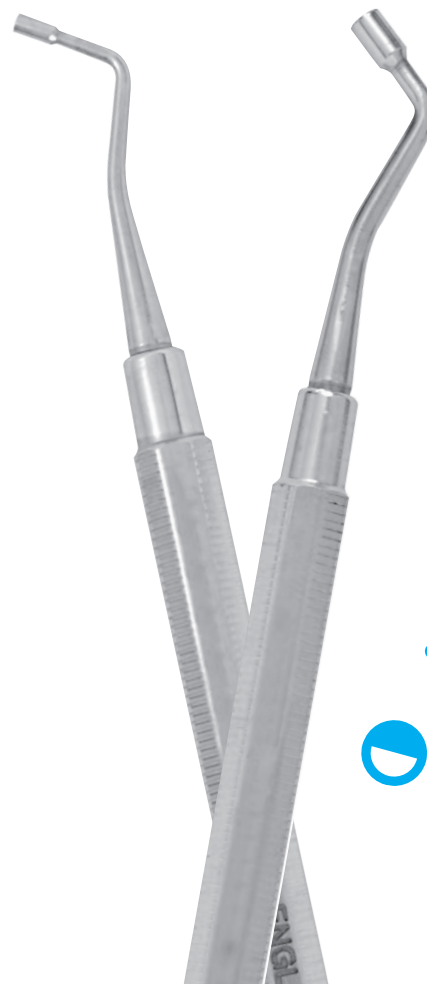
DIP154



**PFI-156 Plugger -
Single use**

Pack 10.

DIP156



Composite Instruments



1/2 Blacks Amalgam Plugger

Silicone handle. Each.

DPL114



1L Burnisher DE

Silicone handle. Each.

DBU111



6 Plastic DE

Silicone handle. Each.

DPF107



155 Plastic DE

Silicone handle. Each.

DPF135



179 Plastic DE

Silicone handle. Each.

DPF161



1 Burnisher DE

Silicone handle. Each.

DBU106



1 Plastic DE

Silicone handle. Each.

DPF102



49 Plastic DE

Silicone handle. Each.

DPF126



178 Plastic DE

Silicone handle. Each.

DPF159



Plastic Assortment

Pack 5.

DCO600

Carvers



Le Cron's DE

Round handle. Each.
DCC150



2 Wards DE

Octagonal or Round
Handle. Each.
DCC185, DCC192, DCC194



3-1/2 Hollenbach DE

Octagonal or Round
Handle. Each.
DCC130, DCC196, DCC208



2 Wards DE

Single use. Pack 10.
DIC102



1 Wards DE

Round or Octagonal
handle. Each.
DCC180, DCC191, DCC193



3 Hollenbach DE

Octagonal or Round Handle.
Each.
DCC125, DCC195, DCC207



4 Osteo-Mitchell DE

Octagonal or Round Handle.
Each.
DCC170, DCC198, DCC197



Bonds & Accessories



Unolux Mono Bond Kit

Light-curing single component adhesive for enamel. Requires no mixing. 3 x 3ml and accessories.

FBD086



Best Seller

UnoBond 5

5th Generation Bonding Adhesive Light-Curing Bonding Adhesive. 3ml or 5ml.

FBD800, FBD801



40% Etchant Gel

Aqueous Phosphoric Acid. 5ml Syringe.

FBG800



Etch Gel Syringe Kit

Blue etching gel. 37% Phosphoric acid gel. Thixotropic. 12g syringe and 20 Syringe Tips.

FBG700



Bond Application Set

1 Holder & 100 Clear Brushes.

FBX005



Unolux Dual Bond Resin

Dual-cure universal bond for enamel and dentine. Consists of a resin and liquid which are mixed together. Light-cures in 30 seconds/self cures in 5 minutes. 3 x 3ml.

FBD082



UnoBond 6

6th Generation Bonding Adhesive. A two-step light curable bonding system consisting of a primer and bonding agent. 2 x 5ml.

FBD810



UnoBond 7

7th Generation Bonding Adhesive Light-Cure Self-Etching Dental Adhesive. A one step self-etching bonding agent. 6ml.

FBD820



Bond Brushes

Clear or Red. Pack 100.

FBX003, FBX004



Disposable Micro Applicator Brushes

Fine - Mauve or Yellow.
Regular - Blue, Green,
Orange or Purple. Pack 400.
FBX201 - FBX206



Dappens Pot - Glass

Clear. Autoclavable to
121 °C. Each.
YMD009



Dappens Pots - Flexible

Eves Type. Small.
Autoclavable to 200 °C.
Set of 3.
YMD035



Code Rings

Medical grade silicone.
Autoclavable. Latex free.
4mm
Assorted Colours. Box 400.
GIX110



Bottle Clips

For Hand Disinfectant Rub.
Pack 6.
GXC255



Bendable Applicator Brushes

Flexible heads. Contains
72 red brushes and 72
blue brushes - 144 total.
Single use.
FBX011



Disposable Dappen Dishes

White or Assorted Colours
Pack 200.
YMD050, YMD055



Mouth Prop

Silicone rubber. Latex-free.
Each with safety chain.
Small Yellow, Medium Blue,
Orange Large or Assorted.
SRU010 - SRU040

Blue, Brown, Green, Grey,
Orange, White, Yellow,
Black or Red. Box 50.
GIX115 - GIX155

6mm

Light Blue, Green, White,
Black, Yellow, Red or
Orange. Box 50.
GIX160 - GIX190



Mixing Pads



Poly Mixing Pads

Thickness 1.1 mm 100 sheets per pad. Single use.
5cm x 5cm.

CTM101

8cm x 8cm.

CTM102

14cm x 8cm.

CTM103

(Bayer type). For impression materials, etc.

Large 20.4 x 15.3cm

CTB015



Non-Slip Mixing Pad

12.5cm x 18cm
25 sheets per pad
CTC051

7cm x 9.5cm

60 sheets per pad

CTM051

7.5cm x 7.5cm

60 sheets per pad

CTP011

15cm x 24cm

35 sheets per pad

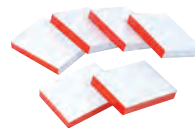
CTM052



Poly Mixing Pad Impregum Type

27 sheets per pad. Single use.
19 x 12.5cm.

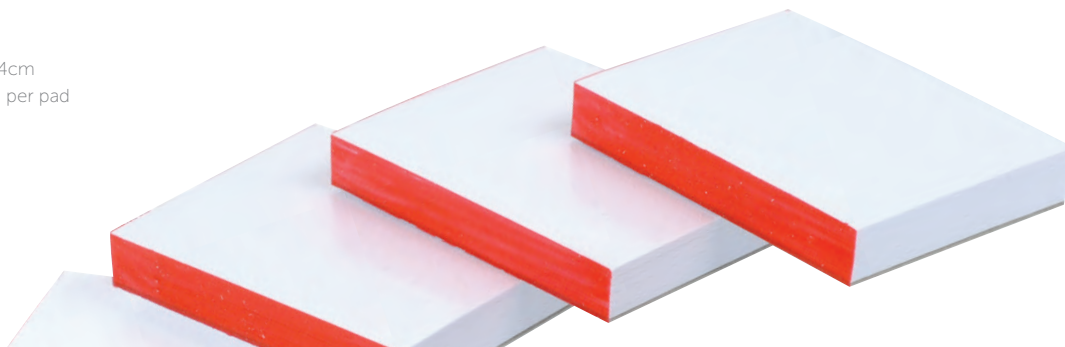
CTC050



Mixing Pads for Dycal, Life

3.5cm x 4.5cm
40 sheets per pad

CTD021



Flowables



Nano-Ceramic Flow

A flowable, light-curing filling material suitable for anterior and posterior teeth based on Nano-Ceramic fillers. A1, A2, A3 or A3.5 Syringes. 1.8g.

FLU421 - FLU424



Unolux BCS Flow

Flowable, light-curing radiopaque glass-ceramic micro-hybrid composite for anterior and posterior teeth. A2, A3 or A3.5 Syringe. 3g.

FLU710, FLU711, FLU712



Unolux BCS Flow Intra-oral Tips

Also suitable for UnoDent Nano-Ceramic LC Flow. Pack 100.

FLU723



Luminos HF

Flowable Light Cure Restorative Composite. Syringes. A1, A2, A3, A3.5, A4, B1, B2, B3, C2, BW, A2O, A3O. 2g.

FLU860 - FLU866



Luminos ZF

Zero Flow Composite Flowable Injectable Hybrid Restorative Material. Syringes. A1, A2, A3, A3.5, A4, B2, A1O, A2O, INC. 2g.

FLU870 - FLU878



Composites & Compomers



Luminos UN

Universal Light-Cure Restorative Composite. Advanced fluoride-containing nano hybrid composite.

Capsules. A1, A2, A3, A3.5, A4, B1, B2, B3, C2, BW, A2O, A3O, INC. 20 x 0.25g.

FLU830 - FLU840

Syringes. A1, A2, A3, A3.5, A4, B1, B2, B3, C2, BW, A2O, A3O. 4g.

FLU810 - FLU820, FLU841



Nano-Ceramic LC Syringes

Light-curing filling material based on Nano-Ceramic fillers.

A2 Syringes. 4g.

FLU402

A3 Syringes. 4g.

FLU403

A3.5 Syringes. 4g.

FLU404



Nano-Ceramic LC Capsules

Light-curing filling material based on Nano-Ceramic fillers.

A2 Capsules. 20 x 0.25g.

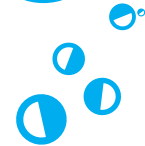
FLU412

A3 Capsules. 20 x 0.25g.

FLU413



Best Seller





Compomer LC Capsules

Universal light-curing compomer restorative material for filling cavities in both anterior and posterior areas.

A2, A3, A3.5. 20 x 0.25g.
FGC002, FGC004, FGC006



Unolux BCS Syringes

Light-curing glass-ceramic micro-hybrid composite for all cavity classes.

Syringe Kit. 7 x 4g syringes 1 of each shade: A2, A3, A3.5, B2, B3, C2 and UO.
FLU650

Syringes.
A1, A2, A3, A3.5, B2, B3, C2, UO. 4g.
FLU660, FLU661, FLU662, FLU663, FLU665, FLU666, FLU667, FLU669



Unolux BCS Capsules

Light-curing glass-ceramic micro-hybrid composite for all cavity classes.

Capsule Kit. 40 x 0.25g capsules (10 of each A2, A3 & A3.5, 5 of each B2 & B3).
FLU680

Capsules
A1, A2, A3, A3.5, B2 & B3.
25 x 0.25g.
FLU690, FLU691, FLU692, FLU693, FLU695, FLU696



Why you love UnoDent

"We have used UnoDent products across our practices for a number of years. Their composite in particular are good quality and we use them exclusively."

Mr Piyush Patel,
BDS MFDSRCPS(Glas)

Bulk Fill Composites



Luminos BN

Bulk Fill Nano Hybrid Composite Advanced fluoride-containing nano hybrid composite.

Syringes. Universal, A. 4g.

FLU850, FLU851



Luminos BF

Bulk Fill Flowable Composite Advanced fluoride-containing flowable composite.

Syringes. Universal, Dentine. 2g.

FLU880, FLU881



Composite Accessories



Composite Compu Gun Blue

Autoclavable to 134°C.
FAX661



Composite Compu Gun Purple

Autoclavable to 134°C
FAX662



Composite Brush Kit

6 Handles & 400 Brushes.
FBX000



Composite Spatula

Bag 100.
DSP512



Composite Compu Gun Light Grey

Autoclavable to 134°C.
FAX660



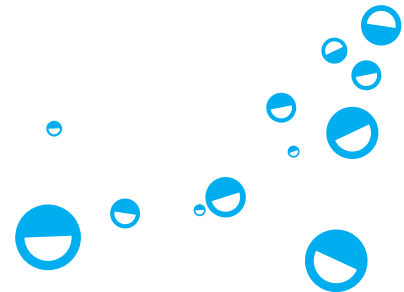
Unolux BCS Shade Guide

For colour matching teeth
with restoration material.
FXS002



Composite Spatula - Disposable

Pack 10.
DSP520, DSP522



Glass Ionomers & Temporary Cements



Aesthetic Restorative

A fast setting, high strength glass ionomer restorative with excellent aesthetics.

Powder/Liquid Kit

15g Powder and 6ml Liquid.

FGU002

Powder

A2 - 15g FGU004

A3 - 15g FGU006

A3.5 - 15g FGU008

Liquid

6ml FGU012



Aqua-Fil Introductory Kit

A fast-setting glass ionomer restorative activated by mixing with water.

Anterior Introductory Kit

1x 10g No.2 - Light Yellow.

1 x 10g No.3 - Universal.

1 x 10g No.4 - Light Grey.

1 x 10g No.5 - Yellow Brown

1 x 10g No.7 - Yellow Grey

1 x 10ml Tooth Cleanser.

Water Dispensing Bottle.

Powder Scoop. Shade Guide.

FGF601



Aqua-Fil - 10g Bottle

A fast-setting glass ionomer restorative activated by mixing with water. Adheres directly to enamel, dentine, cementum and set amalgam. 10g Bottle

No.4 - Light Grey FGF648

No.5 - Yellow Brown FGF660

No.7 - Yellow Grey FGF662

No.8 - Brown FGF666



Aqua-Fil Tooth Cleanser

Removes the salivary pellicle or smear layer on uncut or contaminated tooth surfaces prior to placing a glass ionomer restorative. 10ml.

FGF670



Aqua-Silver

Silver reinforced glass ionomer. Easy to mix, activated by mixing with water. 10g.

FGF610





Temporary Luting Cement

A single paste temporary luting cement. For fixing temporary dental crowns or bridges. 3 x 2.8g syringe, 9 x tips.

TNU015



3 DE Cement Spatula

Autoclavable. Each.

DSP113, DSP115



Cavity Temporary Cement

Ready to use, rapid setting temporary filling material.

Tubes 4 x 8g. TEB004

Pot 30g. TEB006



8 DE Cement Spatula

Autoclavable. Each.

DSP114, DSP116



Poly-Cem-A Complete Kit

Water mix version of Poly-Cem. Adhesive to enamel, dentine and non-precious metals. Minimal pulpal reaction. Easy to mix/use. Radiopaque releases fluoride.

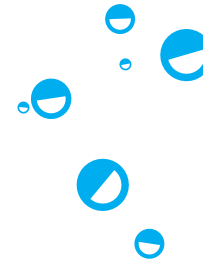
LAU000



8 DE Cement Spatula - Single Use.

Each.

DIS000, DIS005



Articulating Paper



Articulation Paper Thin

Blue/Blue. 0.00125 in / 71 Microns. 12 x 12 sheets.

ITU001



Articulation Paper Thick

0.005 in / 127 Microns. 12 x 12 sheets.

ITU002



Ready Foil

Blue. 8 microns. Pack 100 or 500.

ITU011, ITU010

Red. 8 microns. Pack 100 or 500.

ITU013, ITU012



Articulation Paper Combi

Red/Blue. 0.0028 in / 71 Microns. 12 x 12 sheets.

ITU003



Articulation Paper Horseshoe

Red/Blue. 0.0035 in / 89 Microns. 6 x 12 sheets.

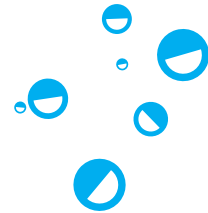
ITU004



Forspex

Autoclavable Miller. Each.

DFO219



Amalgam



Unoloy 44.4

High Copper Non-Gamma Two, Zinc-Free. A mixture of irregular (atomised) and lathe cut particles. Contains: 44.5% Silver, 25.5% Copper, 30% Tin. 500 Caps.

1 Spill - Regular	FAF170
2 Spill - Regular	FAF171
3 Spill - Regular	FAF172



Unoloy 44.5

High Copper Non-Gamma Two, Zinc-Free. A mixture of irregular (atomised) and lathe cut particles. Contains: 44.5% Silver, 25.5% Copper, 30% Tin. 50 Caps.

1 Spill - Regular	FAF150
2 Spill - Regular	FAF151
3 Spill - Regular	FAF152

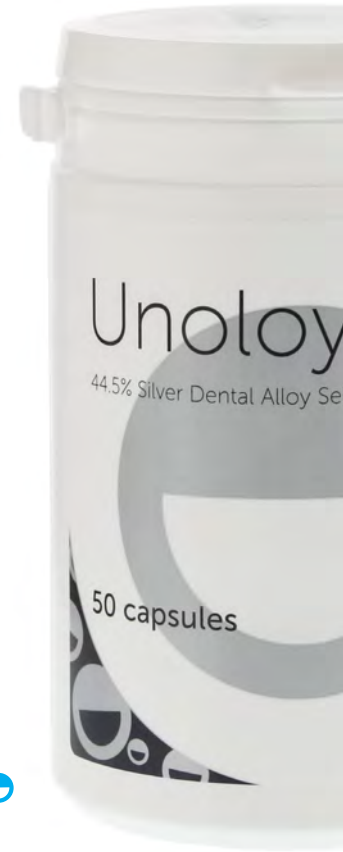


Unoloy LM80

Reduced mercury dental alloy capsules. Liquid atomised with liquid irregular (atomised) shaped particles. Contains: 40% Silver, 29% Copper, 31% Tin. 50 Caps.

1 Spill - Regular	FAF190
2 Spill - Regular	FAF191
3 Spill - Regular	FAF192

1 Spill - Fast	FAF195
2 Spill - Fast	FAF196
3 Spill - Fast	FAF197



Amalgam Carriers



Curved Plastic RA

Autoclavable to 134°C. Each.

FAX350



Amalgam Gun Spring

Autoclavable to 134°C. Each.

FAX380



Curved Plastic RA Tips

Autoclavable to 134°C.

Each.

FAX360



Straight - Single use

Pack 10.

FAX460



Amalgam Carrier Straight

Autoclavable. Each.

FAX600



Straight Plastic

Autoclavable to 134°C. Each.

FAX355



Stainless Steel Carrier

Reg/Large or Reg/Jumbo.

Autoclavable. Each.

FAX390, FAX395



Metal Gun 10a Type

Each.

FAX401



RA Single-use

Pack 10.

FAX465



Amalgam Carrier Nozzles - Straight

Autoclavable. Each.

FAX601



Amalgam Carrier 45°

Autoclavable. Each.

FAX610



Amalgam Carrier 90°

Autoclavable. Each.

FAX620



Amalgam Carrier Nozzles - 45°

Autoclavable. Each.

FAX611



Amalgam Carrier Nozzles - 90°

Autoclavable. Each.

FAX621



Amalgam Well

Light Grey, Blue or Purple

FAX650 - FAX652



Retrograde Amalgam Gun RA

Each.

FAX001





Matrix

[Click the product codes to view more information](#)

Matrix Bands & Retainers



Siqueland Bands

Narrow or Wide. Stainless Steel. Pack 12.

MPS110, MPS115



Siqueland Retainers

Narrow or Wide. Stainless Steel. Each.

MPS105 - MPS108



Sectional Matrix System - Matrices Refills, 3.5mm

Pack of 50.

MPU003



Sectional Matrix System - Matrices Refills, 4.5mm

Pack of 50.

MPU004



Sectional Matrix System - Matrices Refills, 5.5mm

Pack of 50.

MPU005



Siqueland Band - Bulk Packs

Narrow or Wide. Stainless Steel. Pack 200.

MPS200, MPS205



Tofflemire Retainers

Universal. Stainless Steel. Each.

MPT100



Sectional Matrix System - Matrices Refills, 6.5mm

Pack of 50.

MPU006



Sectional Matrix System - Ring Refill, Narrow

Pack of 2.

MPU001



Sectional Matrix System - Rings Refill, Universal

Pack of 2.

MPU002



Tofflemire

Thin (.002"). Available in Adult (1,2,3) or Child (13,14,15)

Ultra Thin (.0015").

Available in Adult (1,2,3) or Child (13,14)

MPT120 - MPT142



Sectional Matrix System - Starter Kit

The system includes a molar and premolar ring, four different size matrix bands, and three wedge sizes.

MPU000



Sectional Matrix System - Wedge Refills, Small

Pack of 100.

MPU007



Sectional Matrix System - Wedge Refills, Medium

Pack of 100.

MPU008



Sectional Matrix System - Wedge Refills, Large

Pack of 100.

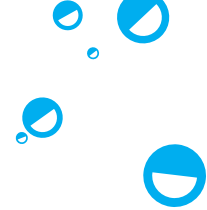
MPU009



Polishing

[Click the product codes to view more information](#)

Polishing



Bullet Smoother – Medium

Light Blue. Pack 6.

KUD106



Bullet Trimmer – Coarse

Dark Blue. Pack 6.

KUD110



Point Silicone Smoother – Medium

Light Blue. Pack 6.

KUD104



Point Trimmer – Coarse

Dark Blue. Pack 6.

KUD108



Silicone Cone Polishes

Grey. Medium grit. Pack 6.

KUO004



Bullet Polisher - Fine cut

Yellow. Pack 6.

KUO003



Silicone Flame Polisher - Medium

Grey. Pack 6.

KUO005



Point Polisher

Yellow. Pack 6.

KUD112



Silicone Polishes

Yellow, Grey Pack 6.

KUD102, KUD100



Silicone Polishing Wheel Coarse

Pack 12.

KUO002

Polishing



Bullet Trimmer TC

Standard, Super Coarse, Round End Super Fine. Each.

KUO006 - KUO008



Acrylic Polishing HP Kit

2 smoothers (light blue), 2 trimmers (blue) & 2 polishers (yellow).

KUD005



Diamond Polishing Paste

A polishing paste which restores ground porcelain, composite and tooth surfaces to a high polish in minutes.

Triple Pack

2g of each Extra Fine, Fine and Regular.

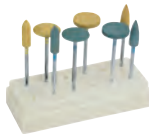
KWD005



Soft Relining Polishing Kit

10 Grinding discs, 1 mandrel & 1 TC Cutter Soft

KUD010



HP Ceramic Kit

4 wheels & 4 points.

KUL000

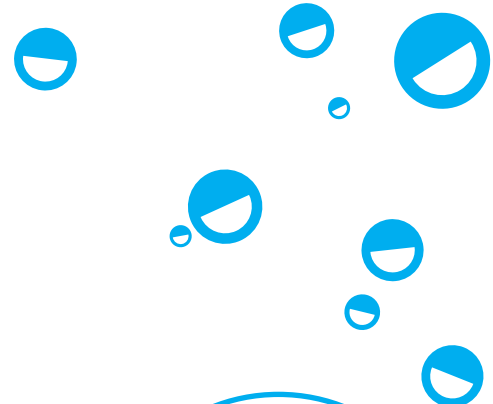
2g Refills

Extra Fine, Fine or Regular.

KWD010 - KWD020



Mandrels



302 Latch RA
Each.
BYD302



303 HP
Each.
BYD303



334 RA Moore Latch
Each.
BYM010



305 Moore HP
Each.
BYM020

Why you love
UnoDent
"Their tools give a high end finish"



Endodontics

[Click the product codes to view more information](#)

Rubber Dams and Accessories



Latex Rubber Dam Squares Thin

Latex. 6" x 6". Thin, Medium, Heavy or Extra Heavy.

EWS005, EWS020



Rubber Dam Template

Stainless steel. For 6" x 6" rubber dam.

EWC950



Rubber Dam Forceps - Stokes

Autoclavable.

EWF010



Rubber Dam Forceps - Brewer Type

Autoclavable.

EWF250



Rubber Dam Frame Youngs - Metal

Autoclavable.

EWR010



Non-Latex Rubber Dam Squares

Non-Latex. Heavy or Medium.

EWS045, EWS025



Rubber Dam Clamp Sterilising Tray

Storage system during cleaning and sterilisation.

EWC951



Rubber Dam Forceps - Hygienic

Autoclavable.

EWF015



Rubber Dam Punch Ainsworth

Autoclavable.

EWP010



Rubber Dam Frame Plastic U-Shape

Autoclavable.

EWR215

Rubber Dam Clamps



A

Each clamp is type-marked and individually boxed. Fully Autoclavable.

EWC900



AW

Each clamp is type-marked and individually boxed. Fully Autoclavable.

EWC902



BW

Each clamp is type-marked and individually boxed. Fully Autoclavable.

EWC904



DW

Each clamp is type-marked and individually boxed. Fully Autoclavable.

EWC908



EW

Each clamp is type-marked and individually boxed. Fully Autoclavable.

EWC912



G

Each clamp is type-marked and individually boxed. Fully Autoclavable.

EWC916



GW

Each clamp is type-marked and individually boxed. Fully Autoclavable.

EWC918



HW

Each clamp is type-marked and individually boxed. Fully Autoclavable.

EWC920



JW

Each clamp is type-marked and individually boxed. Fully Autoclavable.

EWC922



K

Each clamp is type-marked and individually boxed. Fully Autoclavable.

EWC924



L

Each clamp is type-marked and individually boxed. Fully Autoclavable.

EWC926



NW

Each clamp is type-marked and individually boxed. Fully Autoclavable.

EWC928



PW

Each clamp is type-marked and individually boxed. Fully Autoclavable.

EWC930



M

Each clamp is type-marked and individually boxed. Fully Autoclavable.

EWC932



C

Each clamp is type-marked and individually boxed. Fully Autoclavable.

EWC906



E

Each clamp is type-marked and individually boxed. Fully Autoclavable.

EWC910



FW

Each clamp is type-marked and individually boxed. Fully Autoclavable.

EWC914

Endodontic Hand Instruments



SS
Reamers

NiTi
Reamers

Hand K
Reamers

K
Reamers

Size	21mm	25mm	28mm	31mm	21mm	25mm	28mm	31mm	21mm	35mm	21mm	25mm
8	-	-	-	-	-	-	-	-	EMU108	EMU508	-	-
10	EGU720	EGU735	EGU750	EGU765	EGU780	EGU788	EGU796	EGU804	-	-	-	-
15	EGU721	EGU736	EGU751	EGU766	EGU781	EGU789	EGU797	EGU805	-	-	-	-
20	EGU722	EGU737	EGU752	EGU767	EGU782	EGU790	EGU798	EGU806	-	-	-	-
25	EGU723	EGU738	EGU753	EGU768	EGU783	EGU791	EGU799	EGU807	-	-	ELU125	ELU520
30	EGU724	EGU739	EGU754	EGU769	EGU784	EGU792	EGU800	EGU808	-	-	ELU130	ELU530
35	EGU725	EGU740	EGU755	EGU770	EGU785	EGU793	EGU801	EGU809	-	-	ELU135	-
40	EGU726	EGU741	EGU756	EGU771	EGU786	EGU794	EGU802	EGU810	-	-	ELU140	-
45	EGU727	EGU742	EGU757	EGU772	-	-	-	-	-	-	-	-
50	EGU728	EGU743	EGU758	EGU773	-	-	-	-	-	-	-	-
55	EGU729	EGU744	EGU759	EGU774	-	-	-	-	-	-	-	-
60	EGU730	EGU745	EGU760	EGU775	-	-	-	-	-	-	-	-
70	EGU731	EGU746	EGU761	EGU776	-	-	-	-	-	-	-	-
80	EGU732	EGU747	EGU762	EGU777	-	-	-	-	-	-	-	-
15-40	EGU733	EGU748	EGU763	EGU778	-	-	EGU803	EGU811	-	-	ELU101	ELU501
45-80	EGU734	EGU749	EGU764	EGU779	EGU787	EGU795	-	-	-	-	-	ELU505

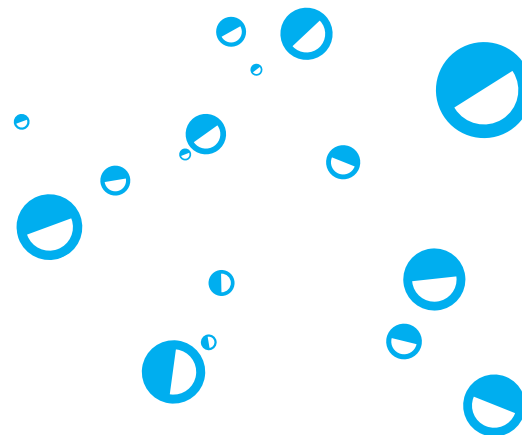


Peeso
Reamers

Barbed
Broach

Gates
Glidden

Size	28mm	32mm	25mm		One Size
No.0	-	-	EGU870	-	-
No.1	EGU820	EGU827	EGU871	-	EGU845
No.2	EGU821	EGU828	EGU872	-	EGU846
No.3	EGU822	EGU829	EGU873	-	EGU847
No.4	EGU823	EGU830	EGU874	-	EGU848
No.5	EGU824	EGU831	EGU875	-	EGU849
No.6	EGU825	EGU832	EGU876	-	EGU850
No.1-6	-	EGU833	-	-	EGU851
Assorted	EGU826	-	-	-	-

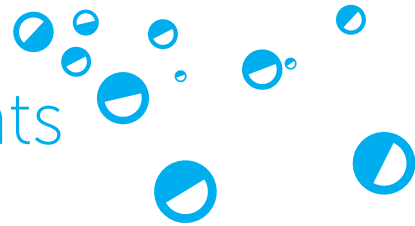


Why you love UnoDent

"They have an extensive range
of quality hand instruments that
offer a great level of precision"

Endodontic Hand Instruments

Files



Size	NiTi S Files		S Files			SS K Files				Sterile NiTi K Files			
	21mm	25mm	21mm	25mm	28mm	21mm	25mm	28mm	31mm	21mm	25mm	28mm	31mm
8	-	-	EOU308	EOU608	EOU908	EGU200	EGU211	EGU222	EGU233	EGU270	EGU286	EGU302	EOU318
10	-	-	EOU310	EOU610	EOU910	EGU201	EGU212	EGU223	EGU234	EGU271	EGU287	EGU303	EOU319
15	EOU115	EOU015	EOU315	EOU615	EOU915	EGU202	EGU213	EGU224	EGU235	EGU272	EGU288	EGU304	EOU320
20	EOU120	EOU020	EOU320	EOU620	EOU920	EGU203	EGU214	EGU225	EGU236	EGU273	EGU289	EGU305	EOU321
25	EOU125	EOU025	EOU325	EOU625	EOU925	EGU204	EGU215	EGU226	EGU237	EGU274	EGU290	EGU306	EOU322
30	EOU130	EOU030	EOU330	EOU630	-	EGU205	EGU216	EGU227	EGU238	EGU275	EGU291	EGU307	EOU323
35	EOU135	EOU035	EOU335	EOU635	EOU935	EGU206	EGU217	EGU228	EGU239	EGU276	EGU292	EGU308	EOU324
40	-	EOU040	EOU340	EOU640	EOU940	EGU207	EGU218	EGU229	EGU240	EGU277	EGU293	EGU309	EOU325
45	-	-	EOU345	EOU645	EOU945	EGU208	EGU219	EGU230	EGU241	EGU278	EGU294	EGU310	EOU326
50	EOU150	EOU050	EOU350	EOU650	EOU950	-	-	-	-	EGU279	EGU295	EGU311	EOU327
55	EOU155	-	EOU355	EOU655	EOU955	-	-	-	-	EGU280	EGU296	EGU312	EOU328
60	EOU160	EOU060	EOU360	EOU660	EOU960	-	-	-	-	EGU281	EGU297	EGU313	EOU329
70	EOU170	EOU070	EOU370	EOU670	EOU970	-	-	-	-	EGU282	EGU298	EGU314	EOU330
80	EOU180	EOU080	EOU380	EOU680	EOU980	-	-	-	-	EGU283	EGU299	EGU315	EOU331
15-40	EOU101	EOU001	EOU301	EOU601	-	EGU209	EGU220	EGU231	EGU242	EGU284	EGU300	EGU316	EOU332
45-80	-	EOU005	EOU305	EOU605	EOU905	EGU210	EGU221	EGU232	EGU243	EGU285	EGU301	EGU317	EOU333



Size	Hedstrom Files			SS Hedstrom Files				NiTi Hedstrom Files				NiTi S Files RA	
	21mm	25mm	28mm	21mm	25mm	28mm	31mm	21mm	25mm	28mm	31mm	21mm	25mm
8	EHU108	EHU508	EHU808	-	-	-	-	EGU400	EGU416	EGU432	EGU448	-	-
10	-	-	-	EGU350	EGU358	EGU366	EGU374	EGU401	EGU417	EGU433	EGU449	-	-
15	-	-	-	EGU351	EGU359	EGU367	EGU375	EGU402	EGU418	EGU434	EGU450	-	-
20	-	-	-	EGU352	EGU360	EGU368	EGU376	EGU403	EGU419	EGU435	EGU451	-	-
25	-	-	-	EGU353	EGU361	EGU369	EGU377	EGU404	EGU420	EGU436	EGU452	-	-
30	-	-	-	EGU354	EGU362	EGU370	EGU378	EGU405	EGU421	EGU437	EGU453	-	-
35	-	-	-	EGU355	EGU363	EGU371	EGU379	EGU406	EGU422	EGU438	EGU454	-	-
40	-	-	-	EGU356	EGU364	EGU372	EGU380	EGU407	EGU423	EGU439	EGU455	EOU440	-
45	EHU145	EHU545	EHU845	-	-	-	-	EGU408	EGU424	EGU440	EGU456	EOU445	EOU745
50	EHU150	EHU550	EHU850	-	-	-	-	EGU409	EGU425	EGU441	EGU457	-	EOU750
55	EHU155	EHU555	EHU855	-	-	-	-	EGU410	EGU426	EGU442	EGU458	EOU455	EOU755
60	EHU160	EHU560	EHU860	-	-	-	-	EGU411	EGU427	EGU443	EGU459	EOU460	EOU760
70	EHU170	EHU570	EHU870	-	-	-	-	EGU412	EGU428	EGU444	EGU460	EOU470	-
80	-	EHU580	EHU880	-	-	-	-	EGU413	EGU429	EGU445	EGU461	EOU480	EOU780
15-40	-	-	-	EGU357	EGU365	EGU373	EGU381	EGU414	EGU430	EGU446	EGU462	-	-
45-80	EHU105	EHU505	EHU805	-	-	-	-	EGU415	EGU431	EGU447	EGU463	-	-

Endodontic Hand Instruments

Spreaders

Fillers

Pluggers



Sterile NiTi
Spreaders

Paste
Fillers

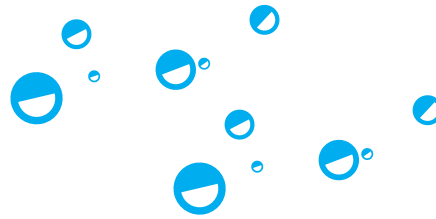
Paste Fillers
+ Springs

Sterile NiTi
Pluggers

Finger
Pluggers

Size	21mm	25mm	28mm	31mm	21mm	25mm	21mm	25mm	21mm	25mm	28mm	31mm	25mm
8	-	-	-	-	-	-	-	-	-	-	-	-	-
10	-	-	-	-	-	-	-	-	-	-	-	-	-
15	EGU680	EGU687	EGU694	EGU701	-	-	-	-	EGU640	EGU647	EGU654	EGU661	-
20	EGU681	EGU688	EGU695	EGU702	-	-	-	-	EGU641	EGU648	EGU655	EGU662	EUU520
25	EGU682	EGU689	EGU696	EGU703	ECU125	ECU525	ECU225	ECU625	EGU642	EGU649	EGU656	EGU663	EUU530
30	EGU683	EGU690	EGU697	EGU704	ECU130	ECU530	ECU230	ECU630	EGU643	EGU650	EGU657	EGU664	-
35	EGU684	EGU691	EGU698	EGU705	ECU135	ECU535	ECU235	ECU635	EGU644	EGU651	EGU658	EGU665	EUU540
40	EGU685	EGU692	EGU699	EGU706	ECU140	ECU540	ECU240	ECU640	EGU645	EGU652	EGU659	EGU666	-
45	-	-	-	-	-	-	-	-	-	-	-	-	-
50	-	-	-	-	-	-	-	-	-	-	-	-	EUU550
55	-	-	-	-	-	-	-	-	-	-	-	-	-
60	-	-	-	-	-	-	-	-	-	-	-	-	EUU560
70	-	-	-	-	-	-	-	-	-	-	-	-	-
80	-	-	-	-	-	-	-	-	-	-	-	-	EUU580
15-40	EGU686	EGU693	EGU700	EGU707	-	-	-	-	EGU646	EGU653	EGU660	EGU667	-
25-40	-	-	-	-	ECU101	ECU501	ECU201	ECU601	-	-	-	-	EUU501
45-80	-	-	-	-	-	-	-	-	-	-	-	EHU805	-

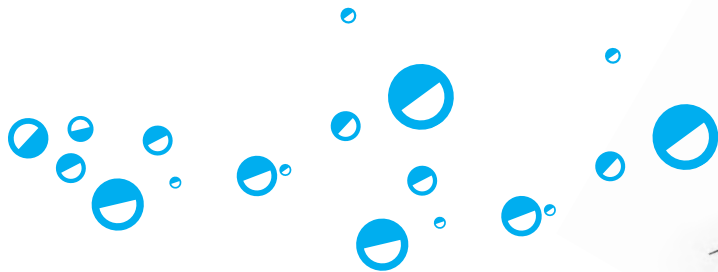
UnoOne Range



Length	Small	Primary	Medium	Large	Asst	Glider
21mm	ELU600	ELU601	ELU602	ELU603	ELU604	ELU615
25mm	ELU605	ELU606	ELU607	ELU608	ELU609	ELU616
31mm	ELU610	ELU611	ELU612	ELU613	ELU614	ELU617

UnoTaper Range

Length	SX	S1	S2	F1	F2	F3	F4	F5	Asst SX-53
19mm	ELU651	-	-	-	-	-	-	-	-
21mm	-	ELU651	ELU652	ELU653	ELU654	ELU655	ELU656	ELU657	ELU658
25mm	-	ELU659	ELU660	ELU661	ELU662	ELU663	ELU664	ELU665	ELU666
31mm	-	ELU667	ELU668	ELU669	ELU670	ELU671	ELU672	ELU673	ELU674



Endodontic Points

Gutta Percha

Paper

Gutta Percha -
Colour Coded

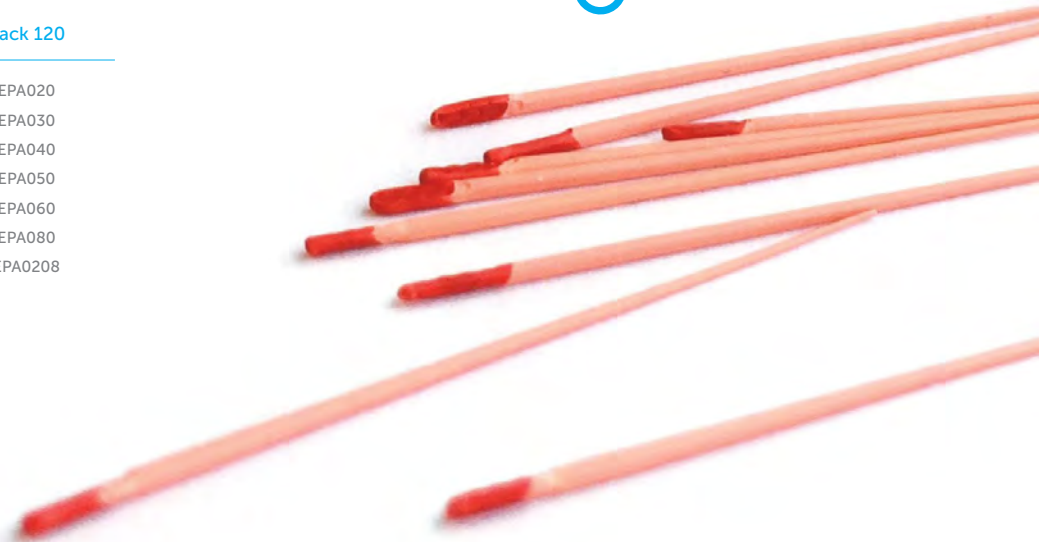
Paper Points -
Colour Coded

Size Pack 120

15	EQO015
20	EQO020
25	EQO025
30	EQO030
35	EQO035
40	EQO040
45	EQO045
50	EQO050
55	EQO055
60	EQO060
70	EQO070
80	EQO080
100	EQO100
120	EQO120
140	EQO140
15/40	EQO154
45/80	EQO458
90/140	EQO901

Size Pack 120

20	EPA020
30	EPA030
40	EPA040
50	EPA050
60	EPA060
80	EPA080
20/80	EPA0208



Find more paper points at DDGroup.com

Endodontic Organisers & Measuring



UnoDent Endo Organiser

A plastic storage container for easy identification of point sizes.

With 240 assorted GP Points (Sizes 15 to 80). **EXB029**
Empty **EXB028**



Endo Holder - Aluminium Open

Circular holders for root canal instruments. No Sponge. Each.

EXB554



Endo Steri Kit

3 x Autoclavable Supports, 50 x Sponges (0.5cm thick) and 25 x Sponges (1cm thick)

EXB550



Endo Organiser Set

A rectangular endodontic holder for root canal instruments. Holds 16 Endo instruments Complete with endometer measure and 25 sponges.

EXB020



Endo Measure - Rectangular

Rectangular aluminium measure for endodontic points. Autoclavable.

EXG700



Endo Holder - Plastic

Circular holders for root canal instruments. Red, Blue or Green. No Sponge. Each.

EXB556, EXB557, EXB558



Refill Sponges

Refill sponges for the Endo Steri Kit (**EXB550**) & Endo Clean Holders (**EXB554, EXB556, EXB567, EXB558**)

0.5cm Thick - **EXB551**
1cm Thick - **EXB552**



Mini Endo Box + Lid

Hold 48 instruments.

EXB060, EXB061



Refill Sponges for Endo Organiser Set

Refill sponges for the Endo Organiser Set (**EXB020**) Pack 25.

EXB022



Endo Measuring Ring Kit

Holds root canal instruments and lubricates during procedures. **EXU010**

Refill Inserts. Bag 48. **EXU013**
Refill Sponges. Bag 10. **EXU011**

Endodontic Tips



Endo E3

For EMS QSU016
For Satelec QSU069



Endo E4

For EMS QSU017
For NSK QSU070



Endo E2

For EMS QSU015



Endo Resin Sealer

Resin based sealer for the permanent obturation of root canal. Compatible with any heated or cold obturation technique.

EVU000



Why you love
UnoDent

"The Endo Instruments are very
effective and durable."



Posts & Cores

[Click the product codes to view more information](#)

Core Build-up & Screw Posts



Alpha-Core
Powder & Liquid Kit
FCA001



UnoCore Tips - Type 3
Yellow. Pack 50.
FCX050



Screwposts - Short
1, 2, 3, 4, 5, 6. Pack 12.
ROO101 - ROO106



Screwposts - Long
1, 2, 4, 5, 6. Pack 12.
ROO301 - ROO306



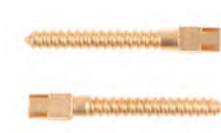
UnoCore DC
Core Build Up Material. 10g.
FCA020



UnoCore Mixing Tips
Blue. Pack 100.
FCX051



Screwposts - Medium
4, 5, 6. Pack 12.
ROO204 - ROO206



Screwposts - Extra Long
4. Pack 12.
ROO404



Impression

[Click the product codes to view more information](#)

Alginate



Fast Set Alginate

A fast setting, very high precision, dust-free elastic alginate. Vanilla or Mint refill. 500g. IAA300, IAA310



Alginate Measuring Set 1

For use with Fast Set Alginate Vanilla (IAA300). IAX325



Spatulas 8X Curved

For Alginate. Unsuitable for use in an autoclave or washer disinfectant. Each. DSP118



Flexibowls

Latex free flexible mixing bowls. Not autoclavable. 10cm - D1 YMA005
11.5cm - D2 YMA010
14.5cm - D3 YMA015
16cm - D4 YMA020



Stic Adhesive

For alginate impression materials. Spray (CFC Free). 200ml or Paint-on. 30ml. IJA120, IJA100



Exact

Strong, tear-resistant, rapid setting alginate. Mint. Blue. 500g. IAA210



Alginate Measuring Set 2

For use with Fast Set Alginate Mint (IAA301) and Orthodontic Alginate (IAA315). IAX320



Spatulas - Straight

For Alginate Straight. Ash Type. Each. DSP412



Mixing Spatula

Single use. Each. DSP935



Stic-off Tray Cleaner

For alginate impression materials. 200ml. IJS200

Impression Materials

Imprep

Our Imprep range gives you excellent detail reproduction and low linear shrinkage, so you can be sure that your impressions are right first time, leaving you with a smile.



Imprep AC Bite Registration Wash Kit

Polyvinyl Siloxane.
Addition cured hydrophilic polysiloxane.

2 x 50ml cartridges, 6 mixing tips green. Colour: Red.

ICU108



Imprep AC Putty

Hydrophilic addition cured vinyl polysiloxane impression material with advanced hydrophilic properties.

Soft Rapid (Fast Set)

Dark Blue. 2 x 450g tubs and 2 x mixing spoons.

ICU105

Soft (Normal Set)

Bright Yellow. 2 x 450g tubs and 2 x mixing spoons.

ICU107



Imprep AC Wash

Hydrophilic addition cured vinyl polysiloxane impression material.

Fast Set - Light Body Rapid

Orange. 2 x 50ml.

ICU102

Normal Set - Regular Body

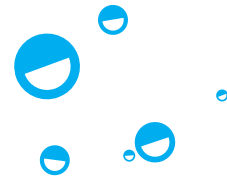
Purple. 2 x 50ml.

ICU101

Normal Set - Light Body

Bright Green. 2 x 50ml.

ICU103





Imprep 2 AC Putty

Vinyl polysiloxane impression material.

Soft Rapid Set

2 x 300ml.
ICU170

Soft Normal Set

2 x 300ml.
ICU171



Imprep 2 AC Wash

Low viscosity hydrophilic Vinyl polysiloxane.

Normal Set - Regular Body

2 x 50ml. ICU172

Fast Set - Light Body Rapid

2 x 50ml. ICU173

Normal Set - Light Body

2 x 50ml. ICU174

Bite Registration Wash - Fast

Set. 100ml. ICU175



Impression Trays

UnoTrays

Constructed of durable plastic for optimum strength. All our trays are designed to ensure excellent retention of impression material.



Upper UnoTrays

Plastic. Box 25 and 1 stainless steel handle.

Edentulous

3 Large	IIU003
5 Average	IIU005

Dentate

11 Large	IIU011
13 Average	IIU013
15 Orthodontic	IIU015
17 Orthodontic	IIU017

Unotray Handles

Autoclavable. Box 10.

IIH100



Lower UnoTrays

Plastic. Box 25 and 1 stainless steel handle.

Edentulous

4 Large	IIU004
6 Average	IIU006

Dentate

12 Large	IIU012
14 Average	IIU014
16 Orthodontic	IIU016
18 Orthodontic	IIU018



Upper/Lower

Plastic. Box 25 and 1 stainless steel handle.

Sectional

20 Anterior	IIU020
-------------	--------

Half

21 Half	IIU021
22 Half	IIU022



UnoTrays with fixed handle

Plastic. Box 25.

Upper

Small	IIU055
Medium	IIU053
Large	IIU051

Lower

Small	IIU056
Medium	IIU054
Large	IIU052



UnoTrays with fixed handle - Upper/Lower

Plastic. Box 25.

Sectional

Anterior	IIU059
----------	--------

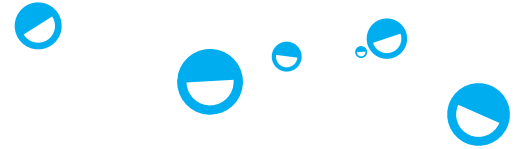
Half

UR/LL	IIU057
UL/LR	IIU058

Impression Trays

Stainless Steel

Designed with rimmed margins for excellent retention without adhesive.



Upper Plain

With Handle. Stainless steel. Autoclavable.

1	IIU201
2	IIU202
3	IIU203
4	IIU204
5	IIU205

Assorted upper / lower pack. 1 of each size.

IIU200



Lower Plain

With Handle. Stainless steel. Autoclavable.

1	IIU211
2	IIU212
3	IIU213
4	IIU214
5	IIU215

Assorted upper / lower pack. 1 of each size.

IIU200



Upper Perforated

With Handle. Stainless steel. Autoclavable.

1	IIU221
2	IIU222
3	IIU223
4	IIU224
5	IIU225

Assorted upper / lower pack. 1 of each size.

IIU220



Lower Perforated

With Handle. Stainless steel. Autoclavable.

1	IIU231
2	IIU232
3	IIU233
4	IIU234
5	IIU235

Assorted upper / lower pack. 1 of each size.

IIU220



Upper/Lower Sectional Perforated

With Handle. Stainless steel. Autoclavable.

UL/LR	IIU226
LL/UR	IIU236



Crown, Bridge & Veneers

[Click the product codes to view more information](#)

Temporary Crown & Veneers



UnoCore DC Core Build Up

A dual-curing highly radiopaque and fluoride-containing flowable composite with excellent mechanical properties for core build-up.

2 x 5ml twin-barrel AutoMix syringes, 10 x mixing tips, 10 x intra-oral tips.

FCA020



Temporary Crown Kit

Made from high quality polycarbonate which is resilient to mouth fluids and can be trimmed without risk of damage.

80 assorted crowns (3 of each size) & organiser.

TCS480



UnoTemp SC

A cold-curing, two paste system with multi-phase polymerisation for temporary crowns & bridges, inlays & onlays.

Shades A1, A2, A3. 50ml.

TEU010, TEU012, TEU014



Laminate Veneer Kit

Contains 10 diamond burs.
Tiger Stripes (0.3 & 0.5mm),
290/010 (T10), 290/010U/F (T10U), 556,
546 Long, 557U/F,
561U/F, 290/012 (T12),
290/012U/F (T12U).

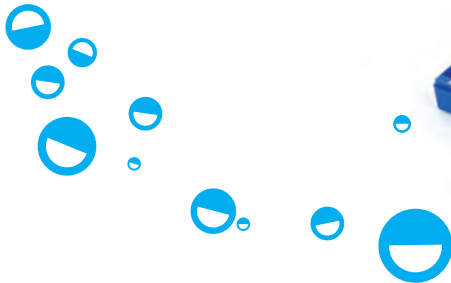
BD008

Why you love UnoDent















"I'm a great fan of Unodent UnoTemp SC temporary crown and bridge material. It sets and polishes well and the shade matches are accurate. The end result can look as good as a permanent crown!"

Dr Gillian Leslie

Crown Forms



Clear Crown Forms

	Centrals						Central-Cervical Part Enlarged						Ex-Large Centrals	
														
Reference	1	11	21	31	41	51	101	111	121	131	141	151	161	171
Left	TCE001	TCE011	TCE021	TCE031	TCE041	TCE051	TCE101	TCE111	TCE121	TCE131	TCE141	TCE151	TCE161	TCE171
Right	TCE301	TCE311	TCE321	TCE331	TCE341	TCE351	TCE401	TCE411	TCE421	TCE431	TCE441	TCE451	TCE461	TCE471

Laterals



Reference	2	12	22	32	42
-----------	---	----	----	----	----

Left	TCE002	TCE012	TCE022	TCE032	TCE042
Right	TCE302	TCE312	TCE322	TCE332	TCE342

Bi-Cuspids



Reference	4	5	14	15	24
-----------	---	---	----	----	----

Left	TCE004	TCE005	TCE014	TCE015	TCE024
Right	TCE304	TCE305	TCE314	TCE315	TCE324

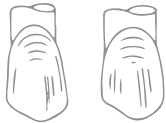
Canines



Reference	3	13	23
-----------	---	----	----

Left	TCE003	TCE013	TCE023
Right	TCE303	TCE313	TCE323

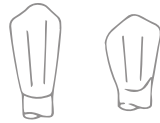
Ex-Large Canines



Reference	33	43
-----------	----	----

Left	TCE033	TCE043
Right	TCE333	TCE343

Lower Canines



Reference	203	213
-----------	-----	-----

Left	TCE203	TCE213
Right	TCE503	TCE513

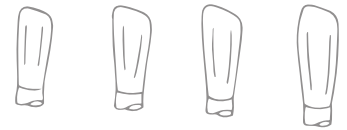
Molar



Reference	6	7	16	17
-----------	---	---	----	----

Left	TCE006	TCE007	TCE016	TCE017
Right	TCE306	TCE307	TCE316	TCE317

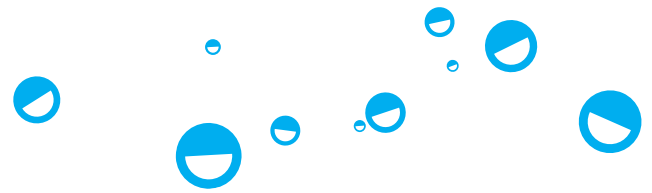
Lower Incisors



Reference	201	202	211	212
-----------	-----	-----	-----	-----

Left	TCE201	TCE202	TC211	TCE212
Right	TCE501	TCE502	TCE511	TCE512

Crown Forms



Polycarbonate Crowns

Upper Central Incisor

Left



Reference	15	16	17	18	19	102	103
Code	TCS015	TCS016	TCS017	TCS018	TCS019	TCS102	TCS103

Right



Reference	100	101	10	11	12	13	14
Code	TCS100	TCS101	TCS010	TCS011	TCS012	TCS013	TCS014

Upper Lateral Incisor

Left



Reference	25	26	27	28	29	200
Code	TCS025	TCS026	TCS027	TCS028	TCS029	TCS200

Right



Reference	2	20	21	22	23	24
Code	TCS002	TCS020	TCS021	TCS022	TCS023	TCS024

Upper Premolars

Reference	40	41	42	43	44
Code	TCS040	TCS041	TCS042	TCS0043	TCS044

Lower Premolars

Reference	50	51	52	53	54
Code	TCS050	TCS051	TCS052	TCS053	TCS054

Lower Incisors

Reference	60	61	62	63	64	65	66	67	68	69
Code	TCS060	TCS061	TCS062	TCS063	TCS064	TCS065	TCS066	TCS067	TCS068	TCS069

Upper Canines

	Left						
Reference	35	36	37	38	39	302	303
Code	TCS035	TCS036	TCS037	TCS038	TCS039	TCS302	TCS303

	Right						
Reference	300	301	30	31	32	33	34
Code	TCS300	TCS301	TCS030	TCS031	TCS032	TCS033	TCS034

Crown & Bridge Instruments



Crown & Bridge Remover

Stainless Steel. Moveable weight. 3 different tips. Autoclavable. **DCR300**

Replacement tips. Pack 3: **DCR301. DCR306**



Crown Scissors - Bee-Bee

Curved. Autoclavable. Each. **DSD310**



Crown Preparation Kit

8 diamond burs for beveling margins. 290/010 (T10), 290/012 (T12), 556, 556C, 554C, 557U/F, 558F, 546.

BD001



Crown Lift Kit

Automatic Crown and Bridge Remover. 3 tips. Autoclavable. 1 handle, 1 pin, 1 plate and 3 hooks.

DCR305



Crown Scissors - Bee-Bee

Straight. Autoclavable. Each. **DSD315**





Tissue Austin 2
Autoclavable. Each.
DRE020



Minnesota Flap
Autoclavable. Each.
DRE125



Oringer Cheek
Autoclavable. Each.
DRO217



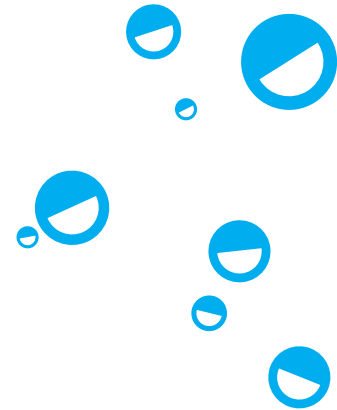
Gum Flap (Rake)
Autoclavable. Each.
DRE120



Kilner
Autoclavable. Each.
DRE015



Bowdler Henry
Autoclavable. Each.
DRE010



Why you love
UnoDent

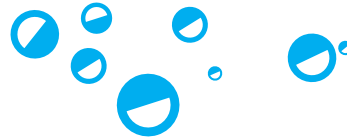
"The Crown and bridge remover can be
used with one hand."



Extraction

[Click the product codes to view more information](#)

Luxators



1
Straight 2mm
DEE001



3
Straight 5mm
DEE003



5
Curved 5mm.
DEE005



7
Bayonet 3mm
DEE007



2
Straight 3mm
DEE002



4
Curved 3mm
DEE004



6
Curved downward 3mm
DEE006



Luxation Kit
Contains: 1, 2, 3, 4, 5, 6, 7
DEE000



Elevators & Curettes



1 Coupland - Small
Autoclavable. Each.
DEE411, DEE111



3 Coupland - Large
Autoclavable. Each.
DEE413, DEE113



31 Cryer's - Right
Autoclavable. Each.
DEE131



9 Periosteal
Autoclavable. Each.
DEE179, DEE440



2 Coupland - Medium
Autoclavable. Each.
DEE412, DEE112



30 Cryer's - Left
Autoclavable. Each.
DEE130



Howarth
Autoclavable. Each.
DEE350



Lucas 86 Bone Curette
Round handle.
Autoclavable. Each.
DSC290



Warwick James

Accessories



Warwick James - Left

Autoclavable. Each.

DEE190, DEE420



Warwick James - Straight

Autoclavable. Each.

DEE193, DEE422



Warwick James - Right

Autoclavable. Each.

DEE192, DEE421



Kidney Dish 8"

Stainless Steel.

Autoclavable. Each.

GTB008



Kidney Dish 9"

Polystyrene Single-use.

Each.

GTB050



Kidney Dish 10"

Stainless Steel.

Autoclavable. Each.

GTB010



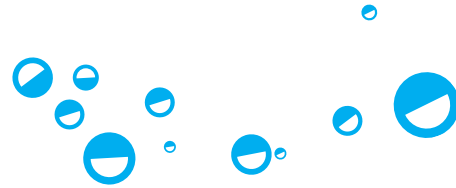
Scalpel Handle 3

Autoclavable. Each.

SHU013

Forceps

Upper Forceps



No. 1
Upper Centrals & Canines

Autoclavable. Each.

DFO104, DFO404



No. 17
Upper Molars - Right

Autoclavable. Each.

DFO112, DFO412



No. 51
Upper Roots / 3rd Molars

Autoclavable. Each.

DFO125, DFO426



No. 76
Upper Roots

Autoclavable. Each.

DFO137, DFO437



No. 93
2nd Upper Molars - Left

Autoclavable. Each.

DFO145



No. 7
Upper Roots & Bicuspid

Autoclavable. Each.

DFO110, DFO410



No. 18
Upper Molars - Left

Autoclavable. Each.

DFO113, DFO413



No. 76N
Upper Roots

Autoclavable. Each.

DFO135, DFO438



No. 67
Upper Molars & Roots

Autoclavable. Each.

DFO106



No. 94
Upper Molars - Right

Autoclavable. Each.

DFO146, DFO446

Upper Forceps



No. 95
Upper Molars - Left
Autoclavable. Each.
DFO147, DFO447



No. 97
Small Upper Molars - Left
Autoclavable. Each.
DFO149



No. 96
Small Upper Molars
Autoclavable. Each.
DFO148



No. 113
Upper Roots (Martin)
Autoclavable. Each.
DFO152



No. 22
Lower Molars
Autoclavable. Each.
DFO116, DFO416



No. 73
Lower Molars
Autoclavable. Each.
DFO127, DFO427



No. 74
Lower Roots
Autoclavable. Each.
DFO128, DFO428



No. 74N
Small Lower Roots & Crowded Incisors
Autoclavable. Each.
DFO131, DFO431



No. 75
Lower Bicuspids
Autoclavable. Each.
DFO134, DFO434



No. 79
Lower Wisdom
Autoclavable. Each.
DFO138

Lower Forceps

Forceps

Upper and Lower Forceps

Childrens Forceps



No. 86 Lower 3rd Molars (Cowhorn)

Autoclavable. Each.
DFO139, DFO440



Roots

Autoclavable. Each.
DFO510



Molars

Autoclavable. Each.
DFO530



No. 37 Child Upper Incisors & Canines

Autoclavable. Each.
DFO119, DFO424



No. 123 Child Lower Teeth

Autoclavable. Each.
DFO155, DFO455



No. 87 Lower Molars (Cowhorn)

Autoclavable. Each.
DFO140



Centrals, Anterior & Bicuspid

Autoclavable. Each.
DFO520



No. 161 Child Lower Molars

Autoclavable. Each.
DFO180



No. 39 Child Upper Molars

Autoclavable. Each.
DFO122, DFO425



No. 138 Child Upper Teeth & Roots

Autoclavable. Each.
DFO160, DFO460

Artery Forceps



Fickling - Toothed

Each.

DFO210



Mosquitos Curved 5"

Autoclavable. Each.

DFO221



Spencer Wells Straight 5"

Stainless Steel. Autoclavable.

DFO228



Mosquitos Haemostat

Grooved with Hole Tip

Each.

DPI362



Mosquitos Straight 5"

Autoclavable. Each.

DFO222



Spencer Wells Curved 5"

Stainless Steel. Autoclavable.

DFO225

Tissue Forceps



Treves Fine 5"

Autoclavable. Each.

DFO213



**Treves/Semkin
Extra-Fine 5"**

Autoclavable. Each.

DFO216



Surgical

[Click the product codes to view more information](#)

Drape kits



Standard Drape Kit - Sterile

2 x Surgeon gown grade A, 4 x Hand towel – wrapped separately, 1 x U-shape drape 180cm x 270cm + adhesive + tube holders, 1 x Mayo cover, 1 x Head bar drape 80cm x 100cm + adhesive, 1 x Outer wrap 180cm x 140cm, 3 x Adhesive film (blue) 20cm x 20cm, 1 x Aspiration system with tip, 1 x Blue adaptor, 2 x Drill sleeves 120cm, 4 x X-ray gauze swab (7.5cm x 7.5cm), 1 x Saliva ejector, 1 x Suction tube connector, 1 x 3 metres of suction tube.

COP400



Complete Drape Kit

2 x Surgeon gown grade A, 4 x Hand towel – wrapped separately, 2 x Face mask ear loop, 1 x Face mask with ties, 2 x Head covers with elastic, 1 x Head covers with ties, 1 x Drape 90cm x 120cm, 1 x Drape 75cm x 90cm, 1 x U-drape 100cm x 150cm + adhesive + tube holders, 1 x Outer wrap 180cm x 140cm, 3 x Adhesive film (blue) 20cm x 20cm, 3 x Adhesive film 5cm x 80cm, 1 x Aspiration system with tip, 1 x Blue adaptor, 3 x Drill sleeves 120cm, 1 x Elastic cap radio cover, 1 x Galley pot (small), 1 x Kidney dish, 4 x X-ray gauze swab (7.5cm x 7.5cm), 1 x Suction tube connector, 1 x 3 metres of suction tube, 1 x Yellow bio hazard bag for trash, 1 x Yankuer (fine), 1 x Plastic tweezers.

COP405



Surgical Gown Kit

1 x Surgeon Gown 60gsm AAMI Level 2. 2 x Hand Towel (40cm x 40cm).

COP410

Surgical Burs

Tungsten Carbide



RA 8 - Round 28mm

Tungsten Carbide. Autoclave prior to use. Single use. Each.
SAU010



HP 8 - Round 51.5mm

Tungsten Carbide. Autoclave prior to use. Single use. Each.
SAU030



HP 8 - Round 70mm

Tungsten Carbide. Autoclave prior to use. Single use. Each.
SAU130



RA 702 - Fissure 28mm

Tungsten Carbide. Autoclave prior to use. Single use. Each.
SAU020



HP 702 - Fissure 51.5mm

Tungsten Carbide. Autoclave prior to use. Single use. Each.
SAU040



HP 702 - Fissure 70mm

Tungsten Carbide. Autoclave prior to use. Single use. Each.
SAU140



Surgical Accessories



Kidney Dish 8"

Stainless Steel.
Autoclavable. Each.
GTB008



Kidney Dish 9"

Polystyrene Single-Use.
Each.
GTB050



Surgical Mallet

Autoclavable. Each.
DCI010



Kidney Dish 10"

Stainless Steel.
Autoclavable. Each.
GTB010



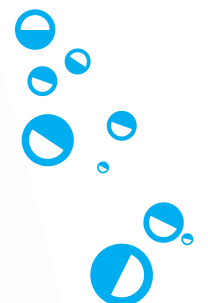
Scalpel Handle 3

Autoclavable. Each.
SHU013



Rhodes Chisel 36/37

Autoclavable.
DEE445





Orthodontics

[Click the product codes to view more information](#)

Photography



Intraoral Photo Mirror - Chromium Coated

Palatal Adult, Palatal Child, Buccal, Lingual or Palatal XL. Each.

XXO001 - XXO005



Intraoral Photo Mirror - Stainless Steel

Adult & Child Palatal, Buccal, Lingual Upper & Lower.

Adult Palatal & Buccal.

Autoclavable. Each.

XXO031 - XXO035



Maxee Cheek Retractor

Child, Teen, Adult. Autoclavable. Each.

DRO309 - DRO311



Kombee Cheek Retractor

Small or large. Autoclavable. Each.

DRS000, DRS001



Cheek Retractors - Long Handle

Adult or Child. Autoclavable up to 121° C. Pack 2.

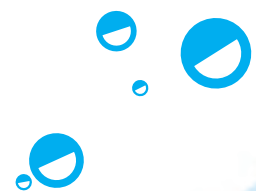
DRE130, DRE140



Lip Retractor Long Handled

Child. Autoclavable. Each.

DRS011



Photography



Extraoral Cheek Retractor - Extended tabs

Child or Adult. Autoclavable.
Each.

DRO110, DRO111



Lip and Cheek Retractor

Child, Teen, Adult.
Autoclavable. Pack 2.

DRO100 - DRO102



Soft Lip & Cheek Retractor

Cold sterilisable. Each.

DRO105



Photo Cheek Retractor - Double Ended

For adult or child. Sterilisable
up to 132°C. Each.

DRO211



Cheek Retractor - Stainless steel

Adult and child.
Sterilisable. Each.

DRO215



Disposable Impression Trays



Paedo - Red

Pack 50.

Upper IIO051

Lower IIO061



X Small - Orange

Pack 50.

Upper IIO052

Lower IIO062



Small - Blue

Pack 50.

Upper IIO053

Lower IIO063



Assorted Packs

Contains 6 sizes, with 10 trays of each size. Pack 60.

Upper IIO070

Lower IIO080



Medium - Green

Pack 50.

Upper IIO054

Lower IIO064



Large - Yellow

Pack 50.

Upper IIO055

Lower IIO065



X Large - Purple

Pack 50.

Upper IIO056

Lower IIO066



Orthodontic Alginate

Strawberry. Extra fast setting.

Tear resistant. 453g.

IAA315

Professional Patient Kits & Bracket Systems

Professional Brackets

Our professional brackets provide unmatched strength, slot accuracy and polished surface smoothness - ensuring free sliding archwires with zero wire notching. Available in MBT & Roth .022 slot technique systems.

- MIM Manufacturing Process
- Strong slot and hooks
- Accurate archwire slot
- Smooth finish - Reduced Friction
- Colour coded markings - easy quadrant identification
- 80-gauge mesh base - excellent retention
- Ample under tie-wing area - easy ligature placement
- Available with gingivally offset lower bicuspids and incisors on a larger offset bonding pad to prevent debonding due to occlusal interference.

Single Patient Kits

U&L 5-5 hooks on 3, 4, 5
U&L 5-5 hooks on 3's
U&L 6-6 Off-set pads & hooks on 3, 4, 5
U&L 6-6 hooks on 3's , LP Tubes
U&L 6-6 hooks on 3's Offset Base, LP Tubes

MBT	Roth
UOB056	UOB025
UOB057	UOB026
UOB058	-
UOB100	-
UOB101	-



Why you love UnoDent

"I have been using the Unodent Brackets and LP buccal tubes for the past 3 years with excellent finishes. They are high quality and comparable with other more expensive brackets and tubes and I have had no problems with bond failures and deliver exactly to their torque prescription."

Dr R.R Mahesh
M-Brace Orthodontics Scotland

	Upper MBT		Upper Roth	
	Left	Right	Left	Right
Central	UOB027	UOB035	UOB000	UOB007
Lateral	UOB028	UOB036	UOB001	UOB008
Cuspid	UOB029	UOB037	-	-
Cuspid - hook	UOB030	UOB038	UOB002	UOB009
1st Bicuspid	UOB031	UOB039	UOB003	UOB010
1st Bicuspid - Mesial hook	UOB032	UOB040	UOB004	UOB011
2nd Bicuspid	UOB033	UOB041	UOB005	UOB012
2nd Bicuspid - Mesial hook	UOB034	UOB042	UOB006	UOB013

	Lower MBT		Lower Roth	
	Left	Right	Left	Right
Anterior	UOB043		UOB014	
Cuspid	UOB044	UOB048	-	-
Cuspid - hook	UOB045	UOB049	UOB015	UOB018
1st Bicuspid	UOB052	UOB053	UOB021	UOB022
1st Bicuspid - Distal hook	UOB046	UOB050	UOB016	UOB019
2nd Bicuspid	UOB054	UOB055	UOB023	UOB024
2nd Bicuspid - Distal hook	UOB047	UOB051	UOB017	UOB020

	Lower MBT Offset Pads	
	Left	Right
Anterior	UOB102	
1st Bicuspid	UOB103	UOB104
1st Bicuspid - Mesial hook	UOB075	UOB078
2nd Bicuspid	UOB077	UOB080
2nd Bicuspid - Mesial hook	UOB076	UOB079



Bands are available on request

Buccal Tubes



Professional Buccal Tubes

- MIM Manufacturing Process
- 80 Gauge mesh base ensuring excellent bond strength
- Colour coded markings for each quadrant

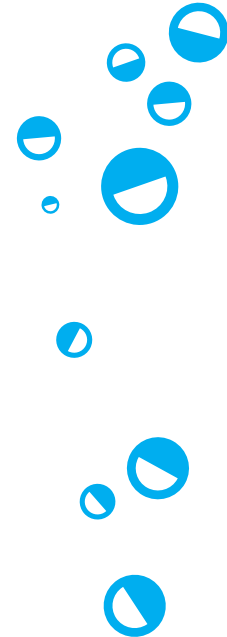
	MBT .022 Slot	Roth .022 Slot
UL6	UOB063	UOB059
UR6	UOB064	UOB060
LL6	UOB065	UOB061
LR6	UOB066	UOB062



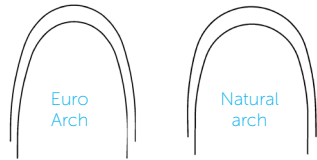
Professional Low Profile Buccal Tubes

- Ultra Low Profile Design - LP Buccal Tubes Offer maximum comfort to the patient
- MIM manufacturing process
- Funneled entrance assists in easy wire insertion
- 80-gauge mesh base with anatomical contour ensures precise fit and excellent bond strength
- Permanent numbered quadrant identification marking

	MBT LP .022 Slot	Roth LP .022 Slot
UL6	UOB071	UOB067
UR6	UOB072	UOB068
LL6	UOB073	UOB069
LR6	UOB074	UOB070
UL7	UOB091	UOB095
UR7	UOB092	UOB096
LL7	UOB093	UOB097
LR7	UOB094	UOB098



Archwires



NiTi
Pack 10

Round	Upper Natural	Upper Euro	Lower Natural	Lower Euro
0.012	UOW111	UOW121	-	UOW126
0.014	UOW112	UOW122	UOW117	UOW127
0.016	UOW113	UOW123	UOW118	UOW128
0.018	UOW114	UOW124	UOW119	UOW129
0.020	UOW115	UOW125	UOW120	UOW130

Rectangular	Upper Natural	Upper Euro	Lower Natural	Lower Euro
16x16	UOW131	UOW147	UOW139	UOW155
16x22	UOW132	UOW148	UOW140	UOW156
17x22	UOW133	UOW149	UOW141	UOW157
17x25	UOW134	UOW150	UOW142	UOW158
18x22	UOW135	UOW151	UOW143	UOW159
18x25	UOW136	UOW152	UOW144	UOW160
19x25	UOW137	UOW153	UOW145	UOW161
21x25	UOW138	UOW154	UOW146	UOW162

NiTi - Individually Wrapped
Pack 10



Round	Upper Natural	Upper Euro	Lower Natural	Lower Euro
0.012	UOW170	UOW180	UOW175	UOW185
0.014	UOW171	UOW181	UOW176	UOW186
0.016	UOW172	UOW182	UOW177	UOW187
0.018	UOW173	UOW183	UOW178	UOW188
0.020	UOW174	UOW184	UOW179	UOW189

Rectangular	Upper Natural	Upper Euro	Lower Natural	Lower Euro
16x16	UOW266	UOW282	UOW274	UOW290
16x22	UOW267	UOW283	UOW275	UOW291
17x22	UOW268	UOW284	UOW276	UOW292
17x25	UOW269	UOW285	UOW277	UOW293
18x22	UOW270	UOW286	UOW278	UOW294
18x25	UOW271	UOW287	UOW279	UOW295
19x25	UOW272	UOW288	UOW280	UOW296
21x25	UOW273	UOW289	UOW281	UOW297

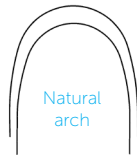
Archwires

Heat Activated NiTi

Pack 10



Euro Arch



Natural arch

Round	Upper Natural	Upper Euro	Lower Natural	Lower Euro
0.012	UOW210	UOW220	UOW215	UOW225
0.014	UOW211	UOW221	UOW216	UOW226
0.016	UOW212	UOW222	UOW217	UOW227
0.018	UOW213	UOW223	UOW218	UOW228
0.020	UOW214	UOW224	UOW219	UOW229

Rectangular	Upper Natural	Upper Euro	Lower Natural	Lower Euro
16x16	UOW230	UOW250	UOW238	UOW258
16x22	UOW231	UOW251	UOW239	UOW259
17x22	UOW232	UOW252	UOW240	UOW260
17x25	UOW233	UOW253	UOW241	UOW261
18x22	UOW234	UOW254	UOW242	UOW262
18x25	UOW235	UOW255	UOW243	UOW263
19x25	UOW236	UOW256	UOW244	UOW264
21x25	UOW237	UOW257	UOW245	UOW265

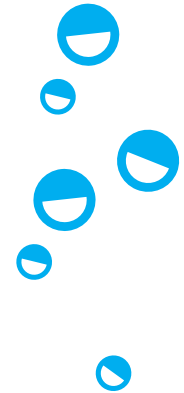
NiTi Reverse Curve

Pack 10



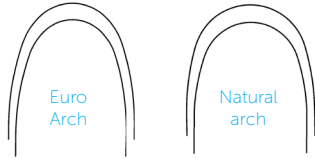
Round	Upper	Lower
0.012	UOW326	UOW331
0.014	UOW327	UOW332
0.016	UOW328	UOW333
0.018	UOW329	UOW334
0.020	UOW330	UOW335

Rectangular	Upper	Lower
16x16	UOW310	UOW318
16x22	UOW311	UOW319
17x22	UOW312	UOW320
17x25	UOW313	UOW321
18x22	UOW314	UOW322
18x25	UOW315	UOW323
19x25	UOW316	UOW324
21x25	UOW317	UOW325



Stainless Steel

Pack 10



Round	Upper Natural	Upper Euro	Lower Natural	Lower Euro
0.012	UOW001	UOW021	UOW006	UOW026
0.014	UOW002	UOW022	UOW007	UOW027
0.016	UOW003	UOW023	UOW008	UOW028
0.018	UOW004	UOW024	UOW009	UOW029
0.020	UOW005	UOW025	UOW010	UOW030

Rectangular	Upper Natural	Upper Euro	Lower Natural	Lower Euro
16x16	UOW041	UOW071	UOW047	UOW077
16x22	UOW042	UOW072	UOW048	UOW078
17x25	UOW043	UOW073	UOW049	UOW079
18x25	UOW044	UOW074	UOW050	UOW080
19x25	UOW045	UOW075	UOW051	UOW081
21x25	UOW046	UOW076	UOW052	UOW082

Stainless Steel - Individually Wrapped

Pack 10



Round	Upper Natural	Upper Euro	Lower Natural	Lower Euro
0.012	UOW011	UOW031	UOW016	UOW036
0.014	UOW012	UOW032	UOW017	UOW037
0.016	UOW013	UOW033	UOW018	UOW038
0.018	UOW014	UOW034	UOW019	UOW039
0.020	UOW015	UOW035	UOW020	UOW040

Rectangular	Upper Natural	Upper Euro	Lower Natural	Lower Euro
16x16	UOW055	UOW085	UOW061	UOW091
16x22	UOW056	UOW086	UOW062	UOW092
17x25	UOW057	UOW087	UOW063	UOW093
18x25	UOW058	UOW088	UOW064	UOW094
19x25	UOW059	UOW089	UOW065	UOW095
21x25	UOW060	UOW090	UOW066	UOW096

Archwires

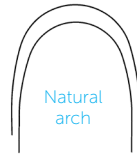
Titanium Molybdenum Alloy

Pack 10



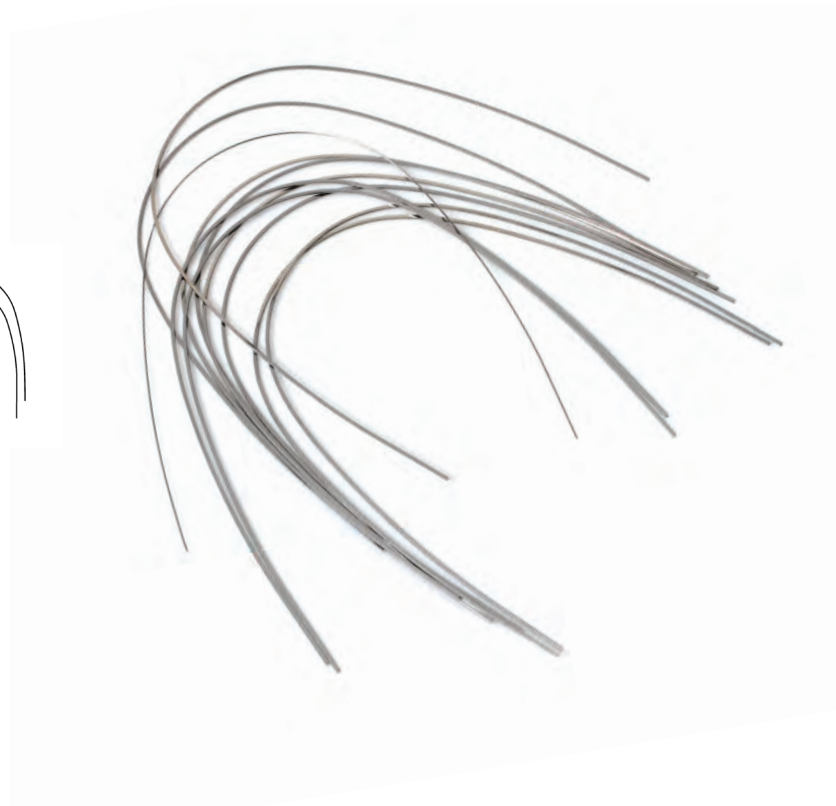
Round

	Upper Euro	Lower Euro
0.016	UOW525	UOW528
0.018	UOW526	UOW529
0.020	UOW527	UOW530



Rectangular

	Upper Natural	Upper Euro	Lower Natural	Lower Euro
16x22	UOW336	UOW342	UOW339	UOW345
17x25	UOW337	UOW343	UOW340	UOW346
19x25	UOW338	UOW344	UOW341	UOW347



Archwires - Euro II

UnoDent Professional ortho archwires in the Euro II archform. Damon* compatible and for all self ligation techniques is now available in Heat Activated Copper Niti with and without stops, Stainless Steel and TMA ensuring your practice has the correct wire at every stage of treatment. Individually-wrapped wires (Uno Packs) are delivered autoclavable envelopes.

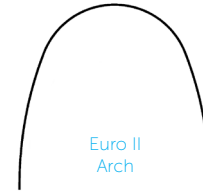
Pre-stopped Copper Niti - Individually Wrapped

Pack 10



Copper Niti - Individually Wrapped

Pack 10



Round

0.013
0.014
0.016
0.018

Euro II

UOW505
UOW506
UOW507
UOW508

Round

0.013
0.014
0.016
0.018

Euro II

UOW512
UOW513
UOW514
UOW515

Rectangular

14x25
16x25
18x25

Euro II

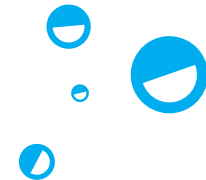
UOW509
UOW510
UOW511

Rectangular

14x25
16x25
18x25

Euro II

UOW516
UOW517
UOW518



*Damon is a registered trademark of Ormco and does not imply endorsement by the manufacturer.

Archwires - Euro II

UnoDent Professional ortho archwires in the Euro II archform. Damon* compatible and for all self ligation techniques is now available in Heat Activated Copper Niti with and without stops, Stainless Steel and TMA ensuring your practice has the correct wire at every stage of treatment. Individually-wrapped wires (Uno Packs) come in autoclavable envelopes.

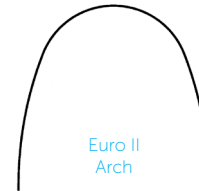
Stainless Steel - Individually Wrapped

Pack 10



Titanium Molybdenum Alloy - Individually Wrapped

Pack 10



Round

Euro II

0.018

UOW500

0.020

UOW501

Round

Euro II

0.016

UOW519

0.018

UOW520

0.020

UOW521

Rectangular

Euro II

16x22

UOW502

17x25

UOW503

19x25

UOW504

Rectangular

Euro II

16x22

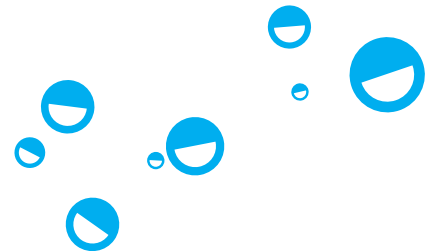
UOW522

18x25

UOW523

19x25

UOW524



*Damon is a registered trademark of Ormco and does not imply endorsement by the manufacturer.

Auxiliaries, Springs & Attachments



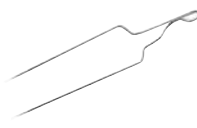
Long Stainless Steel Ligatures

.010 UOW412
.012 UOW413



Short Stainless Steel Twisted Ligatures

.010 UOW414



Long Kobayashi Ligatures

.012 UOW408
.014 UOW409



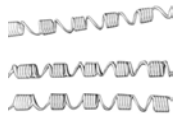
Short Kobayashi Twisted Ligatures

.012 UOW410
.014 UOW411



NiTi Open Coil Spring Spool

.010 x .030 UOW415
.012 x .030 UOW416



NiTi Open and Closed Distalising Spring

Pack 3.
.010x.045 UOW417



NiTi Closed Coil Spring

mm length of spring excluding eyelets. Pack 10.
010' x 3mm UOW400
010' x 6mm UOW401
010' x 9mm UOW402
010' x 12mm UOW403
012' x 3mm UOW404
012' x 6mm UOW405
012' x 9mm UOW406
012' x 12mm UOW407



Lingual Buttons

Pack 10.
Rectangular Posterior UOB106
Round Anterior UOB107



Eruption Chain Gold Eyelet

Eruption Chain and Pad for bonding to impacted cuspid. Each.
Round Base UOB105

Orthodontic Instruments



PFI-6 Flat Plastic DE

Octagonal Handle -
Autoclavable. Each.

DPF106



Bonding Tweezers

Serrated with alignment
tip. Each.

DPI391, DPI390, DPI311,
DPI332



Separating Plier

Each.

DPI330



Mathieu Narrow Tip Pliers

Heat sterilisable. Each.

DNE165



Mauns Cutter

Autoclavable. Stainless
steel. Each.

DCV300



4 Carver Osteo-Mitchell DE

Autoclavable. Each.

DCC170, DCC197, DCC198



Double Ended Ligature Director- Octagonal

Autoclavable Handle. Each.

DPI310



Keats Buccal Tube Tweezer

Regular or Reverse Action.

DPI357, DPI410.



Mershon Band Pusher

Stainless steel. Each.

DPI313



Adams and Spring Former Pliers

64 or 65. Autoclavable.
Stainless steel. Each.

DPI164, DPI165

Accessories



Archwire Organiser

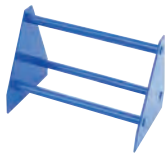
Archwire Holder With Cover. Each.

222500



Orthoblaster

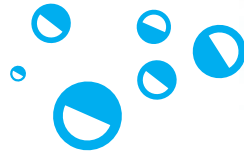
A fully autoclavable sandblaster. Simple installation kit and sample of 50 micron abrasive grit are included. Each QYU050



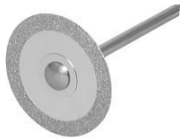
A Frame Plier rack

Blue. Each.

DPI358



IPR



Superflex Diamond Discs

Single and Double Sided
Diamond Discs mounted on a fixed mandrel. Latch Grip. Each.

Single Sided

19mm BHU155, BHU170

22mm BHU160, BHU175

Double Sided

16mm BHU230

19mm BHU231

22mm BHU232



Stripping Discs

Serrated diamond discs with fine diamond grit. Latch Grip. Each.

Double Sided RA

19mm BHU190

22mm BHU220



Disc Guards

Protects patient's lip, cheeks and gums from laceration. Pack 3.

BHU500



ProxyMate Intro Packs

10 strips (variety of grits),
2 handles. Refills Available.

Single and Double sided grits KFS200

Double sided grits KFS000



Debonding Burs



010-204 RA / RA 1170

Tapered Fissure 8 fluted.
Latch Grip. Blister Pack Solo
Peel. Single Dispensing Pull
Back Label. Pack 5.
296500



014-204 / RA 1171½ 014-314 / FG 1171½

Tapered Fissure 8 fluted.
Latch Grip. Blister Pack Solo
Peel. Single Dispensing Pull
Back Label. Pack 5.

Latch Grip RA **296501**
Friction Grip FG **296503**



Orthodontic Bur Starter Kit

4 different trimmers/burs,
3 mounted lab polishers
medium and fine grit,
a polishing wheel and
a screw type mandrel.
KUO000



018-061 / RA 7006 018-061 / FG 7006

Round Head. Blister Pack
Solo Peel. Single Dispensing
Pull Back Label Pack 5.

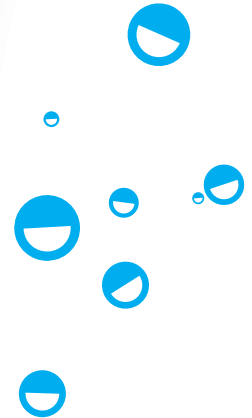
Latch Grip RA **296505**
Friction Grip FG **296504**



1172 RA 1172 FG

Tapered Fissure 8 fluted.
Blister Pack Solo Peel.
Single Dispensing Pull Back
Label. Pack 10.

Latch Grip RA **296506**
Friction Grip FG **296507**



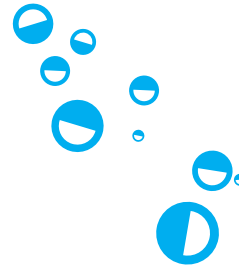


Laboratory Supplies

[Click the product codes to view more information](#)

Acrylic Trimmers

Our Tungsten Carbide Acrylic Trimmers make the trimming of hard materials a breeze. Made from high-class tungsten carbide they have a strong construction and precision toothing.



Cross Cut Standard



72 77 78 79 251 351

040	-	-	BAT035	-	-	BAT040
045	-	-	-	BAT025	-	-
060	BAT030	BAT000/045	BAT010	BAT020	BAT050	BAT005

Plain Cut Standard



72 77 78 79 251 351

040	-	-	-	BAT127	BAT135	-
045	-	-	-	BAT126	-	-
060	BAT110	BAT130	BAT120	BAT125	BAT140	BAT115



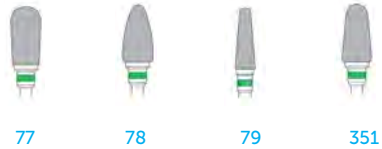
Acrylic trimmers

Cross Cut Fine



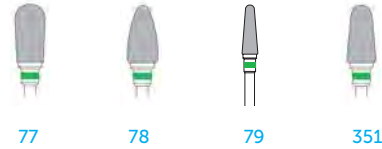
040	-	-	BAT086	-	-
045	-	-	BAT080	-	-
060	BAT055	BAT065	BAT075	BAT070	BAT060

Cross Cut Coarse



045	-	-	BAT105	-
060	BAT090	BAT100	-	BAT095

Plain Cut Coarse



045	-	-	BAT160	-
060	BAT145	BAT155	-	BAT150



Denture Accessories & Lab Materials



Willis Bite Gauge

Autoclavable. Each.
IXW012



Denture Adjustment Kit

6 assorted points in HP shank. 1 TC trimmer, 4 silicone points for initial polishing, 1 silicone point for high lustre final polishing.
KUD000



Wax Knives - Wooden handle

Small or Large. Cold sterilisation only. Each.
JWX010, JWX015



Denture Reline Powder

Self curing chairside denture reline material.
100g Powder
IFR307



Denture Reline Kit

Self curing chairside denture reline material. Soft or Hard.
100g Powder, 100ml Liquid, 30ml Acrylic Bonding Primer, Powder & Liquid Measures, 20 x Mixing Cups, and Brush.
IFR302, IFR304



Iwansson Gauge

Stainless steel. Autoclavable. Each.
EXG610



Fox's Bite Plane

Non-Autoclavable. Cold Sterilisation only. Each.
IXF010



Wax Knives - Metal

Small or Large. Autoclavable. Each.
JWX020, JWX025



Denture Reline Liquid

Self curing chairside denture reline material.
Soft or Hard. 100ml Liquid.
IFR308, IFR309

Index

Click the page numbers to go each section

A

Acrylic Trimmers 165, 166
Adhesive 121
Aesthetic Restorative 94
Aiming Devices 39
Aiming Ring 39
Alginate 121, 149
Alpha-Core 119
Alpha-Pro 49
Amalgam Carriers 97, 98, 99
Amalgam Gun 99
Amalgam Well 99
Apron Dispenser 14
Aqua-Fil 94
Aqua-Silver 94
Archwires 153, 154, 156, 157, 158
Acrylic trimmers 165, 166
Artery Forceps 141
Articulating paper 96
Aspirator Cleaner 11
Aspirators 12
Aspisept 11
AutoRinse 11

B

Barbed Broaches 111
Barrier Envelopes 40
Barrier Film 18
Bib Dispenser 14
Bibs 33
Bite Covers 40
Bite Gauge 167

Bite Plane 167
Bite Registration 122
Bonds 86
Brackets 150
Bristle Brushes 51
Brushes 51, 54
Buccal Tubes 152
Bur Brushes 77
Bur Disinfecting Box 77
Bur Holders 76
Bur Kits 75
Burs 56, 78, 144, 163

C

Carvers 85
Chair Cover 18
Cheek Retractor 147
Chisel 145
Cleanser 10, 94
Clear Crown Forms 128
Code Rings 87
Compomers 90
Composite Brush 93
Composite Instruments 84
Composites 90, 92
Compule Gun 93
Consumables 8
Core Build-up 119
Cotton Dispenser 16
Cotton Pellet Dispenser 16
Cotton Products 30
Cotton Wool Pellets 30
Cotton Wool Rolls 30
Coversight 19
CrackerJack 19
Crown & Bridge 132
Crown Forms 128, 130
Cup Dispenser 17
Cups 31
Curettes 48, 136

Curing Light Sleeve 18

D

Debonding Burs 163
Dental Needles 5
Denture Reline 167
DE-SEN 55
Developer 41
Diamond Burs 57, 58, 60, 62
Digital Sensor Holders 39
Disc Guards 162
Disinfectant 9, 10
Disinfectant Spray 10
Disinfectant Wipes 9
Disinfection Bath 10
Disinfection Box 21
Dispensers 14, 16
DispoTray 31
Dosing Device 17
Drape kits 143
Drying Cloths 9

E

Elevators 136
Endodontic Instruments 110, 112, 114
Endodontic Organisers 116
Endodontics 106
Endodontic Tips 117
Endo Measuring 116
Equinox 19
Exact 121
Examination 24
Excavators 79, 80
Extraction 134

F

Face Mask Dispenser 16
Facial Tissue Dispenser 16

Files 112, 113
Fillers 114
Film 41
Film Pockets 40
Fixer 41
Floor Cleaner 10
Flowables 89
Forceps 37, 96, 107, 138, 140

G

Gates Glidden 111
Gauge 167
Gauze 30
Gauze Dispenser 16
Glasses 19
Glass Ionomers 94
Glove Box Dispenser 15
Gloves 32
Gold Diamond Burs 64, 66

H

Hand Disinfectant 11
Hand Pump 17
Hand Scalers 46, 47
Hanger 41
Headrest Cover 18
Hygiene 42
Hygiene Sleeve 40

I

Imprep 122
Impression Materials 120, 122, 149
Impression Trays 124, 125
Indicator Strip 23
Infection Control 8
Instrument Cassette 20
Instrument Rack 20
Instrument Trays 20

Interdental Brushes 52, 54
Intraoral Photo Mirror 147
Intra-oral Tips 55
IPR 162

K

Kidney Dish 137, 145

L

Lab Materials 167
Laboratory Supplies 164
Luminos 90
Luxators 135

M

Mandrels 55, 105
Matrix 100
Matrix Bands 101
Matrix Retainers 101
Measuring 121
Mirror Handle 25
Mirrors 25
Mirror Spray 25
Mixing Pads 88
Mixing Tips 119
Mouth Mirror 25
Mouthwash 31

N

Nano-Ceramic LC 90
Needle Holders 34, 35
Needles 4, 5
Nylon Brushes 51

O

Orthoblaster 161
Orthodontic Alginate 149

Orthodontic Instruments 160
Orthodontics 146

P

Paper Points 115
Perio Probes 28
Photo Cheek Retractor 148
Photography 147, 148
Photo Mirror 147
Plastic Filling Instruments
81, 82
Plier rack 161
Pluggers 114, 115
Points 115
Polishing 103, 104
Polishing Cups 50
Polishing Paste 104
Polycarbonate Crowns 130
Prevention 42
Probes 26, 28
Prophy Cups 50
Prophy Paste 49
Protective Barriers 18
Proxymate 162
Purified Water 23
Putty 122

Q

QuickShot 39

R

Ready Foil 96
Reamers 110, 111
Restoratives 78
Rubber Cups 50
Rubber Dam Clamps 108
Rubber Dam Forceps 107
Rubber Dam Frame 107

Rubber Dam Punch 107
Rubber Dams 107
Rubber Dam Template 107

S

Safety Glasses 19
Saliva Ejector Dispenser 17
Scaler Tips 44
Scalpel Handle 137, 145
Scissors 36, 132
Screwposts 119
Sealents 55
Shade Guide 93
Sharps Box 7
Spatulas 93, 95, 121
Spreaders 114
Springs 159
Steel Burs 68, 70
Sterilisation 20, 22
Sterilisation Pouches 22
Steriltray 21
Stic Adhesive 121
Stripping Disc 162
Surface Disinfectant 9, 10
Surgical 142
Surgical Burs 144
Surgical Gown 143
Surgical Mallet 145
Suspension Foam 11
Swabs 30
Syringe Accessories 7
Syringes 4, 6
Syringe Sleeve 18

T

Temporary Cement 95
Temporary Crown 127
Temporary Luting Cement 95
Throat Pack 30

Tissue Forceps 141
Toothbrushes 54
Torque Wrenches 45
Tottle Clips 87
Tray Liners 31
Tray Sleeve 18
Trimmer 103, 104
Tungsten Carbide Burs 71,
72, 74
Tweezers 29, 160
Twister Diamond Burs 67

U

Ultrasonic Cleaner 11
Ultrasonic inserts 43
UnoCore 119, 127
Unoloy 97
Unolux 55, 91
UnoTect 19
UnoTemp 127
UnoTrays 124

V

Veneer Kit 127
Veneers 126
Visors 19

W

Warwick James 137
Wash 122
Wax Knives 167
WildCat Burs 74
Wipes 9
WrapAround 16, 18, 40

X

X-Ray 38
X-Ray Head Cover 18

X-Ray Marker 41
X-Ray Viewer 41

We Care

"The UnoDent range has been the heart of DD ever since it was introduced in the early 1990s. After reeling from the effects of the Pandemic it is imperative that we evaluate how this has affected our profession, our staff, and our patients. The UnoDent range of over 3000 items has been developed by listening to Dentists' needs and feedback to provide a range of products that deliver clinical expertise. Quality has always been at the forefront of our minds, and this is an area within which we refuse to compromise. We understand how important it is to use a brand that you can trust and integrate within your everyday practice but is also priced competitively and UnoDent does just that!. We understand that spending time on product selection can make a significant difference to your clinical work as well as have a positive impact on your business."

Dr Priya Gaiind
Head of Clinical at DD, General Dental
Practitioner and Author

UNODENT

Discover the whole range at [DDgroup.com](https://www.ddgroup.com)