

Aligner

Accessories Collection



www.ddgroup.com

| 2023/24

Orthodontics at DD

The Aligner Accessories Collection

It has never been a better time to incorporate Orthodontic treatment into your Practice. Patients are now actively seeking treatment in the current climate and with many discreet options available it is one of the **fastest growing areas of Dentistry**. Non-AGPs is now the norm for Orthodontic treatment; with very little downtime for dental surgeries which can only make a more pleasurable experience for you and your patients.*

DD are very much at the forefront of specialist products for the profession, and with the plethora of treatments offered from simple removable appliances through to materials for Fixed Orthodontics, Aligners, Lingual Ortho, TADS, and Orthognathic Surgery we are here to deliver what you need.

The Aligner Collection is only a fraction of what is available and is ever evolving.

We hope to make the buying process for all your materials as easy as possible. Specialist impartial advice is only a call or email away. Enjoy!



John Lancaster
Head of Orthodontics

This collection is interactive. Just click the product code below each item to shop and add to your basket!



*We recommend you always seek the most current guidance from the British Orthodontic Society.



Contents:

Hand Strips	Page 4
Manual IPR Kits	Page 7
Mechanical IPR	Page 9
Clear Collection	Page 16
Patient Supplies	Page 20
Buttons & Attachments	Page 22
Adhesives	Page 25
Plastics	Page 28
Aligner Scissors	Page 30
Silver Motion Distalizer	Page 31

Ortho  ontics

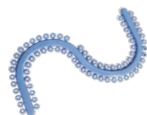
Dentaurum Dentalastic Separators

Blue for Posteriors. For quick and easy separation of teeth. Radiopaque. Inner dia 2.1mm. Pack 1000.
Blue 200240



UnoDent Professional UnoDent Separators

Separating Elastics 15 sticks with 70 Seps. Pack 1050.
Blue UOE200



Intensiv Separate and Strip

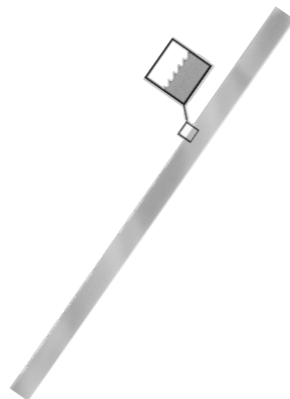
A serrated diamond strip which allows you to break tight contact points and remove excess composite. Pack 3.

Double-Sided
OKD090
Single-Sided
OKD091



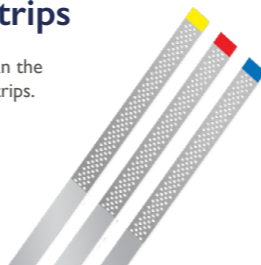
Komet Serrated Saw Diamond Strips

Diamond Strips, Pack 10.
.18mm 90µm Green Coarse
Single Sided
KFK028
.21mm 45µm Blue Medium
Double Sided
BFK806
.05mm Serrated Separating Saw
KFK010



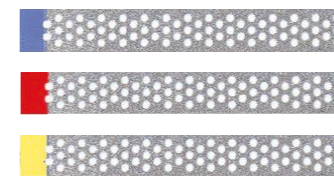
Komet Vision Flex Diamond Strips

These strips have a more dead-soft quality than the typical springy feel of conventional diamond strips. Pack 10.
.13mm 45µm Blue Medium KFK026
.10 mm 30µm Red Fine KFK025
.08 mm 15µm Yellow Extra Fine KFK027
Assorted 15 Pack KFK020



Edenta Diamond Finishing Strips

For removing excess material from the proximal regions of filling - materials like composites, acrylics, glass ionomer cements and amalgam. Removing excess cement after placing inlays, onlays and laminate veneers. Especially useful for enamel reduction as recommended for aligner treatments



Perforated Pack 10		Non Perforated Pack 5	
.13mm Blue Medium 45µm	KFE209	.13mm Blue Medium 45µm	KFE220
.10mm Red Fine 30µm	KFE213	.10mm Red Fine 30µm	KFE221
.08mm Yellow Extra Fine 15µm	KFE210	.08mm Yellow Extra Fine 15µm	KFE222

G&H Lightning Strips

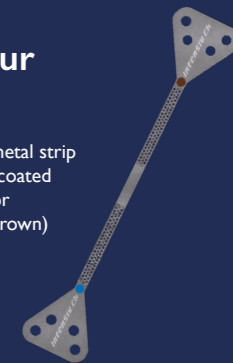
Aluminium Oxide. Pack 12.

Single Sided		Double Sided	
4mm	200023	4mm	200020
6mm	200024	6mm	200021
8mm	200025	8mm	200022



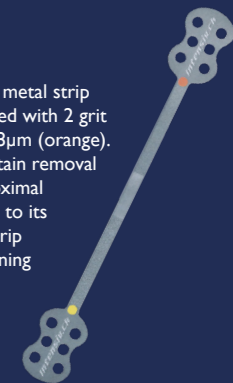
Intensiv ProxoContour Coarse

Intensiv ProxoContour metal strip with one sided diamond-coated grit sizes: 60 µm (Blue) for contouring and 40 µm (Brown) for finishing.
Pack 6 KFH040



Intensiv ProxoPolish

The Intensiv ProxoPolish metal strip is one side diamond coated with 2 grit sizes 15µm (yellow) and 8µm (orange). Efficient and controlled stain removal and gloss polishing of proximal surfaces is offered thanks to its ultra-fine grit sizes and strip dimensions while maintaining the tooth anatomy.
Pack 6 KFH041



Hand Strips & Gauges

Aligner Accessories



ESSIX



Manual IPR Kits

Aligner Accessories



Essix Flex-View Strips

These perforated stainless steel strips allow optimal visibility and minimise clogging. Flex-View™ Interproximal Strips also feature a gateway area for easy access for interproximal stripping and finishing. All strips are single-sided and autoclavable.

2.5mm Narrow strips - Pack10

X-Fine Yellow	KFO015
Fine Red	KFO016
Medium Blue	KFO017

Pack15

5 x wide extra Fine, 5 x Fine, 5 Medium

Assorted	KFO010
----------	--------

2.5mm Wide strips - Pack10

X-Fine Yellow	KFO003
Fine Red	OKD200
Medium Blue	KFO004

Pack15

5 x wide extra Fine, 5 x Fine, 5 Medium

Assorted	KFO001
----------	--------



Six Month Smiles IPR Gauge

5 Stainless Steel gauges of thickness .1mm, .2mm, .3mm, .4mm and .5mm
400087



Intensiv IPR Distance Control Set

- Stainless Steel
- Autoclavable
- 8 Sizes 0.1mm to 1.0mm

OKD100



Swiss Dentacare Measuring Gauge 5 leaf gauges

5 different thicknesses to measure the IPR space. 0.1mm to 0.5mm.
200154



QwikStrip QwikStrip Ultimate Kit

Industry Leading Qwik Strips.

- Easy to follow IPR Sequence
- Interproximal Cement Removal
- Use for Any Aligner regime
- Double or Single Sided
- Autoclavable
- Kit 10

Contains:
5 Single-Sided (.07mm-.18mm)
5 Double-Sided (.18mm-.40mm).
KFH050



Watch a QwikStrip IPR Demonstration. Just scan the QR code with your phone.

QwikStrip QwikStrip Single-Sided

Ideal for breaking contacts and for interproximal cement removal. Pack 10.

.07mm Yellow	KFH052
.10mm Red	KFH053
.13mm Blue	KFH054
.16mm Green	KFH055
.18mm Black	KFH056

QwikStrip QwikStrip Curved

Ideal for breaking contacts and for interproximal cement removal. Pack 10.

.07mm Yellow	KFH057
.10mm Red	KFH058
.13mm Blue	KFH059
.16mm Green	KFH060
.18mm Black	KFH061

QwikStrip QwikStrip Double-Sided

Ideal for breaking contacts and for interproximal cement removal. Pack 10.

.18mm Yellow	KFH062
.20mm Red	KFH063
.25mm Blue	KFH064
.30mm Green	KFH065
.40mm Black	KFH066

QwikStrip QwikStrip Serrated

Ideal for breaking contacts and for interproximal cement removal. Pack 10.

.05mm White	KFH051
-------------	--------



UnoDent Professional ProxyMate

Features an adjustable handle to lock curvatures into place for maximum precision, patient safety and minimal fatigue. Ideal for proximal contact adjustment, marginal crown seating, veneers, onlays and proximal contouring of composite fillings.

Variety Intro Kit - Single/Double: 10 strips in a variety of grits (single and double-sided). KFS200



ProxyMate 2-Hand Serrated Saw KFS010

Single-Sided		Double-Sided	
Variety	KFS100	Variety	KFS000
S/Fine	KFS101	S/Fine	KFS001
Fine	KFS102	Fine	KFS002
Medium	KFS103	Medium	KFS003
Coarse	KFS104	Coarse	KFS004

Edenta StripFix Finishing Strip System

StripFIX finishing strip system Manual Diamond Strip Holders. Use without the handle. Hold between thumb and middle finger. Index placed on the diamond strip plate. Strip Holder Swivel Mounted. May be locked in 4 positions for optimal access to the oral cavity. Simple quick-plug system to hold the strip. All components Autoclavable.

StripFix Diamond IPR Kit 4 Files and Handle OKD230



Refills - single sided

.13 mm 45 µm Blue Medium	OKD231
.10 mm 30 µm Red Fine	OKD232
.08 mm 15 µm Yellow Super Fine	OKD233
.04 mm White Serrated Edge	OKD234
StripFIX Handle	OKD235

Swiss Dentacare G5 Prolign Starter Kit

G5- Prolign Calibrated files, used with an EVA Reciprocating handpiece provides a precise method of reducing tooth enamel which is safe, accurate, and gentler to the patient than manual reduction.

Use in Orthodontic and all aligner treatments where you need to ensure that you are creating the correct amount of enamel reduction.

- 5 G5 Double Sided Files calibrated to the limit of enamel removal 0.1mm to 0.5mm
- 2 G5 Single Sided Files 0.1 and 0.2mm
- G5 Shanks
- Measuring Gauge
- 2x Polishing Strips
- Handpiece
- All files autoclavable

Coxo Handpiece 200170
NSK Handpiece 200163



Watch how to use the G5 Prolign Starter Kit. Just scan the QR code with your phone.

Swiss Dentacare G5 ProLign Files

Refill Components. Pack 3.

Single Sided
0.10mm 200152
0.20mm 200151

Double Sided
0.10mm OKD110
0.20mm 200141
0.30mm 200142
0.40mm 200143
0.50mm 200145



Swiss Dentacare G5-Shank

The SDC-G5 Shank is a file holder for use exclusively with all G5 instruments. Autoclavable. Pink Refill. Pack 20. 200157





Intensiv IPR Set Professional

Everything you need for effective IPR. Reciprocating W&H Eva Handpiece and the full range of Intensiv Files and manual strips.



All in a single autoclave box.
OKD048

Intensiv Swingle Ortho Kits

W&H Synea Reciprocating Handpiece with a 6 file set
Swingle Ortho W&H with Light OKD049
Swingle Ortho W&H without Light OKD050

MOST POPULAR



Intensiv Ortho Strips Single Sided Set

Contains an assortment of 6 oscillating files:

- Left & Right
- 40µm Medium Contouring Red
- 25µm Fine Finishing White
- 15µm Polishing Yellow

Pack 6.
OKD056



Intensiv Ortho Strips Double Sided Set

Contains an assortment of 4 oscillating files:

- 60µm Coarse Contouring Brown
- 40µm Medium Contouring Red
- 25µm Fine Finishing White
- 15µm Polishing Yellow

Pack 4.
OKD054
Pack 6.
OKD055



Intensiv Ortho Strips

Fast, efficient and precise. Single and Double Sided Metal framed files for reduction and polishing. Pack 3.

- Double Sided
- 08µm Opener Serrated Orange OKD080
- 15µm Polishing Yellow OKD060
- 25µm Fine Finishing White OKD063
- 40µm Medium Contouring Red OKD066
- 60µm Coarse Contouring Brown OKD069
- 80µm Extra Coarse Reduction Blue OKD095



	Single-Sided Left	Single-Sided Right
08µm Opener Serrated Orange	OKD081	OKD082
15µm Polishing Yellow	OKD059	OKD062
25µm Fine Finishing White	OKD083	OKD065
40µm Medium Contouring Red	OKD084	OKD068
60µm Coarse Contouring Brown	OKD073	OKD071
80µm Extra Coarse Reduction Blue	OKD096	OKD097

GC Tooth Mousse Assorted Intro Pack

Use Tooth Mousse Inter-proximally in any situation where enamel is compromised.

When Tooth Mousse is applied to tooth surfaces, the CPP-ACP molecule binds to biofilm, plaque, bacteria, hydroxyapatite and surrounding soft tissue.

- Delivers Recaldent™ Casein Phosphopeptide - Amorphous Calcium Phosphate
- Inhibits enamel demineralisation and induces remineralisation
- Reduces hypersensitivity by obturating open dentinal tubules
- Prevents initial caries forming thanks to the anti-cariogenic properties
- Reverses white spot lesions
- The delicious flavours stimulate saliva flow for an enhanced effectiveness of CPP-ACP



PHG000



Komet
Oscillating Segment Disc Kit

Komet 4594 Oscillating Disc Set
KFK040



Fully Autoclavable Medical Box
• 11 Discs
• 2 Mosquito IPR Burs
• 2 Diamond IPR Strips



Watch the YouTube video.
Just scan the QR code
with your phone

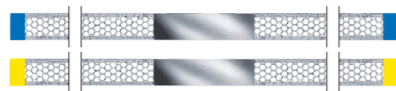
- OS1FV.000.140 Top Coated 0.13mm Fine
 - OS1FH.000.140 Bottom Coated 0.13mm Fine
 - OS15FV.000.140 Top Coated 0.15mm Fine
 - OS15FH.000.140 Bottom Coated 0.15mm Fine
 - OS1F.000.140 Double Coated 0.15mm Fine
 - OS20FV.000.140 Top Coated 0.20mm Fine
 - OS20FH.000.140 Bottom Coated 0.20mm Fine
 - OS20F.000.140 Double Coated 0.20mm Fine
 - OS25M.000.140 Double Coated 0.25mm Medium
 - OS1M.000.140 Double Coated 0.30mm Medium
 - OS35M.000.140 Double Coated 0.35mm Medium
- Interproximal Bur Fine
IPR Diamond Bur

- KFK080
- KFK079
- KFK082
- KFK081
- KFK071
- KFK086
- KFK085
- KFK076
- KFK074
- KFK070
- KFK075
- 296027
- 296024

Technique PDF
Available on
Website

WS37.000 KFK026

WS37EF.000 KFK027



Your advantages at a glance:

Oscillating Segment Discs

The oscillating Komet contra-angle and the patented Komet OS segment discs sparked off a revolution in orthodontics.

Prof. Dr. Jost-Brinkmann of the Charité Berlin provided his scientific advice during the development of this system which ensures greater safety during stripping. The oscillating 60° segment discs have a swivel angle of only 30°. This allows space-saving work and ensures unobstructed vision onto the site, thus minimising the risk of injury to the soft tissue.

Benefits

- Minimal risk of injury to the soft tissue due to oscillating operation
- Optimal view and excellent removal of debris thanks to the honeycomb design
- Ring and laser markings on the shank for easier identification



OS30 Orthodontic
Handpiece Kit
Including 4 Discs
KFK041

4 Discs:
KFK070, KFK071,
KFK072, KFK073



Swiss Dentacare IPR Diamond Bur Fine Red 392

IPR Diamond Bur. Fine Grain.
Red 392. Pack 5.

200148 

Edenta IPR Diamond Bur 392-016

IPR Diamond Bur. Pack 5.

Medium 296022

Fine 296024



Intensiv Interprox Diamond Burs

Pack 6.
314 167 524 FG Blue 296026
314 167 514 FG Red 296027
314 167 504 FG Yellow 296028



Essix IPR Bur Kit (512C)

Kit contains:

- 10 piece bur block Autoclavable
 - 4x Safe-tipped carbide burs (900v1-699C) 296045
 - 2x 100µm safe-tipped finishing diamond burs (9001-5MDST) 296044
 - 2x 30µm safe-tipped finishing diamond burs (9001-5FDST) 296043
 - 2x Fine needle diamond burs Non safe tipped (9001-55000) 296041
- IPR Bur Kit 296040

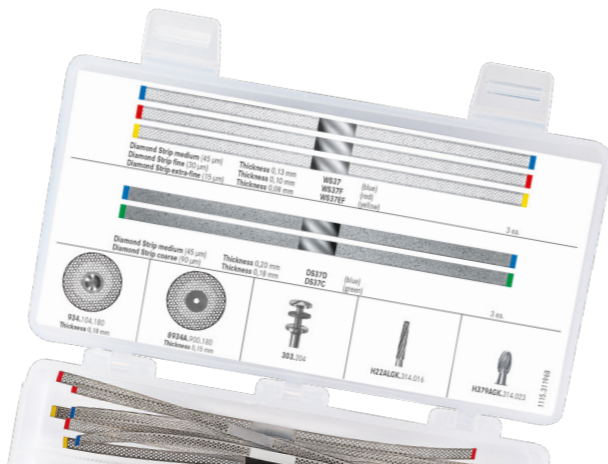


296041 296043 296044 296045

Komet Orthodontic IPR Kit

The Komet IPR & Disc kit contains:

- Vision Flex Strips
 - 3x WS37 .13mm 45µm Blue Medium KFK026
 - 3x WS37F .10 mm 30µm Red Fine KFK025
 - 3x WS37EF .08 mm 15µm Yellow Extra Fine KFK027
 - 3x DS37D .21mm 45µm Blue Medium Double Sided BFK806
 - 3x DS37C .18mm 90µm Green Coarse Single Sided KFK028
 - 1x 934.104.180 Diamond Disc .18mm 18mm Diameter KFK055
 - 1x 8934A.900.180 .15mm 14mm Diameter KFK056
 - 1x Contra Angle Mandrell KFK057
 - 1x De-Bonding Bur 200147
 - 1x H379AGK Egg De-Bonding Bur 200150
- Non-autoclavable storage box.
KFK030



Technique PDF Available on Website

Pop on Diamond Finishing Discs

Double sided 1mm Edge
Diamond Coated. Each.

10mm KFK050

14mm KFK051

18mm KFK052

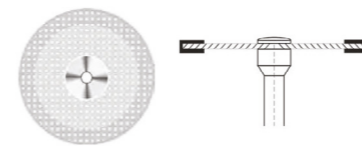
Mandrel KFK053



Edenta Superflex Diamond Open Mesh Disc

Superflex Diamond Open Meshed Disc
Double Sided 22mm Diameter,
0.15mm Thickness.

BHU233



UnoDent Superflex Diamond Discs

Single and Double Sided Diamond
discs with fine diamond grit.
For separating ceramics, plaster,
acrylics and resin veneers.
Fixed mandrel. Latch Grip. Each.

Single Sided

19mm BHU155, BHU170

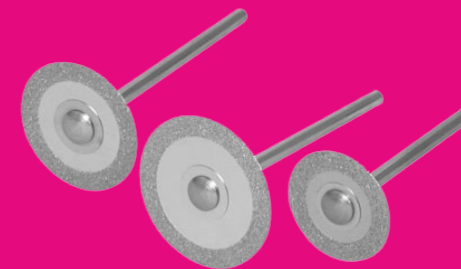
22mm BHU160, BHU175

Double Sided

16mm BHU230

19mm BHU231

22mm BHU232



UnoDent Disc Guards

Easy to use: attach
disc guard to adapter,
slide adapter onto
slow speed straight
handpiece, insert
disc and close latch.
Pack 3.

BHU500



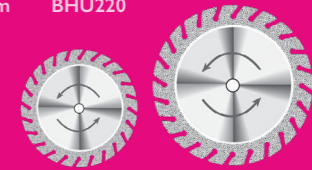
UnoDent Stripping Discs

Serrated diamond discs with fine
diamond grit, for separating ceramics,
plaster, acrylics and resin veneers. Latch
Grip. Each.

Double Sided RA

19mm BHU190

22mm BHU220



Transform Smiles with Ease

Precise Adjustments For Better Results



Pictures of The Eraser

Clear Collection



Hu-Friedy Tear Drop

An instrument created to add a notch at the gingival margin of clear aligners anywhere elastic hooks are required within the arch. The Tear Drop provides a reservoir to hold the elastics in place as the aligner is seated. This permits easier manipulation of elastics by the patient.

DPI542 | 678-800



Hu-Friedy Vertical

Correcting rotations is often a challenge with aligners. The Vertical emphasizes over-correction of rotations by producing an indentation at the mesial or distal line angles on the facial and/or lingual of a specific tooth. As an option, a rotational couple can also be created using vertical indents on facial and lingual surfaces on opposing sides of a tooth. The Vertical can also be used to produce an indent to produce a mild "nudge" to enhance resolution of in-and-out discrepancies. It can also be used to apply an indent immediately next to an attachment to enhance the adaptation of the aligner to angle between that attachment and the aligner.

DPI543 | 678-801



Hu-Friedy Horizontal

The Horizontal instrument produces an indentation to accent individual root torque. It also serves a second purpose by enhancing retention of either clear aligners or retainers by placing an indent into a tooth's undercut or below a bonded attachment to enhance the contact of the aligner to that attachment.

DPI544 | 678-802



Hu-Friedy Hole Punch

The Hole Punch is used to create half-moon cut-outs for relief of clear aligners around bonded buttons used for elastics. No need to attempt to attach buttons to plastic trays. In addition, the Hole Punch can nip away plastic to provide soft tissue clearance to prevent aligner impingement of tissue.

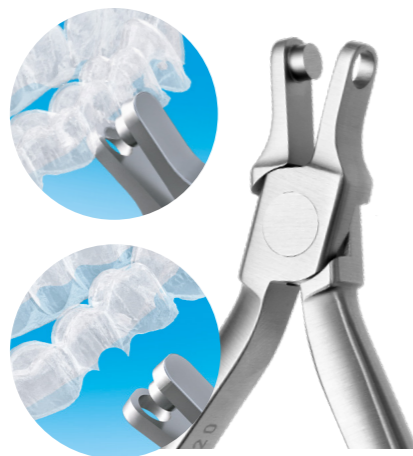
DPI545 | 678-803



Hu-Friedy Petite Punch

The Petite Punch cuts a 4.5mm half-moon cutout in an aligner for relief of the plastic around bonded buttons used for elastics. When only a small cut-out is required to provide clearance for buttons or hooks on the buccal but also on the lingual of any tooth in the aligner, especially for smaller teeth. The Petite Punch can also nip away plastic to provide soft tissue clearance to prevent aligner impingement of tissue.

DPI566 | 678-805



Hu-Friedy Spot

The Spot creates a tiny, rounded dimple for spot contacts to accent small individual tooth movements or added aligner retention. It is typically used to accent movements on any tooth that just needs a slight "nudge". The Spot's small depression placed adjacent to the gingival embrasures can also enhance the retentiveness of an aligner or retainer.

DPI565 | 678-804



Hu-Friedy Clockwise Wedge

The Clockwise Wedge is used to produce a wedge-shaped indent in an aligner at the facial and at the opposite line angle lingual for a specific tooth to create a rotational couple.

Used to create a clockwise rotation.

DPI567 | 678-808

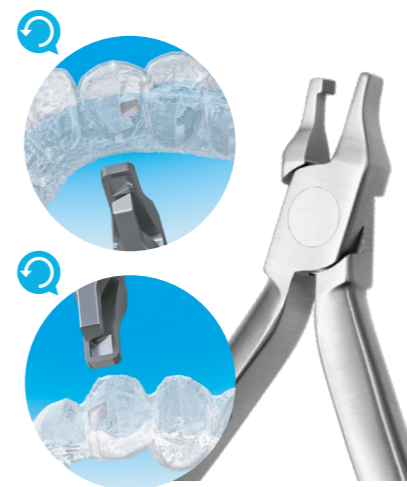


Hu-Friedy Counter Clockwise Wedge

The Counter Clockwise Wedge is used to produce a wedge-shaped indent in an aligner at the facial and at the opposite line angle lingual for a specific tooth to create a rotational couple.

Used to create a counter clockwise rotation.

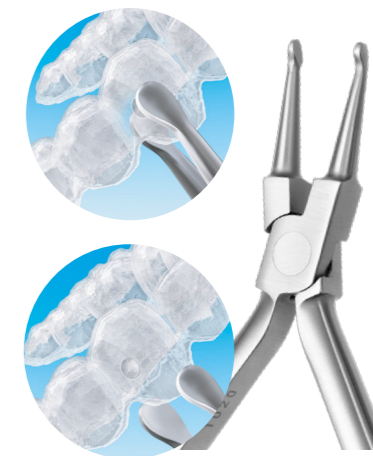
DPI568 | 678-807



Hu-Friedy Eraser

The Eraser is designed to reverse or remove unwanted indents placed by other instruments in the Clear Collection™ Series. The Eraser is designed to flatten the plastic where a depression was inadvertently positioned, or the accent is no longer required.

DPI569 | 678-811

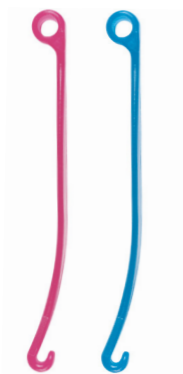




Dentsply Sirona Retainer Retrievers

- Remove appliances cleanly and efficiently
- Store in appliance case
- Packaged in individual tamper-proof patient bags
- Pack 10

Tropical Blue 251005
Tropical Pink 251010



Bestdent Retainer Boxes

Assorted. Small or Deep size. 24 pack.

Small YOM374
Deep YOM380



G&H Retainer Boxes

Assorted. Pack 50.

15 Colours YOM370



Essix ART Appliance Remover Tool

ART makes it easy for patients to remove their clear Essix appliances! Removes clear Essix appliances from the cheek-side and/or from the tongue side. Increases patient comfort and compliance. LATEX FREE makes a great patient gift.

Pack 25 251040



Dentsply Sirona Retainer Brite

Cleans and brightens retainers, night guards, mouthguards, splints and most other removable dental appliances.

- Helps remove plaque & tartar
- Kills germs & bacteria
- Keeps appliance minty fresh

Pack 36 - 1 month supply
YOM255

Pack 96 - 3 month supply
YOM256



DD Ortho Aligner Home Care kit

This pack contains the essential items needed to help patients clean and care for their aligners as well as maintaining good Oral Hygiene.
PZS062



DD Ortho Aligner Home Care Kit Mini

- 1 x Aligner Hook
 - 2 x Retainer Brite Tablets
 - 2 x Aligner Chewies
 - 1 x Storage Case
- PZS063



GC MI Paste Plus Assorted Pack

Bio-available calcium and phosphate, with fluoride. Pack 5.
PHG105



GC Tooth Mousse Assorted Intro Pack

Bio-available calcium and phosphate, without fluoride. Pack 5
PHG000



Orthocare Swirl Plus Orthodontic Fluoride Mouthrinse

A new and improved formula contains a special blend of natural mint oils to create a Cool Refreshing Peppermint Flavour, 500ml.
PZS064



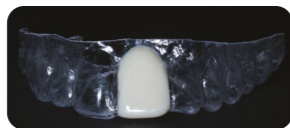
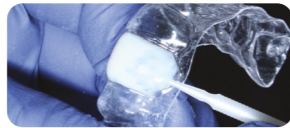


Reliance Perfect-A-Smile Pontic Paint



Quick and Easy.

- Light cure applies smoothly to clear aligner sockets
- Translucent to match enamel
- High elasticity, bonds to any clear aligner
- No Lab costs or chair time.

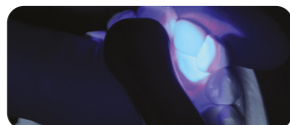


A1	200261	B1	200266
A2	200262	C1	200263
A3.5	200233	C4	200264
		D3	200265

Reliance Perfect-A-Smile Pontic Putty



Fingertip Pontic Fabrication. Light cure composite paste with putty-like consistency. Facilitates tooth shape formation. Eliminates pontics, wax & PVS. Bonds tenaciously to stone/resin models. Provides proper clear aligner anatomy. 5g.



- Clinical Applications:**
- Pontic formation by hand
 - Bridges/fills gaps in model
 - Facilitates proper aligner formation
- 200237

Reliance Ortho-FlexTech

Use post aligner treatment.

- Stabilizes orthodontic corrections
- Microetched for maximum retention
- Prevents rotational relapses
- Easy application - naturally forms to lingual arch curvature
- Fully passive no wire bending required
- Less doctor time / less chair time
- Low failure rate due to "flex linkage"
- No laboratory costs or delays
- Improved patient comfort - lays flat against the teeth
- Choice of material
- 30"/76cm



NEW Nickel Free 14kt White Gold	200229
14kt White Gold Microetched	200230
Stainless Steel Microetched	200231



Use Reliance University for all clinical procedures. Just scan the QR code with your phone.

Reliance Reliamold

Molds are translucent and flexible to facilitate composite loading, curing and disengagement. Pack 25.

Button Attachment	FBE434
Starter Kit	FBE437
Molar Pad Attachment	FBE438



G&H Lingual Buttons

Pack 20.
Hexagonal Contoured
Round Flat

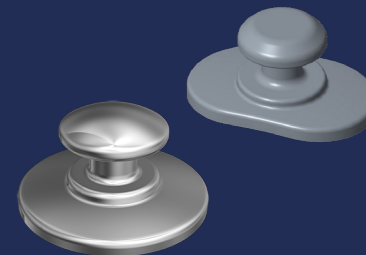
200004
272014



UnoDent Professional Lingual Buttons

Pack 10.
Round Anterior
Rectangular Posterior

UOB107
UOB106



MEM Zeronik Lingual Micro Button

Super Low Profile. Allows composite to penetrate the mesh. Designed for use in aligner treatments. Nickel-free. Pack 10.
272012



Buttons & Attachments

Aligner Accessories

Power Arms

Bondable Power Arms for tooth translation and bodily movement. Bond to Canines to tip the clinical crown. Used extensively in aligner treatment protocols.

Left 200134
Right 200133



Aesthetic Attachments

G&H Composite Eyelet

Features a funnel entry system for easy wire introduction and a low profile shape. Opening will accommodate wires up to 021 x 025. Pack 5. 276004



Gestenco Freddy Ceramic Button

Pack 10. 200245



Gestenco Freddy Hook

Pack 10. 200246



Adhesives

Aligner Accessories



Reliance Flow Tain with Tips

Light cure flowable composite, slumps over wire, thixotropic viscosity, cures glassy and smooth. Each.

1.5g Syringe FBE345
1.5g LV Syringe FBE396



Reliance Assure + All Surface Bonding Resin

Will bond to all intra oral surfaces without additional primers.

- Use on: Enamel (Normal, Atypical, Wet or Dry, Dentin, Porcelain (Say good bye to Hydrofluoric Acid and Barrier Gels), Metal (Gold, Amalgam, Stainless Steel), Composite, Zirconia
- Use with any light, cure or chemical bonding systems
- No drying or light curing required
- Use as your conventional bond
- No need for extra bonding agents
- Long Shelf Life

6ml FBE367



Reliance GoTo® Adhesive Paste

GoTo® is a light cure adhesive with superior handling properties. It does not allow bracket flotation once placed on the tooth or during flash removal. A fraction of the retail cost of leading, competitive light cure pastes!

4g Syringe 2A8933
10 x 0.4g Tips 2A8932



Reliance Light Cure Retainer Paste

L.C.R is a flowable, light cure orthodontic adhesive intended to be used within an orthodontic, dental or pediatric dental office for the bonding of lingual retainers, creation of occlusal build-ups and for retention of thermoplastic aligners.

Push Syringe 5g FBE379
Preloaded Tips FBE421





Reliance T.K.O. Composite Bite Turbo Gel Pink

Looking for a Triad substitute?

Reliance is excited to introduce T.K.O.!

- Quick light cure acrylic repair
- Gentle impact Resin Matrix (great for occlusal build-ups)
- Needle tip dispensing for accurate and ergonomic placement
- Will not wear opposing tooth structure
- Relatively easy to remove at the end of treatment
- Used in both lab and chairside settings
- Pink shade to contrast enamel

3.4g FBE430
Tips 2A8904



Reliance Perfect-A-Smile Pontic Putty

Fingertip Pontic Fabrication. Light cure composite paste with putty-like consistency. Facilitates tooth shape formation. Eliminates pontics, wax & PVS. Bonds tenaciously to stone/resin models. Provides proper clear aligner anatomy. 5g.

Clinical Applications:

- Pontic formation by hand
- Bridges/fills gaps in model
- Facilitates proper aligner formation

200237



Reliance Bond Aligner Adhesive with Tips

Clear light cure adhesive to adhere metal, ceramic or plastic attachments to any aligner plastic.

1.5g 2A8834



Danville StarFlow

StarFlow is a light-cure, highly filled flowable composite for anterior and posterior restorations, low wear applications, cavity liner and conservative restorations. Use with Orthoflextech for lingual retention. Excellent wear resistance. 5g. Each.

- Radiopaque
- Sub-micron particle size gives superior polishability and resistance to staining
- True Vita shade match
- Non-sticky
- Fluoride slow release and natural fluorescence

A1 FLS552
A2 FLS550
A3 FLS553
A3.5 FLS551
A4 FLS554
Replacement Tips FLS580



DD Code	Product	Light Cure	Use with Fixed Retainers	Use with Aligner attachments
2A8834	Bond Aligner Adhesive with Tips	✓		✓
FBE345	Flow Tain with Tips	✓	✓	
FBE396	Flow Tain L.V. with Tips	✓	✓	
FBE379	L.C.R. Paste in Push Syringe	✓	✓	
FBE421	Light Cure Retainer Paste Preloaded Tips	✓	✓	
FBE430	TKO Push Syringe Pink Shade	✓		✓
2A8933	GoTo® Adhesive Paste in Push Syringe	✓	✓	✓
2A8932	GoTo® Adhesive Paste in Tips	✓	✓	✓
FLS550	Starflow A2	✓	✓	✓

Essix
Retainer Sheets

A+ Retainer Sheets

			Square 5"x5"	
.080" 2mm	120mm Diameter	11081 JLT243	.030 .75mm 10035-50	JLT245
.080" 2mm	125mm Diameter	11080 JLT244	.040 1mm 10045-50	JLT246
			.060 1.5mm 10065	JLT241
			.080 2mm 10085	JLT242

C+ Retainer Sheets

			Square 5"x5"	
.040" 1mm	120mm Diameter	IC120-50 JLT260	.040" 1mm IC500-50	JLT263
.040" 1mm	125mm Diameter	IC125-50 JLT262		

Plus Retainer Sheets

			Square 5"x5"	
.040" 1mm	120mm Diameter	IAPL40C120 JLT265	.040" 1mm IAPL40S5	JLT267
.040" 1mm	125mm Diameter	IAPL40C125 JLT266		

Ace Retainer Sheets

			Square 5"x5"	
030" .75mm	125mm	JLT248	.040" 1mm IA450-50	JLT231
030" .75mm	120mm	JLT249	.030" .75mm IA350-50	JLT247
040" 1mm	125mm	JLT250		
040" 1mm	120mm	JLT251		



Choosing the Right Plastic

Essix	Aligners Standard	Aligners Bruxers	Retainers Standard	Retainers Bruxers	Bruxism Appliances	Temporary Bridges	Accepts Acrylics/ Bonding Agents	Bite Planes
A+	✓		✓		✓	✓	✓	✓
C+	✓	✓		✓				✓
Plus			✓	✓	✓	✓		
Ace	✓		✓			✓	✓	

Medesy
**BeeBee Scissors
Curved 110mm**

Saw edged.
2A5941



Medesy
**BeeBee Scissors
Straight 110mm**

Saw edged.
2A5940



Medesy
**Straight Tungsten
Carbide 110mm**

Saw edged.
2A5942



SilverMotion®
Distalizer

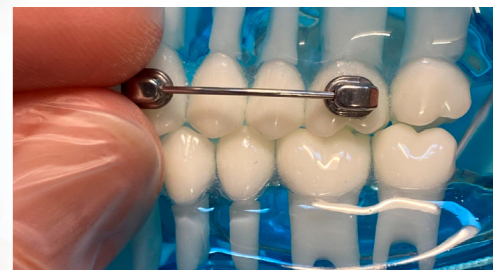
One Size fits all
**The Elegant Way
to a Perfect Occlusion**



Measure the exact length, then shorten to the mark.



Bond the loose button onto the molar.



Insert the SilverMotion® Distalizer into the button and bond it onto the cuspid.

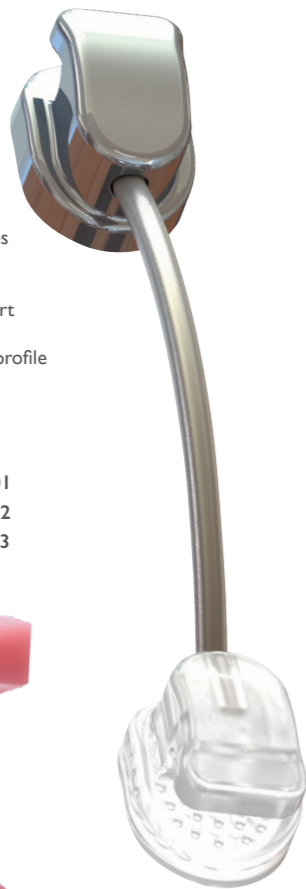
Silver Motion® Distalizer

Aligner Accessories

SilverMotion® Distalizer

- One size fits all
- Reduced treatment times
- Almost invisible due to its small size
- Treatment of bilateral and unilateral cases as well as mixed-dentition patients
- Hygienic – easy to clean
- Clearly visible enhancements after a short period of time
- Highest wearing comfort due to its flat profile
- No lab work necessary
- Treatment of Class II and Class III cases
- Prevention of extractions

SilverMotion Distalizer Clear	SMD001
SilverMotion Distalizer	SMD002
SilverMotion Typodont	SMD003



Your advantages at a glance:

One Size Fits All

The SilverMotion® Distalizer can be cut to the exact length. This makes stock keeping of different sizes unnecessary.

Aligner compatible

The SilverMotion® Distalizer is ideal for pretreatment prior to Aligner progression.

Reduced Treatment Time

Correcting the molar occlusion at the start of case progression will reduce the time in Aligner or Fixed treatment, keeping patient compliance to the optimum.

Patient Comfort

Thanks to its flat and elegant design the SilverMotion® Distalizer ensures excellent compliance and comfort to your patients.

Unobtrusive design

Almost Invisible in the lateral area.

Perfectly hygienic

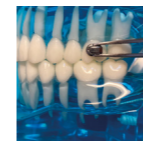
The SilverMotion® Distalizer can be thoroughly cleaned by using a normal tooth brush.

Increased patient motivation

Visible tooth movement in a short time period ensures good patient compliance.

Innovative

Due to its innovative design, malfunctions or breaks are avoided, which are caused by complex mechanical designs of comparable Class II devices. No Laboratory Fabrication.



Simple Fabrication

1. Simple Fabrication:

Cut the SilverMotion® Distalizer to the precise length. Bond the loose button onto the molar. Insert the SilverMotion® Distalizer into the button and bond it onto the mesial third of the cuspid (or, if needed, first premolar).

2. Mandibular:

Bond a button or buccal tube onto the lower first molar. By using a stable retainer in the lower jaw, protrusion of lower incisors is avoided. Depending on the preference of the orthodontist.

3. Activation:

Activate the SilverMotion® Distalizer with a Class II elastic configuration Upper 3's to Lower 6's.



G&H Enchanted Collection

Intra Oral Patient Elastics.
50 bags each containing 100 elastics.

- Elastic Force Activation
- Clear and simple sizing
- Natural latex rubber
- 3 year shelf-life on all elastics

1/4" 6.5oz Pegasus F1
256403
3/16" 8.5oz Gnome F2
256577



Aligner Accessories Collection

Specialist Helpdesk
orthodontics@ddgroup.com
01274 581 058

Please contact DD Sales for all orders and enquiries
0800 585 586

Catalogue Code: YSZ925

www.ddgroup.com