

# OrthoDontic Collection



## Orthodontics at DD

At DD we have enhanced the Orthodontic portfolio of products to meet the needs of this ever growing market.

It has never been a better time to incorporate Orthodontic treatment into your Practice. Patients are now actively seeking treatment in the current climate and with many discreet options available it is one of the fastest growing areas of Dentistry. Non-AGPs is now the norm for Orthodontic treatment; with very little downtime for dental surgeries which can only make a more pleasurable experience for you and your patients.\*

DD are very much at the forefront of specialist products for the profession, and with the plethora of treatments offered from simple removable appliances through to materials for Fixed Orthodontics, Aligners, Lingual Ortho, TADS, and Orthognathic Surgery we are here to deliver what you need.

The Orthodontic Collection is only a fraction of what is available and is ever evolving. We have a sister publication The Aligner Accessories Collection ref YSZ925 which is an adjunct for all Aligner Type Treatments.

We hope to make your buying process for all your materials as easy as possible. Specialist impartial advice is only a call or email away. Enjoy!



John Lancaster  
Head of Orthodontics

\*We recommend you always seek the most current guidance from the British Orthodontic Society.



This collection is interactive. Just click the product code below each item to shop and add to your basket!

## Quick reference guide:

Click the page number to go to each section

Brackets	Page 4	IPR	Page 59
Buccal Tubes	Page 9	Photography	Page 67
Genius Self Ligating System	Page 10	Photography & Bonding	Page 68
Silver Motion Distalizer	Page 14	Patient Care	Page 72
Archwires	Page 16	Instruments	Page 78
Wire Products & Attachments	Page 27	Organisers	Page 95
Eruption Appliances	Page 32	Diagnostic	Page 96
Auxiliaries & Springs	Page 33	Curing Lights	Page 97
Elastomerics	Page 35	Lab Products	Page 98
Bonding & Adhesives	Page 42	Small Surgery Equipment	Page 100
Impression	Page 51	Six Month Smiles	Page 102
Finishing	Page 56	Instrument Sharpening Service	Page 104
Lingual Retention	Page 58		

Discover our Ortho**D**ontics range

## UnoDent Professional Brackets

Our professional brackets provide unmatched strength, slot accuracy and polished surface smoothness - ensuring free sliding archwires with zero wire notching. Available in MBT & Roth .022 slot technique systems.

- MIM manufacturing process
- Strong slot and hooks
- Accurate archwire slot
- Smooth finish - Reduced Friction
- Colour coded markings - easy quadrant identification
- 80-gauge mesh base - excellent retention
- Ample under tie-wing area - easy ligature placement
- Available with gingivally offset lower bicuspids and incisors on a larger offset bonding pad to prevent debonding due to occlusal interference



Single Patient Kits	MBT	Roth
U&L 5-5 hooks on 3, 4, 5	UOB056	UOB025
U&L 5-5 hooks on 3's	UOB057	UOB026
U&L 6-6 Off-set pads & hooks on 3, 4, 5	UOB058	
U&L 6-6 hooks on 3's, LP Tubes	UOB100	
U&L 6-6 hooks on 3's Offset Base, LP Tubes	UOB101	

	MBT Upper		Roth Upper		MBT Lower		Roth Lower	
	Left	Right	Left	Right	Left	Right	Left	Right
Central	UOB027	UOB035	UOB000	UOB007	Anterior UOB043		UOB014	
Lateral	UOB028	UOB036	UOB001	UOB008	Cuspid	UOB044	UOB048	
Cuspid	UOB029	UOB037			Cuspid - hook	UOB045	UOB049	UOB015 UOB018
Cuspid - hook	UOB030	UOB038	UOB002	UOB009	1st Bicuspid	UOB052	UOB053	UOB021 UOB022
1st Bicuspid	UOB031	UOB039	UOB003	UOB010	1st Bicuspid - Distal hook	UOB046	UOB050	UOB016 UOB019
1st Bicuspid - Mesial hook	UOB032	UOB040	UOB004	UOB011	2nd Bicuspid	UOB054	UOB055	UOB023 UOB024
2nd Bicuspid	UOB033	UOB041	UOB005	UOB012	2nd Bicuspid - Distal hook	UOB047	UOB051	UOB017 UOB020
2nd Bicuspid - Mesial hook	UOB034	UOB042	UOB006	UOB013				

Lower MBT Offset Pads	Left	Right
Anterior	UOB102	
1st Bicuspid	UOB103	UOB104
1st Bicuspid - Mesial hook	UOB075	UOB078
2nd Bicuspid	UOB077	UOB080
2nd Bicuspid - Mesial hook	UOB076	UOB079



Bands are available on request



View our molar bands. Just scan the QR code with your phone or click to view.

### UnoDent Stealth C

Comfort and aesthetics not achieved by other ceramic brackets. The UnoDent Stealth C is almost invisible. UnoDent Stealth C brackets experience 41% less friction than conventional sapphire brackets. Less friction optimises tooth movement and shortens overall treatment time.



**Triple bevelled archwire slot**  
Optimises mechanical sliding and minimises arch bending and crimping.

**Lower profile .072"**  
Anatomically designed fins minimise contact with soft tissue.

**Smooth, rounded hook and edges**  
Increased patient comfort and secure grip of elastics.

**Twin design**  
Allows for standard and figure of eight ligation options.

MBT Upper 022	Left	Right	MBT Lower 022	Left	Right
Central	UOB211	UOB210	Lower Anterior	UOB221	UOB221
Lateral	UOB213	UOB212	Cuspid - Hook	UOB225	UOB224
Cuspid - Hook	UOB217	UOB216	Cuspid - Hook 0 Torque	UOB223	UOB222
Cuspid - Hook 0 Torque	UOB215	UOB214	1st Bicuspid	UOB226	UOB226
1st Bicuspid	UOB218	UOB218	1st Bicuspid - Hook	UOB228	UOB227
1st Bicuspid - Hook	UOB220	UOB219	2nd Bicuspid	UOB229	UOB229
2nd Bicuspid	UOB218	UOB218	2nd Bicuspid - Hook	UOB231	UOB230
2nd Bicuspid - Hook	UOB220	UOB219			

## Precision. Speed. Control. All in one Aesthetic Appliance.

### UnoDent Stealth CSL

The PolySapphire® Stealth-Ligating bracket system is designed and engineered to perform to your highest expectations. Advanced manufacturing techniques and state-of-the-art design provide the performance and control needed for exceptional results.



**Three Finger Mechanism**  
Secures the archwire in the slot while preventing mesial-distal movement.

**Nickel-Titanium Tension Clip**  
Exceptional memory properties ensure reliable operation for the entire length of treatment.

**Advanced Ceramic Material**  
Superior aesthetic appearance, strength and fracture resistance.

**Triple X Base**  
Superior mechanical bonding with reliable and consistent debonding.

MBT Upper 022	Left	Right	MBT Lower 022	Left	Right	Patient Kits MBT 022
Central	UOB311	UOB310	Lower Anterior	UOB321	UOB321	Upper & Lower 5-5 Hks 3 UOB300
Lateral	UOB313	UOB312	Cuspid - Hook	UOB325	UOB324	Upper 5-5 Hks 3 UOB301
Cuspid - Hook	UOB317	UOB316	Cuspid - Hook 0 Torque	UOB323	UOB322	Lower 5-5 Hks 3 UOB302
Cuspid - Hook 0 Torque	UOB315	UOB314	1st Bicuspid	UOB326	UOB326	Upper 3-3 Hks 3 UOB303
1st Bicuspid	UOB318	UOB318	1st Bicuspid - Hook	UOB328	UOB327	Lower 3-3 Hks 3 UOB304
1st Bicuspid - Hook	UOB320	UOB319	2nd Bicuspid	UOB329	UOB329	
2nd Bicuspid	UOB318	UOB318	2nd Bicuspid - Hook	UOB331	UOB330	
2nd Bicuspid - Hook	UOB320	UOB319				

### UnoDent Stealth MSL

Discover Stealth MSL fully interactive metal self-ligating bracket with a Nickel-Titanium spring clip.

- The NiTi clip delivers continuous and consistent forces throughout the entire length of treatment
- Full slot control ensures full rotational control
- Easy Operation allows for faster adjustments
- Low profile for patient comfort



MTB Upper 022	Left	Right
Central	UOB411	UOB410
Lateral	UOB413	UOB412
Cuspid - Hook	UOB415	UOB414
1st Bicuspid	UOB417	UOB416
1st Bicuspid - Hook	UOB419	UOB418
2nd Bicuspid	UOB421	UOB420
2nd Bicuspid - Hook	UOB423	UOB422

MTB Lower 022	Left	Right
Lower Anterior	UOB424	UOB424
Cuspid - Hook	UOB426	UOB425
1st Bicuspid	UOB428	UOB427
1st Bicuspid - Hook	UOB430	UOB429
2nd Bicuspid	UOB432	UOB431
2nd Bicuspid - Hook	UOB434	UOB433

#### Easy Operation

No special tool needed.

#### Tie Wing

Ample undercuts for chains or ties.

#### Full Slot Width

For optimal rotational control.

#### Mechanical Base

Laser technology for superior bonding with reliable and predictable debonding.

#### Patient Kits MBT 022

Upper & Lower 5-5 Hks 3	UOB400
Upper 5-5 Hks 3	UOB401
Lower 5-5 Hks 3	UOB402

### UnoDent Professional Buccal Tubes

Features a funnel entry system for easy wire introduction and a low profile shape. Pack 10

	MBT 022 Slot	Roth 022 Slot
UL6	UOB063	UOB059
UR6	UOB064	UOB060
LL6	UOB065	UOB061
LR6	UOB066	UOB062



### UnoDent Professional Low Profile Buccal Tubes

- Ultra Low Profile Design - LP Buccal Tubes Offer maximum comfort to the patient
- MIM manufacturing process
- Funneled entrance assists in easy wire insertion

- 80-gauge mesh base with anatomical contour ensures precise fit and excellent bond strength
- Permanent numbered quadrant identification marking
- Colour coded markings for each quadrant Pack 10

	MBT 022 Slot	Roth 022 Slot
UL6	UOB071	UOB067
UR6	UOB072	UOB068
LL6	UOB073	UOB069
LR6	UOB074	UOB070
UL7	UOB091	UOB095
UR7	UOB092	UOB096
LL7	UOB093	UOB097
LR7	UOB094	UOB098



## Genius Crystal Advanced Passive Self Ligating System

### Opening/Closing Mechanism

- Open with Genius Driver for greater comfort
- Close with light finger pressure
- Audible click ensures closing

### Patient Comfort

- Bracket surface are designed with rounded edges

### Reduced Friction

- Slot's design with rounded corners

### Superior Base Design

- Reliability of 80 gauge mesh
- Well contoured for easier placement
- Proprietary Base Texture process to increase bond reliability
- Easy debonding and cleaning-up



### Full Torque Rotation Control

- Slot precision
- Wire coverage increase
- Secured opening system

### Proprietary Aluminium Oxide Formulation

- Creates the best colour that matches the natural tooth colour
- Stain Resistance
- Smaller Grain Size structure to increase the material's strength and transparency

### Single Piece CIM Construction

- Precise prescription
- Full aesthetic material without metal slot or metal clips

### Tie Wing

- Ample under-tiewing area for easy engagement of chains and ligatures

### Hooks

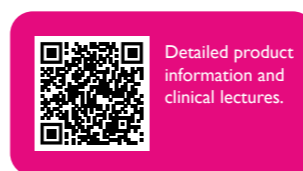
- Fully integrated hooks on cuspids

### Erasable Face painting for ideal placement

.022	Torq.	Ang.	Left	Right
Central	+14°	+5°	214910	214911
Lateral	+6°	+9°	214912	214913
Cuspid - Hook	+3°	+5°	214914	214915
Bicuspid	-7°	+2°	214916	214917

Mandibular Arch	Torq.	Ang.	Left	Right
Lower Anterior	-6°	0°	214920	214921
Cuspid - Hook	+3°	+5°	214922	214923
1 <sup>st</sup> Bicuspid	-7°	+2°	214924	214925
2 <sup>nd</sup> Bicuspid	-7°	+2°	214926	214927

**Typodont**  
2A9901



Detailed product information and clinical lectures.

## Genius Crystal Advanced Passive Self Ligating System Single Patient Kits

Upper & Lower 5-5 Hks 3	214900
Upper 5-5 Hks 3	214901
Upper 3-3 Hks 3	214902
Lower 3-3 Hks 3	214903

## Genius System Protocol Euro II/Universal Archform

014 Thermal	2A9910 / 2A9911
018 Thermal	2A9912 / 2A9913
14x25 Thermal	2A9916 / 2A9917
17x25 Stainless Steel	2A9924
19x25 Stainless Steel	2A9925
19x25 Beta Titanium	2A9926



Genius Driver Double Metal & Ceramic 214980  
Genius Crystal Driver & Wire Engager 0.8mm 214982

### Genius Crystal Advanced Genius 2 Metal

Maxillary Arch	Torq.	Ang.	Left	Right
Central	+14°	+5°	214810	214811
Lateral	+6°	+9°	214812	214813
Cuspid - with hook	+6°	+5°	214814	214815
1 <sup>st</sup> /2 <sup>nd</sup> bicuspid - Hook	-7°	+2°	214816	214817
1 <sup>st</sup> /2 <sup>nd</sup> bicuspid - Hook - Gingival Offset	-7°	+2°	214818	214819

Mandibular Arch	Torq.	Ang.	Left	Right
Lowers anteriors	-6°	0°	214820	214821
Cuspid - with hook	+6°	+5°	214822	214823
1 <sup>st</sup> Bicuspid - Gingival Offset	-11°	+4°	214824	214825
1 <sup>st</sup> Bicuspid - Hook - Gingival Offset	-16°	+4°	214826	214827
2 <sup>nd</sup> Bicuspid - Gingival Offset	-11°	+4°	214828	214829
2 <sup>nd</sup> Bicuspid - hook - Gingival Offset	-16°	+2°	214830	214831



Nickel Free



Detailed product information and clinical lectures.



MIM Manufactured guarantees exact dimensions with built in prescriptions



Easy Opening with Genius Driver - Reduced Chairsides Time



Increased Gate Width - Better rotational control



Patient Comfort - Low Profile, Shorter Hooks & Rounded Brackets

### Genius 2 Metal Passive Self Ligating System Single Patient Kits

Single Patient Kits	Code
Upper & Lower 5-5 Hks 3, 4, 5	214800
Upper & Lower 6-6 Hks 3, 4, 5	214801
Upper & Lower 5-5 Hks 3	214802



Genius Driver Double Metal & Ceramic	214980
Genius Metal Driver & Wire Engager 1.2mm	214981

### Genius 2 Metal Passive Self Ligating System Self-Ligating Bondable Tubes

Maxillary Arch	Torq.	Ang.	Rotation	Code
UL6	-17°	0°	6°	214840
UR6	-17°	0°	6°	214841

Mandibular Arch	Torq.	Ang.	Rotation	Code
LL6	-20°	0°	0°	214844
LR6	-20°	0°	0°	214845

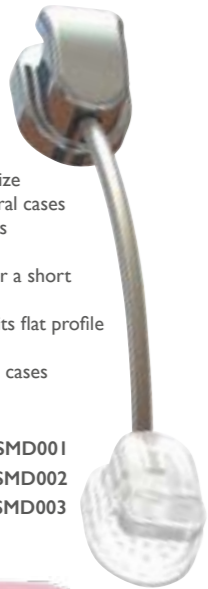
### Self-Ligating Bondable Tubes

Maxillary Arch	Torq.	Ang.	Rotation	Code
UL7	-18°	0°	3°	214842
UR7	-18°	0°	3°	214843
LL7	-18°	0°	3°	214846
LR7	-18°	0°	3°	214847

## SilverMotion® Distalizer

- One size fits all
- Reduced Treatment Times
- Almost invisible due to its small size
- Treatment of bilateral and unilateral cases as well as mixed-dentition patients
- Hygienic – easy to clean
- Clearly visible enhancements after a short period of time
- Highest wearing comfort due to its flat profile
- No lab work necessary
- Treatment of Class II and Class III cases
- Prevention of extractions

SilverMotion Distalizer Clear	SMD001
SilverMotion Distalizer	SMD002
SilverMotion Typodont	SMD003



### Your advantages at a glance:

#### One Size Fits All

The SilverMotion® Distalizer can be cut to the exact length. This makes stock keeping of different sizes unnecessary.

#### Aligner compatible

The SilverMotion® Distalizer is ideal for pretreatment prior to Aligner progression.

#### Reduced Treatment Time

Correcting the molar occlusion at the start of case progression will reduce the time in Aligner or Fixed treatment, keeping patient compliance to the optimum.

#### Patient Comfort

Thanks to its flat and elegant design the SilverMotion® Distalizer ensures excellent compliance and comfort to your patients.

#### Unobtrusive design.

Almost Invisible in the lateral area.

#### Perfectly hygienic

Perfectly hygienic, the SilverMotion® Distalizer can be thoroughly cleaned by using a normal tooth brush.

#### Increased patient motivation

Visible tooth movement in a short time period ensures good patient compliance.

#### Innovative

Due to its innovative design, malfunctions or breaks are avoided, which are caused by complex mechanical designs of comparable Class II devices. No Laboratory Fabrication.

### Simple Fabrication

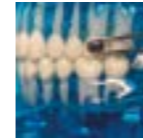
#### 1. Simple Fabrication:

Cut the SilverMotion® Distalizer to the precise length. Bond the loose button onto the molar. Insert the SilverMotion® Distalizer into the button and bond it onto the mesial third of the cuspid (or, if needed, first premolar).



#### 2. Mandibular:

Bond a button or buccal tube onto the lower first molar. By using a stable retainer in the lower jaw, protrusion of lower incisors is avoided. Depending on the preference of the orthodontist.



#### 3. Activation:

Activate the SilverMotion Distalizer with a Class II elastic configuration Upper 3's to Lower 6's.



## G&H Enchanted Collection

Intra Oral Patient Elastics.  
50 bags each containing 100 elastics.

- Elastic Force Activation
  - Clear and simple sizing
  - Natural latex rubber
- 1/4" 6.5oz Pegasus F1 256403  
3/16" 8.5oz Gnome F2 256577





### G&H G4 Nickel Titanium

G4 Niti Super Elastic provides lower initial load forces and increased residual forces as full shape recovery progresses. Teeth move further and faster.  
Pack 25



Round	Upper Europa	Lower Europa	Rectangular	Upper Europa	Lower Europa
012	213721	213676	14x25	213704	213678
014	213684	213677	16x22	213725	213719
016	213722	213679	17x25	213685	213681
018	213723	213682	18x25	213706	213683
020	213718	213724	19x25	213726	213720
			20x20	213733	213701
			21x25	213707	213703

### G&H M5 Thermal Copper Nickel Titanium

Thermal heat activated. Precise temperature transformation at 35°C. Gentler loading forces for easier engagement. Consistent and predictable tooth moving forces.  
Pack 25



Round	Upper Europa	Lower Europa	Rectangular	Upper Europa	Lower Europa
012	213799	213794	16x16	213669	213796
014	213771	213765	16x22	213800	213766
016	213772	213795	17x25	213801	213767
018	213773	213797	18x18	213755	213750
020	213802	213798	18x25	213774	213768
			19x25	213775	213769
			20x20	213776	213770
			21x25	224226	213751



### G&H G4 Nickel Titanium Reverse Curve

Reverse Curve wires provide excellent counter forces to achieve bite modifications quickly and efficiently, while also improving archform integrity.  
Pack 10



Round	Upper	Lower	Rectangular	Upper	Lower
012	225270	225282	16x22	225275	225287
014	225271	225283	17x25	225276	225288
016	225272	225284	18x18	225277	225289
018	225273	225285	18x25	225278	225290
020	225274	225286	19x25	225279	225291
			20x20	225280	225292
			21x25	225281	225293

Damon arch forms available for most wire types

### G&H S304 Stainless Steel

Only 304V medical grade stainless steel wire is used in forming these archwires. G&H uses state-of-the-art forming equipment which ensures product integrity, consistent performance characteristics, and precise archforms.  
Pack 25



Round	Upper Europa	Lower Europa	Rectangular	Upper Europa	Lower Europa
012	213902	213901	16x22	213900	213893
014	213903	213864	17x25	213870	213608
016	213838	213865	18x25	213871	213868
018	213904	213866	19x25	213872	213869
020	213905	213867	21x25	213839	213837

### G&H Stainless Steel Posted

Straight post archwires facilitate retraction. Class II engagement, and segmented force application as desired. Pack 10



19x25	Europa	19x25	Europa
22mm	213834	34mm	213884
24mm	213881	36mm	213862
26mm	213860	38mm	213885
28mm	213861	40mm	213863
30mm	213882	42mm	213880
32mm	213883		

Other sizes available

### G&H TitanMoly Titanium Molybdenum Alloy

Smooth surface finish and mechanically polished Beta Titanium (TMA) Alloy Archwires. Accepts adaptation bends without breaking. Provides nearly twice the working range of stainless steel with 45% less deflection force and superior recovery. Use for final finishing. Nickel Free. Pack 10



Round	Upper	Lower	Rectangular	Upper	Lower
016	213645	213652	16x22	213646	213642
018	213650	213651	17x25	213647	213673
			18x25	213648	213644
			19x25	213845	213846
			21x25	213649	213847

### G&H Stainless Steel Coaxial Wire (6 stranded)

TitanMoly Titanium Molybdenum Alloy 45% less deflection force of S/S Use for detailing and finishing Nickel Free. Pack 10

14" Straight Lengths

0155	226227
0175	226228
0195	226229



### G&H G4 Nickel Titanium Tooth Coloured

Epoxy coated NiTi provides lower initial load forces and increased residual forces as full shape recovery progresses. Teeth move farther and faster. Pack 10



Round	Upper Europa	Lower Europa	Rectangular	Upper Europa	Lower Europa
012	200039	200051	16x16	213705	229406
014	229407	229401	17x25	229429	200057
016	229408	229402	18x18	200046	200085
018	200042	229400	18x25	200047	200086
020	200043	200055	19x25	200048	229414
			20x20	200049	200061
			21x25	200050	200062

Damon arch forms available for most wire types. Additional Wires available at [DDgroup.com](http://DDgroup.com)

### G&H S304 Stainless Steel Tooth Coloured

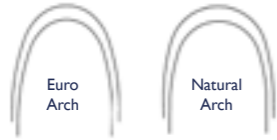
304V Stainless Steel Epoxy Coated Archwires ensure an aesthetic archwire progression which follow on from Nickel Titanium. Pack 25



Round	Upper Europa	Lower Europa	Rectangular	Upper Europa	Lower Europa
014	200063	200074	16x22	200067	200078
016	200064	200075	17x25	200068	200079
018	200065	200076	18x18	200069	200080
020	200066	200077	18x25	229418	200081
			19x25	200071	229413
			20x20	200072	200083
			21x25	200073	200084

## UnoDent Professional NiTi

Pack 10



Round	Upper Natural	Upper Euro	Lower Natural	Lower Euro
012	UOW111	UOW121	UOW116	UOW126
014	UOW112	UOW122	UOW117	UOW127
016	UOW113	UOW123	UOW118	UOW128
018	UOW114	UOW124	UOW119	UOW129
020	UOW115	UOW125	UOW120	UOW130

Rectangular	Upper Natural	Upper Euro	Lower Natural	Lower Euro
16x16	UOW131	UOW147	UOW139	UOW155
16x22	UOW132	UOW148	UOW140	UOW156
17x22	UOW133	UOW149	UOW141	UOW157
17x25	UOW134	UOW150	UOW142	UOW158
18x22	UOW135	UOW151	UOW143	UOW159
18x25	UOW136	UOW152	UOW144	UOW160
19x25	UOW137	UOW153	UOW145	UOW161
21x25	UOW138	UOW154	UOW146	UOW162

## UnoDent Professional NiTi

Individually Wrapped Pack 10



Round	Upper Natural	Upper Euro	Lower Natural	Lower Euro
012	UOW170	UOW180	UOW175	UOW185
014	UOW171	UOW181	UOW176	UOW186
016	UOW172	UOW182	UOW177	UOW187
018	UOW173	UOW183	UOW178	UOW188
020	UOW174	UOW184	UOW179	UOW189

Rectangular	Upper Natural	Upper Euro	Lower Natural	Lower Euro
16x16	UOW266	UOW282	UOW274	UOW290
16x22	UOW267	UOW283	UOW275	UOW291
17x22	UOW268	UOW284	UOW276	UOW292
17x25	UOW269	UOW285	UOW277	UOW293
18x22	UOW270		UOW278	
18x25	UOW271	UOW287	UOW279	UOW295
19x25	UOW272	UOW288	UOW280	UOW296
20x20		UOW286		UOW294
21x25	UOW273	UOW289	UOW281	UOW297

## UnoDent Professional Heat Activated NiTi

Pack 10



Round	Upper Natural	Upper Euro	Lower Natural	Lower Euro
012	UOW210	UOW220	UOW215	UOW225
014	UOW211	UOW221	UOW216	UOW226
016	UOW212	UOW222	UOW217	UOW227
018	UOW213	UOW223	UOW218	UOW228
020	UOW214	UOW224	UOW219	UOW229

Rectangular	Upper Natural	Upper Euro	Lower Natural	Lower Euro
16x16	UOW230	UOW250	UOW238	UOW258
16x22	UOW231	UOW251	UOW239	UOW259
17x22	UOW232	UOW252	UOW240	UOW260
17x25	UOW233	UOW253	UOW241	UOW261
18x22	UOW234	UOW254	UOW242	UOW262
18x25	UOW235	UOW255	UOW243	UOW263
19x25	UOW236	UOW256	UOW244	UOW264
21x25	UOW237	UOW257	UOW245	UOW265

## UnoDent Professional NiTi Reverse Curve

Pack 10



Round	Upper	Lower
012	UOW326	UOW331
014	UOW327	UOW332
016	UOW328	UOW333
018	UOW329	UOW334
020	UOW330	UOW335

Rectangular	Upper	Lower
16x16	UOW310	UOW318
16x22	UOW311	UOW319
17x22	UOW312	UOW320
17x25	UOW313	UOW321
18x22	UOW314	UOW322
18x25	UOW315	UOW323
19x25	UOW316	UOW324
21x25	UOW317	UOW325

UnoDent Professional  
Stainless Steel

Pack 10



Round	Upper Natural	Upper Euro	Lower Natural	Lower Euro
012	UOW001	UOW021	UOW006	UOW026
014	UOW002	UOW022	UOW007	UOW027
016	UOW003	UOW023	UOW008	UOW028
018	UOW004	UOW024	UOW009	UOW029
020	UOW005	UOW025	UOW010	UOW030

Rectangular	Upper Natural	Upper Euro	Lower Natural	Lower Euro
16x16	UOW041	UOW071	UOW047	UOW077
16x22	UOW042	UOW072	UOW048	UOW078
17x25	UOW043	UOW073	UOW049	UOW079
18x25	UOW044	UOW074	UOW050	UOW080
19x25	UOW045	UOW075	UOW051	UOW081
21x25	UOW046	UOW076	UOW052	UOW082

UnoDent Professional  
Stainless Steel

Individually Wrapped  
Pack 10



Round	Upper Natural	Upper Euro	Lower Natural	Lower Euro
012	UOW011	UOW031	UOW016	UOW036
014	UOW012	UOW032	UOW017	UOW037
016	UOW013	UOW033	UOW018	UOW038
018	UOW014	UOW034	UOW019	UOW039
020	UOW015	UOW035	UOW020	UOW040

Rectangular	Upper Natural	Upper Euro	Lower Natural	Lower Euro
16x16	UOW055	UOW085	UOW061	UOW091
16x22	UOW056	UOW086	UOW062	UOW092
17x25	UOW057	UOW087	UOW063	UOW093
18x25	UOW058	UOW088	UOW064	UOW094
19x25	UOW059	UOW089	UOW065	UOW095
21x25	UOW060	UOW090	UOW066	UOW096

Archwires - TMA

Titanium  
Molybdenum Alloy

Pack 10



Round	Upper Euro	Lower Euro
016	UOW525	UOW528
018	UOW526	UOW529
020	UOW527	UOW530

Rectangular	Upper Natural	Upper Euro	Lower Natural	Lower Euro
16x22	UOW336	UOW342	UOW339	UOW345
17x25	UOW337	UOW343	UOW340	UOW346
19x25	UOW338	UOW344	UOW341	UOW347



## Archwires - Euro II

UnoDent Professional ortho archwires in the Euro II archform. Damon\* compatible and for all self ligation techniques is now available in Heat Activated Copper Niti with and without stops, Stainless Steel and TMA ensuring your practice has the correct wire at every stage of treatment. Individually-wrapped wires (Uno Packs) are delivered in autoclavable envelopes.

### UnoDent Professional Pre-stopped Copper Niti

Individually  
Wrapped  
Pack 10



Round - Euro II

Round	Code
013	UOW505
014	UOW506
016	UOW507
018	UOW508

Rectangular - Euro II

Rectangular	Code
14x25	UOW509
16x25	UOW510
18x25	UOW511

### UnoDent Professional Copper Niti

Individually  
Wrapped  
Pack 10



Round - Euro II

Round	Code
013	UOW512
014	UOW513
016	UOW514
018	UOW515

Rectangular - Euro II

Rectangular	Code
14x25	UOW516
16x25	UOW517
18x25	UOW518

### UnoDent Professional Stainless Steel

Individually  
Wrapped  
Pack 10



Round - Euro II

Round	Code
018	UOW500
020	UOW501

Rectangular - Euro II

Rectangular	Code
16x22	UOW502
17x25	UOW503
19x25	UOW504



### UnoDent Professional Titanium Molybdenum Alloy

Individually  
Wrapped  
Pack 10



Round - Euro II

Round	Code
016	UOW519
018	UOW520
020	UOW521

Rectangular - Euro II

Rectangular	Code
16x22	UOW522
17x25	UOW523
19x25	UOW524

\*Damon is a registered trademark of Ormco and does not imply endorsement by the manufacturer.

## Albaflex aesthetic archwires

A new coated wire has been developed for orthodontics. Manufactured from PEEK thermoplastic composite polymer to produce an unrivalled aesthetic wire for orthodontics. Non staining coating. Very resistant to wear, will not split or chip in treatment. Coated NiTi and Stainless steel archwires. Non-porous. Bio-Compatible. Will take 1<sup>st</sup>, 2<sup>nd</sup> & 3<sup>rd</sup> order bends without deformation to the coating. Low friction & resists plaque formation. No more replacing worn archwires.

### Albaflex Stainless Steel Aesthetic Wires

Pack 10

Round	Core diameter	Upper	Lower
017	013	229489	229495
020	016	229497	229496

Rectangular	Core diameter	Upper	Lower
17x17	013x013	229490	229498
17x25	013x021	229484	229493
20x28	016x016	229482	229488

### Albaflex Super Elastic NiTi Wires

Pack 10

Round	Core diameter	Upper	Lower
017	013	229480	229485
020	016	229483	229486

Rectangular	Core diameter	Upper	Lower
17x17	013x013	229491	229500
20x20	016x016	229487	229492

### Albaflex Aesthetic Spacer Tube

Use as a tooth coloured  
space maintainer. Pack 3

Size	Code
036x055	229499



See the impressive Coating resistance on Albaflex aesthetic archwires. Just scan the QR code with your phone

## Australian Stainless Steel Archwires

These stainless steel archwires are manufactured by A.J.Wilcock and preformed by G&H® Wire Company to fine tolerances and have consistently square, accurately-made edges for precise torque control. Arches have mid-line markings to identify upper and lower arches. Ideal for bite opening and where high resilience is required. Australian wire spools also available.

### A.J.Wilcock Australian Special Plus Steel Trueform I Wires

25ft Spool



Round	Upper	Lower
014	213630	213628
016	213631	213627
018	213632	213607
020	213633	213849
022	213634	213629



### OrthoTechnology Archwire Organiser

Archwire holder with cover.  
222503



### G&H Archwire Marker Pencils

Push-button dispenses one pencil on demand. Not water soluble. Single use. Each.

Dispenser	213603
Red Pack 100	700609
White Pack 100	700612



## Kobayashi Ligatures

Provides an auxiliary hook that can be added to any bracket just by tying in the archwire, preformed and available in long or short length.

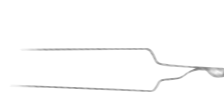
### G&H Kobay Hook Long

Kobayashi. Pack 100.  
012 235105  
014 235106



### UnoDent Professional Kobay Hook Long

Kobayashi. Pack 100.  
012 UOW408  
014 UOW409



### G&H Kobay Hook Short

Kobayashi. Pack 100.  
012 256413  
014 256454



### UnoDent Professional Kobay Hook Short

Kobayashi. Pack 100.  
012 UOW410  
014 UOW411



## Stainless Steel Ligatures

### G&H Ligature Ties Long

Stainless Steel. Pack 1000.  
008\* 200026  
010 256421



### UnoDent Professional Ligature Ties Long

Stainless Steel. Pack 1000.  
.010 UOW412  
.012 UOW413



### G&H Ligature Ties Short

Stainless Steel. Pack 500.  
008\* 256448  
010 256422



### UnoDent Professional Ligature Ties Short

Stainless Steel. Pack 400.  
.010 UOW414



## Aesthetic Ligatures

### G&H Ligature Ties Long

Tooth Coloured Stainless Steel ties.  
Preformed. Pack 100.

012 256482



### G&H Ligature Ties Short

Tooth Coloured Stainless Steel ties.  
Preformed. Pack 50.

012 229405



## Buttons

Buttons are available in various sizes and shapes, for lingual and labial application, curved or flat.

### G&H Lingual Buttons

Pack 20.

Hexagonal Contoured 200004  
Round Flat 272014



### UnoDent Professional Lingual Buttons

Pack 10.

Round Anterior UOB107  
Rectangular Posterior UOB106



### MEM Zeronik Lingual Micro Button

Super Low Profile. Allows composite to  
penetrate the mesh. Designed for use in  
aligner treatments. Nickel-free. Pack 10.  
272012



## Wire Products & Attachments

## Bondable Attachments

### Ortho Organizers Direct Bond Eyelets

Pack 10.

Rectangular Base 276003



### G&H Bondable Coil Eyelet

Round base with .036" inside  
diameter opening. Each.

276005



### G&H Bondable Cleat

A trusted robust button for  
anterior bonding. Sold individually.

Small 5.3mm cleat length 276007  
Large 8.1mm cleat length 276006  
Gull Wing 4.2mm 276008



### UnoDent Professional Bondable Power Arms

Bondable Power Arms for tooth  
translation and bodily movement.

Left 200134  
Right 200133

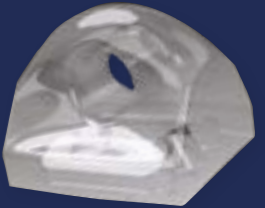


## Aesthetic Attachments

### G&H Composite Eyelet

Features a funnel entry system  
for easy wire introduction and a  
low profile shape. Opening will  
accommodate wires up to  
021 x 025. Pack 5.

276004



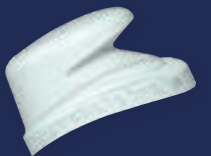
### Gestenco Freddy Ceramic Button

Pack 10.  
200245



### Gestenco Freddy Hook

Pack 10.  
200246



## Stops & Hooks

### Torque Gripper Torque Gripper Hooks

Once crimped, stops and hooks remain securely in place. Designed to work with any type or size of wire, from nickel titanium to stainless steel, 012 to 021x025. Pack 20.

4mm 200131  
6mm 200132



### Torque Gripper Torque Gripper Stops

Gripper hooks fit any archwire. Use to stop archwire sliding and causing wire pokes. Also use to activate coil springs. Crimp with blunt hardwire cutters or weingarts Width 2mm. Pack 100.

200130



### Ortho Technology Tooth Coloured Crimpable Hooks

- Split archwire opening
- Very comfortable to the patient
- Crimps securely to archwire
- Fits archwires up to 022x025

20 per pack.

3.3 mm 271052



### Dentos Crimpable Hook Plier

Each.  
303457



### G&H Surgical Crimpable Hook Open-Wall

1.25mm Ball. Pack 10.  
200033



### G&H Surgical Hook Slide-On

1.25mm Ball. Pack 10.  
Small  
Fits up to .022x.028 200036  
Large  
Fits up to .018x.025 200034



### G&H Crimpable Stops Open-Wall

Will fit round or rectangular wires .018" to .021" x .025". Pack 10.  
200015



### G&H Crimpable Stops

2mm Long. Pack 50.  
Large  
020 to 20x020 200014  
Small  
012 - 018 200016



## Bond Composite Auxiliaries Directly

- Molds are translucent and flexible to facilitate composite loading, curing, and disengagement
- Value priced to be single-use disposable

- The desired auxiliary is delivered, formed, and functional immediately
- A mold is filled with a light cure composite (Go To, TKO, or Flowtaint recommended) then delivered to the tooth and cured

### Habit Control

Inhibits thumbsucking and tongue thrust tendencies.

FBE436



### Cuspid Ramp

Bite opening ramp applied to the cuspid - 5.0 mm.

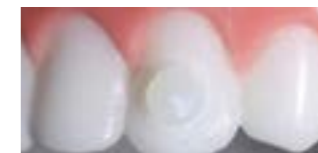
FBE435



### Button

Low profile and smooth. Facilitates elastomeric or ligature engagement.

FBE434



### Molar Tube

Molds a temporary tube. Accepts wire up to 020.

FBE439



### Molar Pad

Open the bite with posterior occlusal buildups. TKO or Ultra Band Lok recommended.

FBE438



### Bite Ramp

Bite opening turbo formed on the lingual of upper incisors. 2 sizes - 3.0 mm or 5.0 mm.

FBE432 / FBE433



### Wire Holder

Bonds lingual retainers or other wires consistently with a smooth and low profile finish. 2 sizes - 3.0 mm or 4.5 mm.

FBE440 / FBE441



### Reliamold Starter Kit

(2) Bonder Handles (108) Molds;  
FBE437  
Bonder Handle  
FBE431



## Eruption Appliances

### UnoDent Professional Caplin Stainless Steel Extrusion Hook

Direct bond mesh pad with low profile hook for elastomeric thread or steel ligature engagement. Pack 10. UOB108



### UnoDent Professional Eruption Chain Gold Eyelet

Perfect for bonding to impacted cuspids. Pack 10. UOB105



### Gestenco Gold Extrusion Hook Eyelet and Chain

24kt Gold Plated Extrusion Chain designed for bonding to surgically exposed canines. Gold plating to reduce allergic reaction. Low profile. Chain is 1 inch in length with approximately 20 small links. Inner diameter of the chain links are .022" allowing for wire engagement. Autoclavable 134-137°C NHS CSSD Compliant

- Extrusion Hook Gold 24 kt Chain Round 2A7821
- Extrusion Hook Gold 24 kt Chain Ovoid 2A7822
- Extrusion Hook Gold 24 kt Chain Square 2A7823
- Extrusion Hook Gold 24 kt Chain Caplin 2A7824



### Reliance Direct Bonding Composite & Chain

Direct bonding composite & chain for tooth exposure & extrusion. Each. Oval Pad attachment 2A8672 Round Pad Attachment 2A8673



Use Reliance University for all clinical procedures. Just scan the QR code with your phone or click to view.

### G&H G4 NiTi Open Coil Springs

G4™ Open coil springs open and maintain space gently and efficiently in a convenient cut to length design. Each.

Lengths 7"/18cm.		
Light	010x030	226221
Medium	012x030	200029
Heavy	014x036	226222

Spools 21"/53cm.		
Light	010x030	226220
Medium	012x030	200028



### G&H G4 NiTi Closed Coil Springs Spool

G4™ Closed coil springs provide consistent force and remain active until the space is closed. Comes in a convenient cut to length design. Spool 21"/53cm.

Medium 200gm	226212
--------------	--------



### Ortho Technology Tooth Coloured NiTi Open Coil Springs

Spool 36"/91cm. Each.

12x30	200250
-------	--------



### G&H G4 NiTi Closed Coil Springs

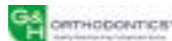
The unique G4™ Nickel Titanium alloy developed by G&H® is precision formed into closed coil springs. G4™ Springs provide consistent force and remain active until the space is closed. Consistent force values and full recovery are both routinely achieved with G4™ NiTi springs – and also G4™ NiTi Archwire. Pack 10.

9mm		12mm	
Feather Light	200009	Feather Light	200006
Light	200011	Light	226218
Medium	200012	Medium	200008
Heavy	226217	Heavy	226216



# Auxiliaries & Springs

## Coil Springs



### UnoDent Professional NiTi Closed Coil Spring

Pack 10.

Light	010x3mm	UOW400
Light	010x6mm	UOW401
Light	010x9mm	UOW402
Light	010x12mm	UOW403
Medium	012x3mm	UOW404
Medium	012x6mm	UOW405
Medium	012x9mm	UOW406
Medium	012x12mm	UOW407



### G&H Stainless Steel Closed Coil Springs

"Dead Coil" Excellent for space maintaining. No eyelets. Spool 21"/53cm.

10x30 200031



### G&H Stainless Steel Open Coil Springs

Spool 21"/53cm. No eyelets.  
10x30 226226  
10x36 200032



### G&H Molar Distalizing Open Coil Spring

Molar Distalizing Open Coil Springs deliver gentle 100 grams of force to achieve average 1mm to 1.5mm distalization per month without patient cooperation. 7"/18cm. Pack 3.

010x045 226219



# Elastomerics



### Orthocare Dura-Chain

Unique elastic properties, Dura-Chain has the ability to 'stay the pace' up to three times longer than other elastic chains, and remain continuously active in the mouth, providing faster, more efficient tooth movement. Clear chain.\* Latex free 4 metre spool.



Dura-Chain close link 256700    Dura-Chain medium link 256701    Dura-Chain wide link 256702

### Rocky Mountain Morita Power Chain

One of the most popular and well used Power Chains, maintains its elasticity and force throughout use.

<b>Closed</b>	<b>Medium</b>
Clear (Spool 13'/4m) 256516	Clear (Spool 15'/4.7m) 256518
Grey (Spool 13'/4m) 256514	Grey (Spool 15'/4.7m) 256517
<b>Wide</b>	
Grey (Spool 15'/4.7m) 256515	



# Rotation Wedges and Separators

### Dentaurum Dentalastics Separators

Blue for Posteriors. For quick and easy separation of teeth. Radiopaque. Inner dia 2.1mm. Pack 1000.  
Blue 200240



### UnoDent Professional UnoDent Separators

Separating Elastics 15 sticks with 70 Seps. Pack 1050.  
Blue UOE200



### UnoDent Professional Rotation Wedges

Rotation wedges make tooth rotation easier & faster. They provide complete contact with the tooth surface, thus allowing more force to be transmitted to the tooth. 10pcs/Stick x 20 Sticks.

Clear UOE201  
Grey UOE202





<b>Assorted Colours</b> 256433	<b>Rainbow Pack</b> 256464	<b>Tooth</b> 256643	<b>Clear</b> 256414	<b>Black</b> 256418	<b>White</b> 256642
<b>Grey</b> 256569	<b>Green</b> 256449	<b>Yellow</b> 256488	<b>Orange</b> 256415	<b>Royal Blue</b> 256406	<b>Ruby Red</b> 256417
<b>Turquoise</b> 256423	<b>Smoke</b> 256644	<b>Deep Sky Blue</b> 256443	<b>Fuschia</b> 256425	<b>Pink</b> 256416	<b>Lavender</b> 256434
<b>Navy Blue</b> 256399	<b>Light Sky Blue</b> 256405	<b>Maroon</b> 2A7981	<b>Neon Green</b> 256426	<b>Metallic Blue</b> 256519	<b>Metallic Purple</b> 256424
<b>Metallic Red</b> 256486	<b>Metallic Silver</b> 256408	<b>Metallic Gold</b> 256639	<b>Flourescent Orange</b> 256567	<b>Flourescent Pink</b> 256445	<b>Pearl</b> 256435
<b>Pearl Blue</b> 256456	<b>Pearl Green</b> 256640	<b>Glow</b> 256638	<b>Glow Blue</b> 256411	<b>Transparent Green</b> 256641	<b>Display Book</b> 256645

### G&H Latex Free Versa-Ties

Versa-Ties are designed to maximise clinical functionality and treatment efficiency. 22 Ties per stick, 46 Sticks per pack, 1,012 ties total.

- Optimum size - .120"/3.05mm
- Engage with a firm feel - facilitate tooth movement & retention
- Patient specific - 22 ties per stick
- Colours coordinated with Dyna-Link Chain



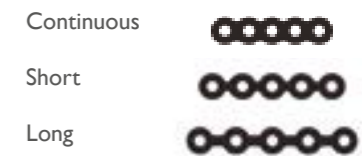
### G&H Dyna Link Latex Free Elastomeric Chain

Provides gentle, predictable tooth movement with superior memory and rebound. Thickness .026"/0.66mm.

<b>Tooth</b> Continuous 256605 Short 256622 Long 256575	<b>Clear</b> Continuous 256459 Short 256440 Long 256447	<b>Black</b> Continuous 256600 Short 256619 Long 256478	<b>White</b> Continuous 256598 Short 256617 Long 256637		
<b>Grey</b> Continuous 256474 Short 256453 Long 256400	<b>Green</b> Continuous 256594 Short 256529 Long 256398	<b>Yellow</b> Continuous 256603 Short 256621 Long 256573	<b>Orange</b> Continuous 256601 Short 256489 Long 256397	<b>Royal Blue</b> Continuous 256590 Short 256460 Long 256427	<b>Ruby Red</b> Continuous 256596 Short 256615 Long 256476
<b>Turquoise</b> Continuous 256597 Short 256616 Long 256455	<b>Smoke</b> Continuous 256606 Short 256623 Long 256576	<b>Deep Sky Blue</b> Continuous 256592 Short 256613 Long 256634	<b>Fuschia</b> Continuous 256599 Short 256527 Long 256410	<b>Pink</b> Continuous 256552 Short 256465 Long 256472	<b>Lavender</b> Continuous 256584 Short 256477 Long 256629
<b>Navy Blue</b> Continuous 256593 Short 256461 Long 256635	<b>Light Sky Blue</b> Continuous 256591 Short 256439 Long 256452	<b>Maroon</b> Continuous 256585 Short 256610 Long 256630	<b>Neon Green</b> Continuous 256580 Short 256563 Long 256626	<b>Metallic Blue</b> Continuous 256589 Short 256612 Long 256633	<b>Metallic Purple</b> Continuous 256587 Short 256473 Long 256475
<b>Metallic Red</b> Continuous 256588 Short 256561 Long 256632	<b>Metallic Silver</b> Continuous 256457 Short 256407 Long 256428	<b>Metallic Gold</b> Continuous 256586 Short 256611 Long 256631	<b>Flourescent Orange</b> Continuous 256602 Short 256620 Long 256572	<b>Flourescent Pink</b> Continuous 256604 Short 256525 Long 256574	<b>Pearl</b> Continuous 256578 Short 256485 Long 256624
<b>Pearl Blue</b> Continuous 256583 Short 256444 Long 256442	<b>Pearl Green</b> Continuous 256581 Short 256608 Long 256627	<b>Glow</b> Continuous 256579 Short 256607 Long 256625	<b>Glow Blue</b> Continuous 256582 Short 256609 Long 256628	<b>Transparent Green</b> Continuous 256595 Short 256614 Long 256636	



Available in three space variations



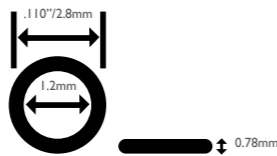
### Unirose Combination Organiser

Easy for patients to choose colours. Allows for quick inventory. Stores 12 packs of ties & 12 reels of chain. Each. 255560



UnoDent Professional  
Elastomeric Ligatures

Latex Free Elastomeric Ligatures.  
Medical Grade Polyurethane with colour matching power chain.

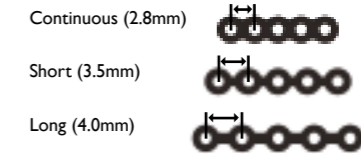


Dark Red UOE001	Maroon UOE002	Red UOE003	Fire Red UOE004	Tangerine UOE005	Silver UOE006	Hot Pink UOE007	Fuchsia UOE008		
Baby Pink UOE009	Lavender UOE010	Purple UOE011	Gold UOE012	Jelly Blue UOE013	Lime UOE014	Dark Green UOE015	Jelly Purple UOE016	Dark Grey UOE017	Deep Sky Blue UOE018
Navy Blue UOE019	Royal Blue UOE020	Dark Purple UOE021	Pearl Blue UOE022	White UOE023	Yellow UOE024	Clear UOE025	Sky Blue UOE026	Tooth UOE027	Jade UOE028
Teal UOE029	Jelly Yellow UOE030	Jelly Lavender UOE031	Jelly Dark Green UOE032	Fluor Light Green UOE033	Aubergine UOE034	Lawn Green UOE035	Spring Green UOE036	Pearl UOE037	Mint UOE038
Jelly Pink UOE039	Jelly Purple UOE040	Sea Foam UOE041	Violet UOE042	Baby Blue UOE043	Cobalt Blue UOE044	Apple Green UOE045	Grape UOE046	Diamond White UOE047	Assorted Colours UOE180

26 Ligatures/Stick. 40 Sticks.

UnoDent Professional  
Elastomeric Chain

Latex Free Elastomeric Chain.



Dark Red Cont UOE048 Short UOE083 Long UOE117	Maroon Cont UOE049 Short UOE084 Long UOE118	Red Cont UOE050 Short UOE085 Long UOE119	Fire Red Cont UOE051 Short UOE086 Long UOE120	Tangerine Cont UOE052 Short UOE087 Long UOE121	Silver Cont UOE053 Short UOE088 Long UOE122	Hot Pink Cont UOE054 Short UOE089 Long UOE123	Fuchsia Cont UOE055 Short UOE090 Long UOE124	Baby Pink Cont UOE056 Short UOE091 Long UOE125
Lavender Cont UOE057 Short UOE092 Long UOE126	Purple Cont UOE058 Short UOE093 Long UOE127	Gold Cont UOE059 Short UOE094 Long UOE128	Lime Cont UOE060 Short UOE095 Long UOE129	Dark Green Cont UOE061 Short UOE096 Long UOE130	Jelly Purple Cont UOE062 Short UOE097 Long UOE131	Dark Grey Cont UOE063 Short UOE098 Long UOE132	Deep Sky Blue Cont UOE064 Short UOE099 Long UOE133	Navy Blue Cont UOE065 Short UOE100 Long UOE134
Royal Blue Cont UOE066 Short UOE101 Long UOE135	Dark Purple Cont UOE067 Short UOE102 Long UOE136	Pearl Blue Cont UOE068	White Cont UOE069 Short UOE103 Long UOE137	Yellow Cont UOE070 Short UOE104 Long UOE138	Clear Cont UOE071 Short UOE105 Long UOE139	Sky Blue Cont UOE072 Short UOE106	Jade Cont UOE073 Short UOE107 Long UOE140	Teal Cont UOE074 Short UOE108 Long UOE141
Jelly Yellow Cont UOE075 Short UOE109 Long UOE142	Jelly Lavender Cont UOE076 Short UOE110 Long UOE143	Jelly Dark Green Cont UOE077 Short UOE111 Long UOE144	Lawn Green Cont UOE078 Short UOE112 Long UOE145	Pearl Cont UOE079 Short UOE113 Long UOE146	Jelly Pink Cont UOE080 Short UOE114 Long UOE147	Sea Foam Cont UOE081 Short UOE115 Long UOE148	Cobalt Blue Cont UOE082 Short UOE116 Long UOE149	



### G&H Enchanted Collection

Intra Oral Patient Elastics. 50 bags each containing 100 elastics.

- Clear and simple sizing
- Available in the most popular sizes: 1/8", 3/16", 1/4", 5/16"
  - Light, Medium and Heavy
- Natural latex rubber



#### Light 2.5oz/71gm

Dia	Design	Code
1/8"	Leprecaun	256436
3/16"	Frog Prince	256441
1/4"	Giant	256429
5/16"	Centaur	256430
3/8"	Pirate	256394

#### Heavy 6.5oz/184gm

Dia	Design	Code
1/8"	Wizard	256550
3/16"	Unicorn	256401
1/4"	Pegasus	256403
5/16"	Knight	256432
3/8"	Roman Soldier	256393

#### Medium 4.5oz/128gm

Dia	Design	Code
1/8"	Dragon	256463
3/16"	Genie	256402
1/4"	Sprite	256404
5/16"	Trumpeter	256412
3/8"	Barbarian	256468

#### X-Heavy 8.5oz/241gm

Dia	Design	Code
3/16"	Gnome	256577
1/4"	Minotaur	256396
5/16"	Jester	256395

### G&H Latex Free Elastics

- Eliminates latex allergic reaction concerns
- Force in ounces measured at 3x passive diameter
- Simple to dispense, easy for patient to use

Dia	Weight	Code
3/16"	Med 4.5oz	251140
3/16"	Heavy 6.5oz	251141
1/4"	Med 4.5oz	251142
1/4"	Heavy 6.5oz	251143



### Reliance Realastics

Intra Oral Elastics Patient Elastic. Foil outer. 50 bags per pack each containing 100 elastics.



Resealable & Tamper Proof

Letter Designates Size

Colour Designates Force

Light Resistant Plastic

#### Latex Elastics

- 5 sizes & 4 forces provide the treatment choices for any applied mechanics
- Manufactured from surgical grade latex
- Thickness & diameters guaranteed accurate
- Precision manufacturing techniques & in-process testing assure force accuracy
- Force values determined at 3 times extension from passive diameter
- 3-year shelf life

Force Values & DD Website Order Codes

Size ID	Actual Size	Dimensional Size	Light 2.5 oz Red	Medium 3.5 oz Green	Heavy 4.5 oz Blue	X-Heavy 6.5 oz Black
A	○	1/8" 3.2 mm	Red A 253050	Green A 253055	Blue A 253060	Black A 253065
B	○	3/16" 4.8 mm	Red B 253051	Green B 253056	Blue B 253061	Black B 253066
C	○	1/4" 6.4 mm	Red C 253052	Green C 253057	Blue C 253062	Black C 253067
D	○	5/16" 7.9 mm	Red D 253053	Green D 253058	Blue D 253063	Black D 253068
E	○	3/8" 9.5 mm	Red E 253054	Green E 253059	Blue E 253064	Black E 253069



## Reliance Light Bond Paste

Light Bond light cure bracket and bonding tube adhesive. 5g.

- Intraoral bonding for Metal, Composite Ceramic Brackets
- Smooth tacky viscosity
- Easy flash and debond clean up

### Tips

Medium Paste Fluoride Free	FBE386
Regular Paste Fluoride Free	FBE422
Thin Paste Fluoride Free	2A8878
Blue Paste Fluoride Free	2A8872

### Syringes

Medium Paste Fluoride Free	2A8935
Regular Paste	FBE362
Thin Paste Fluoride Free	FBE385



## Reliance Light Bond Sealant

Light Bond sealants are intended for use as a light cure sealant resin for bonding. Each.

3cc	2A8858
7cc + Fluoride	FBE370
3cc Filled + Fluoride	2A8857
7cc Filled + Fluoride	2A8893



Use [relianceu.tech](http://relianceu.tech) for all bonding techniques. Just scan the QR code with your phone or click to view.

## Reliance Rely-a-Bond

No Mix bracket adhesive. Contact cure-prime to paste. Chemical cure -no light required. Saves time and material, no mixing minimizes adhesive per bond, highly filled paste, increased bond strength, tacky viscosity, prevents bracket drift. Each.

<b>Syringes</b>		<b>Primers</b>	
3.5g Paste	FBE425	16cc Primer Fluoride Free	2A8841
3.5g Thin Paste	2A8856	16cc Primer + Fluoride	FBE375

<b>Tips</b>		<b>Kit</b>	
Paste	FBE373	4 Syringes + Fluoride	FBE378



## Reliance Maximum Cure®

This sealant will set in a thin layer. A unique catalyst system prevents oxygen interference during polymerization. The whole labial or lingual tooth surface can be sealed. Sealant is formulated with a patented fluoride monomer.

Chemical Cure System - No curing Light Required: With Maximum Cure Sealant, multiple teeth can be sealed in the time it would take to cure one tooth with a light cure material. Maximum Cure Filled Sealant for longer lasting protection.

A + Fluoride 20g	FBE371	B 7g	FBE381
B 20g	FBE372	Part A filled 7g	2A8896
A + Fluoride 7g	FBE380	Part B filled 7g	2A8897

Lingual Applications



## Pelz Maximum Cure Cooler

Very efficient for cooling and storage of Maximum Cure A and B. For two 20g bottles. Special aluminium alloy, blue. DPR752



# Bonding and Adhesives

## Reliance Metal Primer

A conditioner for metal surfaces for bonding with an adhesive. Each.

8ml FBE366



## Reliance Plastic Conditioner

Acrylic primer, initiates bond between appliance and adhesive. Each.

10ml FBE374



## Reliance Assure Universal Bonding Resin

Increases adhesion to normal, atypical, dry or slightly contaminated enamel. Each.

6ml FBE412



## Reliance Assure + All Surface Bonding Resin

Will bond to all intraoral surfaces without additional primers.

- Use on: Enamel (Normal, Atypical, Wet or Dry, Dentin, Porcelain (Say good bye to Hydrofluoric Acid and Barrier Gels), Metal (Gold, Amalgam, Stainless Steel), Composite, Zirconia
- Use with any light, cure or chemical bonding systems
- No drying or light curing required
- Use as your conventional bond
- No need for extra bonding agents
- Long Shelf Life

6ml FBE367



## Reliance Porcelain Conditioner

For bonding to ceramic crowns. Effective with porcelain, zirconia. Each.

8ml FBE368



## Reliance Porc-Etch and Barrier Gel

Porcelain etch with barrier gel. Preps porcelain crowns for bonding. Each.

8ml FBE364



## Reliance T.K.O. Composite Bite Turbo Gel Pink

Looking for a Triad substitute? Reliance is excited to introduce T.K.O.

- Quick light cure acrylic repair
- Gentle impact Resin Matrix (*great for occlusal build ups*)
- Needle tip dispensing for accurate and ergonomic placement
- Will not wear opposing tooth structure.
- Relatively easy to remove at the end of treatment
- Used in both lab and chairside settings
- Pink shade to contrast enamel

3.4g FBE430



## Ultra S.E.P. First Ever Orthodontic No Mix Self Etch Primer

Non-AGP procedure

Reliance Ultra S.E.P. features a single liquid application – making effective tooth preparation quick, simple, and error-free.

- Effective and Efficient Tooth Prep
- Reduces Chair Time with Simplified Process
- Scrub onto enamel for 5 seconds
- Air dry
- Apply Assure Plus (optional)
- Air Dry
- Deliver Bracket and Cure
- Single Liquid Application - No Mixing
- Great for both initial bonding and emergency repair appointments
- Effective for all enamel surfaces
- Bracket and Tube Bonding
- Buildups
- Increasing band cement retention
- Attachment delivery

Ultra SEP 6ml FBE413

Ring Well 6ml FBE414



Use Reliance University for all clinical procedures. Just scan the QR code with your phone or click to view.



## Reliance Pad-Lock

Bonds chemically and mechanically to metal bases to ensure better adhesion. Fluoresces under UV light for debond cleanup. Each.

**Kits**  
 Syringe + Assure Kit 2A8957  
 Syringe + Assure Kit + Flouride FBE382

**Tips**  
 Tips without Fluoride 4.5gm 2A8862

**Syringe**  
 Push Syringe 4.5gm FBE363



## Reliance GoTo Adhesive Paste

GoTo® is a light cure adhesive with superior handling properties. It does not allow bracket flotation once placed on the tooth or during flash removal. A fraction of the retail cost of leading, competitive light cure pastes!

4g Syringe 2A8933  
 10 x 4g Tips 2A8932



## Reliance Ist & Final Ortho Pumice

Pre packed Ortho pumice for polishing enamel. No added chemicals, no flavouring, fluoride or oils. Pack 200. JPO000



Use Reliance University for all clinical procedures. Just scan the QR code with your phone or click to view.

## Reliance Perfect-A-Smile Pontic Paint

Quick and economical aesthetic solution.

- Light cure applies smoothly to clear aligner sockets
- Translucent to match enamel
- High elasticity, bonds to any clear aligner
- Quick & economical. 4g

A1	200261	B1	200266
A2	200262	C1	200263
A3.5	200233	C4	200264
		D3	200265



Light 200232  
 Medium FBE377  
 Bleach 200260

## Reliance Perfect-A-Smile Pontic Putty

Fingertip Pontic Fabrication. Light cure composite paste with putty-like consistency. Facilitates tooth shape formation. Eliminates pontics, wax & PVS. Bonds tenaciously to stone/resin models. Provides proper clear aligner anatomy. 5g.

**Clinical Applications:**

- Pontic formation by hand
- Bridges/fills gaps in model
- Facilitates proper aligner formation

200237



## Danville StarFlow

StarFlow is a light-cure, highly filled flowable composite for anterior and posterior restorations, low wear applications, cavity liner and conservative restorations. Use with Orthoflextech for lingual retention. Excellent wear resistance. 5g. Each.

- Radiopaque
- Sub-micron particle size gives superior polishability and resistance to staining
- True Vita shade match
- Non-sticky
- Fluoride slow release and natural fluorescence

A1	FLS552
A2	FLS550
A3	FLS553
A3.5	FLS551
A4	FLS554
Replacement Tips	FLS580







## Reliance Ultra Band-Lok Syringe

### Single Paste System

- Light Cured - unlimited working time
- Resin Base Glass Ionomer - High fluoride release
- Natural or blue shade
- Bonds to metal - Ultra Band-Lok® will bond chemically to stainless steel bands
- Clean Up effortless
- All purpose cement - Ultra Band-Lok® can be used to bond large acrylic appliances and as an occlusal build-up material

### Clinical Applications

- Band cementation
- Occlusal/Bite Opener build ups (etch enamel surface first)
- Occlusal build up instructional video available at RelianceU.tech
- Acrylic appliances - Hyrax, MARA, RPE, etc

- Lab block out material

5g Blue Hi Vis      FBE369

5g Natural          FBE365



## Reliance Flow Tain with Tips

Light cure flowable composite, slumps over wire, thixotropic viscosity, cures glassy and smooth. Each.

1.5g Syringe      FBE345

1.5g LV Syringe      FBE396



## Reliance S.E.P Self Etching Primer Pro Kit

The Reliance S.E.P is a self etching primer intended to be used for the preparation of an enamel surface of a tooth prior to bonding with a light cure orthodontic adhesive.

Minimize waste! Simply push, mix and apply. Mixing well cover will keep unused solution fresh and protected from light for up to 6 hours.

Works with any light cure adhesive regardless of manufacturer.

Cartridge Kit      FBE394

Refill              FBE387

Mixing well      2A8974

Microbrush Regular      2A8950

Microbrush Superfine      2A8951



Non-AGP procedure



## GC Fuji Ortho LC Kit

One of the most advanced Ortho Glass Ionomers on the market. Allows you to bond in a non-agp setting. Contains: 15g powder, 6.8ml liquid and accessories.

LCF100

Non-AGP procedure



## GC Fuji Ortho LC Refill Capsules

Box 50.  
LCF120



## GC Fuji Ortho LC Liquid

6.8mL.  
LCF110



## GC Fuji Ortho LC Powder

40gm.  
LCF115



## GC Fuji Ortho 1:2 Pack

Contains: 1 x 40gm Powder, 2 x 6.8 mL (8gm) Liquid, Accessories.  
LCF150



## GC Fuji Ortho Liquid

6.8mL.  
LCF155





## Ormco Ortho Solo Refill Bottle

A universal sealant and bonding primer for use with light cure and chemical cure bonding systems. Ortho Solo's hydrophilic property makes it moisture tolerant for optimal and reliable orthodontic bonding. 5ml.

FBE311



## Ormco Blugloo Syringe Refill

Blugloo is an adhesive that provides colour contrast when you need it and is clear when you don't. Bracket placement and cleanup have never been easier. 4g.

- Colour on demand: Colour contrast during bonding facilitates fast, accurate bracket placement
- Formulated for aesthetic brackets: Blugloo has a unique chemical affinity for today's high-tech composite brackets
- Superb handling characteristics: Formulated with an ideal combination of hybrid filler materials to provide superb handling characteristics
- Generous working time: Blugloo's chemical properties allow for generous working time under operator lighting
- Versatility: Colour and chemistry have been optimized for aesthetic brackets and is excellent for bonding metal brackets

FBE312



## Ormco Grengloo Syringe Refill

Grengloo is the two-way colour change adhesive that revolutionizes metal bracket bonding by combining the strength, flexibility and intelligent features you want for the reliability you demand. Syringe 4g.

- Provides great working time for better placement under ambient conditions, affording you more flexibility to place and position brackets
- Provides high level of impact resistance for reduced emergency visits as a result of bond failures caused by traumatic impacts
- Formula includes a unique hybrid filler material that provides excellent handling characteristics, making cleanup easy and virtually eliminating bracket drift
- "On-demand" colour contrast feature aids in fast and accurate cleanup at bonding and debonding

FBE310



## UnoDent Trays

Brightly coloured disposable impression trays. Perforated to ensure alginate retention. 6 sizes to fit any patient.

### UnoDent Paedo Red



Pack 25/50

Upper IIO031/IIO051

Lower IIO042/IIO061

### UnoDent X Small Orange



Pack 25/50

Upper IIO032/IIO052

Lower IIO042/IIO062

### UnoDent Small Blue



Pack 25/50

Upper IIO033/IIO053

Lower IIO043/IIO063

### UnoDent Assorted Packs

Contains 6 sizes, with 10 trays of each size. Pack 60.

Upper IIO070



Lower IIO080



### UnoDent Medium Green



Pack 25/50

Upper IIO034/IIO054

Lower IIO044/IIO064

### UnoDent Large Yellow



Pack 25/50

Upper IIO035/IIO055

Lower IIO045/IIO065

### UnoDent X Large Purple



Pack 25/50

Upper IIO036/IIO056

Lower IIO046/IIO066



## G&H Trays

Rigid colour-coded anatomical plastic trays with perforation strips that offer economical use and disposability. Long handles provide sure grip while retention slots secure alginate without the need for adhesives.

### G&H Paedo Red

Size 1. Pack 50  
Upper IIO211  
Lower IIO212



### G&H Small Blue

Size 3. Pack 50  
Upper IIO203  
Lower IIO213



### G&H Medium Green

Size 4. Pack 50.  
Upper IIO204  
Lower IIO214



### G&H Large Yellow

Size 5. Pack 50.  
Upper IIO205  
Lower IIO215



### G&H X Large Purple

Size 6. Pack 50.  
Upper IIO206  
Lower IIO216



## Perforated Plastic Impression Trays

- Made of Recyclable Plastic
- Anatomical shape and size ideal for UK orthodontic patients
- Excellent depth tray
- Innovative retention slots for optimum retention of material - no adhesion required
- Superior rigidity for enhanced accuracy of impression
- Researched, developed and manufactured in the UK



### Orthocare Small Yellow

Pack 20.  
Upper IIO180  
Lower IIO183  
Pack 100.  
Upper IIO170  
Lower IIO173



### Orthocare Medium Red

Pack 20.  
Upper IIO181  
Lower IIO184  
Pack 100.  
Upper IIO171  
Lower IIO174



### Orthocare Large Blue

Pack 20.  
Upper IIO182  
Lower IIO185  
Pack 100.  
Upper IIO172  
Lower IIO175

## Duralock Trays

Made from medical grade plastic. Designed to be either disposable or cold sterilisable. Extra perforations for secure alginate retention.

### Ortho Technology Paedo Red

Pack 50.  
Upper IIO116  
Lower IIO110



### Ortho Technology X Small Orange

Pack 50.  
Upper IIO117  
Lower IIO111



### Ortho Technology Small Blue

Pack 50.  
Upper IIO118  
Lower IIO112



### Ortho Technology Medium Green

Pack 50.  
Upper IIO119  
Lower IIO113



### Ortho Technology Large Yellow

Pack 50.  
Upper IIO120  
Lower IIO114



### Ortho Technology X Large Purple

Pack 50.  
Upper IIO121  
Lower IIO115



## Projet Bite Recorders

- Incisal opening
- Occlusal Registration for Functional Appliances

Plastic jigs can be used with either wax or silicone occlusal registration materials to record protrusive registration of the mandible. For Class II Malocclusions. Pack 25

Projet bite recorders blue 2mm IMA010  
Projet bite recorders white 4mm IMA020



## Zhermack Orthoprint

Extra rapid set for Orthodontics (45secs) Yellow colour, vanilla flavour, anti-nausea, Dust Free. 500g. IAZ010



## UnoDent Orthodontic Alginate

Extra fast setting. Dust-free. Tear resistant. Lilac coloured. Strawberry. Latex and gluten free. 453g. IAA315



## Mikrona MIGMA 200 Alginate Mixer

Guaranteed Bubble-free impressions in 12 seconds. A fabulous addition to your surgery. Each. 2A6168



Lingual Applications

## Bisico Plicafol

Space Maintaining Separating Foil recommended for all impressions. Recommended for Incognito case selection. Pack 100. JWU030



Lingual Applications

## DD Orthodontics Orthodontic Tray Wax

A soft, white plastic wax stick 185mm x 6.5mm for orthodontic use in the extension of periphery, post-damming and stops for impression trays. JWP028



## Nubox Model Boxes

Model boxes available in sizes: 8x3x3, 9x3x3, 11x3x3 YOM010-YOM030



## Composite Removal

### UnoDent 1170 TC RA

Tapered Fissure 8 fluted. Blister Pack Solo Peel. Single Dispensing Pull Back Label. Pack 5.

Latch Grip  
R/A Slow H/P 296500



### UnoDent 1171 1/2 RA TC 1171 1/2 FG TC

Tapered Fissure 8 fluted. Blister Pack Solo Peel. Pack 5.

Latch Grip  
R/A Slow H/P 296501  
Friction Grip  
F/G High Speed H/P 296503



### UnoDent 1172 TC RA 1172 TC FG

Popular  
Product

Tapered Fissure 8 fluted. Blister Pack Solo Peel. Pack 10.

Latch Grip  
R/A Slow H/P 296506  
Friction Grip  
F/G High Speed H/P 296507



### UnoDent 7006 RA TC 7006 FG TC

Round Head. Blister Pack Solo Peel. Pack 5.

Latch Grip  
R/A Slow H/P 296505  
Friction Grip  
F/G High Speed H/P 296504



Slow Speed Burs  
for Non-AGP  
Procedures

### UnoDent Orthodontic Burs Starter Kit

Contains everything you need to trim acrylic on Removable and Functional Appliances:

- 4 Trimmers including a jumbo cutter for trimming bulk acrylic and stone off study models
- 2 Grey Medium Grit Polishers for acrylic roughening
- 1x Yellow Fine Grit Polisher for a high Sheen
- 2 Mounted Lab Polishers
- Mandrel & Buffing Wheels to polish soldered areas
- Mounted in an easy to access bur block KUO000



### Swiss Dental Care Debonding Burs 1172

Pack 5.  
Latch Grip 200147  
Friction Grip 200146



### Swiss Dental Care Egg-shaped Bur

Excellent for Lingual composite removal. Pack 5.  
Latch Grip 200150  
Friction Grip 200156



### Reliance Renew System Bur 118S/L

18 fluted burs designed for controlled removal of bulk bonding adhesive after the brackets have been removed. Each.  
118S 200235  
118L 200165



### Reliance Renew System Bur 218S

An 18 fluted bur tapered to reach into those tight areas along the gingival & occlusal when removing residual adhesive. Each.  
200255



### Edenta Tapered Fissure Debonding Bur

TC Round End Tapered Fissure. Latch Grip. 4.2mm Head. 50,000 max rpm. Pack 5.  
1171 1/2 RA 296610  
1172 RA 296612



### Reliance Renew System Points 383

Removes small residual amounts of adhesive from the tooth surface and will polish the enamel without damage. Pack 12.  
Latch Grip 200166  
Friction Grip 200234



### Edenta Adhesive Removal Bur

Safe end 12 blade adhesive removal burs. Pack 5.  
296021



### Kerr Tapered Fissure Debonding Bur

8 Fluted. TC Round End Tapered Fissure. Latch Grip. 50,000 max rpm. Pack 5.  
1171 TC RA 296620  
1172 TC RA 296621



# Lingual Retention

## Essential Stability



### Reliance Ortho-FlexTech

- Use Post aligner treatment.
- Stabilizes orthodontic corrections
- Microetched for Maximum Retention
- Prevents rotational relapses
- Easy application - naturally forms to lingual arch curvature
- Fully passive no wire bending required
- Less doctor time / less chair time
- Low failure rate due to "flex linkage"
- No laboratory costs or delays
- Improved patient comfort - lays flat against the teeth
- Choice of material
- 30"/76cm



**NEW** Nickel Free 14kt White Gold 200229  
 14kt White Gold Microetched 200230  
 Stainless Steel Microetched 200231



Use Reliance University for all clinical procedures. Just scan the QR code with your phone

### Reliance Bond-A-Braid Lingual Retainer Wire

Dead soft wire easily adapts. For semi permanent splinting for upper & lower incisors, diastema maintenance and other tooth splinting. Pack 10.

FBE384



### Reliance Retainium Nickel Free Lengths

Extra Reinforced Single strand NICKEL FREE titanium flat metal ribbon with increased interproximal strength is ideal for semi permanent splinting and maintaining difficult extraction sites. Pack 10.

6"/15cm 235212  
 XL 6"/15cm 235211



### Pelz Gold Plated Retainer Wire

Multi stranded, 6-strand coaxial. Pack 5.

.0155 2A7319  
 .0175 2A7320  
 .0195 2A7321



### GC EverStick Ortho

Incorporates a thousand glass fiber strands bound together with a pre impregnated light cure adhesive that allows adaptation directly in the patients mouth. Metal free. Bonds chemically & mechanically. 2 x 12cm Refill. Each.

TKG006



Download the GC App. Just scan the QR code on page 43.

# IPR

## Interproximal Reduction



Full Range of IPR Materials Available in the Aligner Accessories Collection YSZ925

### QwikStrip QwikStrip Ultimate Kit

The industry leading QwikStrips are an interproximal solution for removing cement from in between teeth and also for creating the precise spacing needed for minor tooth movement. All QwikStrips are autoclavable and may be used with any Orthodontic aligner system. QwikStrips are available as Double or Single sided in packs of 10.

Contains:  
 5 Single-Sided (.07mm-.18mm)  
 5 Double-Sided (.18mm-.40mm).  
 KFH050



Watch a QwikStrip IPR Demonstration. Just scan the QR code with your phone

### QwikStrip QwikStrip Single-Sided

Ideal for breaking contacts and for interproximal cement removal. Pack 10.

.07mm Yellow KFH052  
 10mm Red KFH053  
 13mm Blue KFH054  
 16mm Green KFH055  
 18mm Black KFH056

### QwikStrip QwikStrip Curved

Ideal for breaking contacts and for interproximal cement removal. Pack 10.

.07mm Yellow KFH057  
 10mm Red KFH058  
 13mm Blue KFH059  
 16mm Green KFH060  
 18mm Black KFH061

### QwikStrip QwikStrip Double-Sided

Ideal for breaking contacts and for interproximal cement removal. Pack 10.

18mm Yellow KFH062  
 20mm Red KFH063  
 25mm Blue KFH064  
 30mm Green KFH065  
 40mm Black KFH066

### QwikStrip QwikStrip Serrated

Ideal for breaking contacts and for interproximal cement removal. Pack 10.

.05mm White KFH051





Full Range of IPR Materials Available in the Aligner Accessories Collection YSZ925



### Swiss Dentacare IPR Diamond Bur Fine Red 392

IPR Diamond Bur. Fine Grain.  
Red 392. Pack 5.  
200148



### Swiss Dentacare Measuring Gauge 5 leaf gauges

5 different thicknesses to measure the IPR space. 0.1mm to 0.5mm. Each.  
200154



### Edenta IPR Diamond Bur 392-016

IPR Diamond Bur. Pack 5.  
Medium 296022  
Fine 296024



### Swiss Dentacare G5-Shank

The SDC-G5 Shank is a file holder for use exclusively with all G5 instruments. Autoclavable. Pink Refill. Pack 20.  
200157



### Swiss Dentacare G5 Prolign Starter Kit

G5- Prolign Calibrated files, used with an EVA Reciprocating handpiece provides a precise method of reducing tooth enamel which is safe, accurate, and gentler to the patient than manual reduction.

Use in Orthodontic and all aligner treatments where you need to ensure that you are creating the correct amount of enamel reduction.

- 5 G5 Double Sided Files calibrated to the limit of enamel removal 0.1mm to 0.5mm
- 2 G5 Single Sided Files 0.1 and 0.2 mm
- G5 Shanks
- Measuring Gauge
- 2x Polishing Strips
- Handpiece
- All files autoclavable

Coxo Handpiece 200170  
NSK Handpiece 200163



Watch how to use the G5 Prolign Starter Kit. Just scan the QR code with your phone

### Swiss Dentacare G5 ProLign Files

Refill Components. Pack 3.

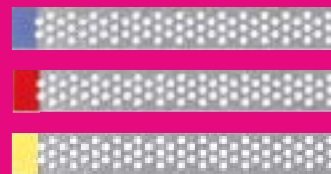
Single Sided  
0.10mm 200152  
0.20mm 200151

Double Sided  
0.10mm OKD110  
0.20mm 200141  
0.30mm 200142  
0.40mm 200143  
0.50mm 200145



### Edenta Diamond Finishing Strips

For Removing excess material from the proximal regions of filling - materials like composites, acrylics, glass ionomer cements and amalgam. Removing excess cement after placing inlays, onlays and laminate veneers. Especially useful for enamel reduction as recommended for aligner treatments.



Perforated Pack 10

.13mm Blue Medium 45µm KFE209  
.10mm Red Fine 30µm KFE213  
.08mm Yellow Extra Fine 15µm KFE210

Non Perforated Pack 5

.13mm Blue Medium 45µm KFE220  
.10mm Red Fine 30µm KFE221  
.08mm Yellow Extra Fine 15µm KFE222

### G&H Lightning Strips

Interproximal strips. Pack 12.

Single Sided  
4mm 200023  
6mm 200024  
8mm 200025

Double Sided  
4mm 200020  
6mm 200021  
8mm 200022





### Intensiv Interprox Diamond Burs

Pack 6.

- 314 167 524 FG Blue 296026
- 314 167 514 FG Red 296027
- 314 167 504 FG Yellow 296028



### Intensiv IPR Distance Control Set

- Stainless Steel
  - Autoclavable
  - 8 Sizes 0.1mm through to 1.0mm
- OKD100



### Intensiv IPR Set Professional

Everything you need for effective IPR. Reciprocating W&H Eva Handpiece and the full range of Intensiv Files and manual strips.

All in a single autoclave box. OKD048



### Intensiv Separate and Strip

A serrated diamond strip which allows you to break tight contact points and remove excess composite. Pack 3.

Double-Sided OKD090  
Single-Sided OKD091



### Intensiv Ortho Strips

Fast, Efficient and precise. Single and Double Sided Metal framed files for reduction and polishing. Pack 3.

Double Sided

- 08µm OKD080
- 15µm OKD060
- 25µm OKD063
- 40µm OKD066
- 60µm OKD069
- 80µm OKD095



Single-Sided Left

- 08µm OKD081
- 15µm OKD059
- 25µm OKD083
- 40µm OKD084
- 60µm OKD073
- 80µm OKD096

Single-Sided Right

- 08µm OKD082
- 15µm OKD062
- 25µm OKD065
- 40µm OKD068
- 60µm OKD071
- 80µm OKD097

Full Range of IPR Materials Available in the Aligner Accessories Collection YSZ925

### Intensiv Ortho Strips Single Sided Set

Contains an assortment of 6 oscillating files:

- Left and Right
- Polishing (15µm)
- Contouring (40µm)
- Finishing (25µm)

Pack 6. OKD056



### Intensiv Ortho Strips Double Sided Set

Contains an assortment of 4 oscillating files:

- Double Sided
- Polishing (15µm)
- Contouring (40µm)
- Contouring (60µm)
- Finishing (25µm)

Pack 4. OKD054



### Intensiv Swingle Ortho Kits

W&H Synea Reciprocating Handpiece with a 6 file set  
Swingle Ortho W&H with Light OKD049  
Swingle Ortho W&H without Light OKD050





### UnoDent Professional ProxyMate

Features an adjustable handle to lock curvatures into place for maximum precision, patient safety and minimal fatigue. Ideal for proximal contact adjustment, marginal crown seating, veneers, onlays and proximal contouring of composite fillings.

Variety Intro Kit - Single/Double:  
10 strips in a variety of grits (single and double-sided).  
KFS200



### UnoDent Superflex Diamond Discs

Single and Double Sided Diamond discs with fine diamond grit. For separating ceramics, plaster, acrylics and resin veneers. Fixed mandrel. Latch Grip. Each.

#### Single Sided

19mm BHU155, BHU170  
22mm BHU160, BHU175

#### Double Sided

16mm BHU230  
19mm BHU231  
22mm BHU232



### UnoDent Disc Guards

Easy to use: attach disc guard to adaptor, slide adaptor onto slow speed straight handpiece, insert disc and close latch. Pack 3.

BHU500



### UnoDent Stripping Discs

Serrated diamond discs with fine diamond grit, for separating ceramics, plaster, acrylics and resin veneers. Latch Grip. Each.

#### Double Sided RA

19mm BHU190  
22mm BHU220



### Pop on Diamond Finishing Discs

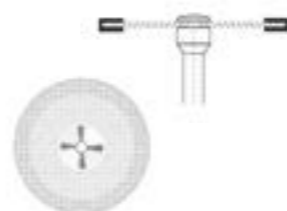
Double sided 1mm Edge Diamond Coated. Each.

10mm KFK050  
14mm KFK051  
18mm KFK052  
Mandrel KFK053



### Edenta Superflex Diamond Open Mesh Disc

Mandrel Mounted. Each.  
BHU233



### UnoDent Professional Mouth Mirrors Rear Surface

The design of the reflecting layers in the mirror provides maximum image quality. Autoclavable.

#### Individual Mirrors

Plane 2 DMO310  
Plane 3 DMO313  
Plane 4 DMO320  
Plane 5 DMO325  
Plane 6 DMO330

#### Pack 12

Plane 4 DMO350



### UnoDent Professional Mouth Mirror Rear Surface Magnifying

Magnifying 4 Rear Surface. Autoclavable. Pack 12.  
DMO410



### UnoDent Professional Mouth Mirror Front Surface

Rhodium. Plane 4. Pack 12.  
DMO120



### UnoDent Professional Mouth Mirror Handle

Round grip. Each.  
DMH010



### UnoDent Professional Mouth Mirror Handle

Hexagonal grip. Each.  
DMH410





### G&H Premium Glass Mirror Adult Occlusal

Manufactured of 3mm float glass for distortion-free surface and double-side coated with chromium for maximum reflectiveness.

Extra Large  
6.7cm x 13.5cm  
(at widest point). XXO040



### UnoDent Intraoral Photo Mirror Chromium Coated

No double reflections - Coated on both sides - Provides sharp images - Chromium coated glass - Extremely durable coating - For use with digital or conventional 35mm Cleaning & Sterilisation Instructions.

Adult	XXO001
Child	XXO002
Buccal	XXO003
Lingual	XXO004
Palatal XL	XXO005



### UnoDent Intraoral Photo Mirror Stainless Steel

Autoclavable. Highly polished Stainless Steel surface. Double ended versatility. Highly durable.

Adult Palatal & Buccal	XXO035
Adult & Child Palatal	XXO032
Adult & Child Palatal XL	XXO031
Buccal	XXO033
Lingual Upper & Lower	XXO034



### Hahnankratt Ultra FS Mirrors

- Distortion-free, extremely sharp, high-contrast reproduction down to the smallest detail
- Highly resistant against all kinds of disinfection and sterilisation (180°C), even against acidic
- Brilliant natural colours and excellent lightness with a homogeneous reflection spectrum of 90% compared to silver

V Shape Handle	
58 x 76mm	QVX801
66 x 95mm	QVX800
74 x 106mm	QVX802

Straight Handle	
58 x 76mm	QVX807
66 x 95mm	QVX808
74 x 106mm	QVX809



### Acteon Photo Mirror Pure Reflect

To meet modern dentistry standards, the exacting nature of the Acteon Pure Reflect mirrors offers true clarity with a reflection rate close to 100%, providing a precise image of colours and dental structures without distortion. Double sided and gives a clear image. Made from Titanium.

Adult Occlusal	XXO059
Child Occlusal	XXO060
XL Occlusal	XXO072
Lingual	XXO062



### Nichrominox Contrastors

Made from black anodised aluminium gives instant contrast to your conventional and digital photographs, while eliminating unwanted elements. Autoclavable to 134°C. Pack of 2.

Upper (Wide & Narrow)	QVX782
Lower (Wide & Narrow)	QVX784



### Nichrominox Photographic Mirrors

Autoclavable to 134°C. Each.

Adult Occlusal	QVX760
Child Occlusal	QVX761
Lingual	QVX764



### Nichrominox Photographic Blades

Stainless steel. Each.

Small	QVX765
Large	QVX766



### UnoDent Cheek Retractor Maxee

Autoclavable double ended buccal cheek retractor. Very clear material, excellent for photography. Child, Teen, Adult. Each.

Teen DRO310  
Adult DRO311  
Child DRO309



### UnoDent Cheek Retractors Double Ended

Retractors Sized for adult or child. Durable plastic design. Sterilisable up to 132°C. Each.  
DRO211



### UnoDent Cheek Retractor Stainless steel

Adult and child. Sterilisable. Each.  
DRO215



### UnoDent Cheek Retractors Long Handle

Autoclavable up to 121°C. Pack 2.

Adult DRE130  
Child DRE140



### UnoDent Cheek Retractor Kombee

Double-ended occlusal & buccal cheek retractor. Autoclavable. Each.

Small DRS000  
Large DRS001



### UnoDent Cheek Retractor Double Ended

Cold Sterilisable. Easily holds lip and cheeks for maximum view of posterior. Smooth edges for maximum patient comfort. Adult. Pack 2.

Adult DRE155  
Child DRE150



### UnoDent Soft Lip & Cheek Retractor

Soft material allows greater flexibility. Excellent for photography - does not reflect light. Allows full view for direct bonding. Cold sterilisable. Each.  
DRO105



### UnoDent Extraoral Cheek Retractor Extended tabs

Allows cheek to be pulled back. Great view of anterior and posterior teeth. Autoclavable. Each.

Adult DRO111  
Child DRO110



### UnoDent Lip and Cheek Retractors

Full view for direct bonding of anterior and posterior teeth. Does not reflect light from flash. Autoclavable. Pack 2.

Adult DRO102  
Teen DRO101  
Child DRO100



### Medesy Cheek Retractor Metal

Double Ended Metal Cheek Retractor. Autoclavable. Two sizes in one. Adult & Child. Each.  
DRO320



### Cheek Retractors Pigeon

Polypropylene Material. More durable than Polycarbonate. Autoclavable. Ergonomic. Each.

Small DRO313  
Medium DRO312



### Hager & Werken Cheek Retractors Mirahold

Long handle for free working area. Autoclavable. Child - 11cm or Adult - 12.5cm. Pair.

Adult DRE320  
Child DRE310



### Hager & Werken Spandex Cheek and Lip Retractor

Soft contoured plastic for optimal patient comfort. Allows a free view and working field. "soft touch and feel" which makes bond ups a little more tolerable. Photo optimized. Made of non-reflecting plastic. Autoclavable. Each.

DRO316

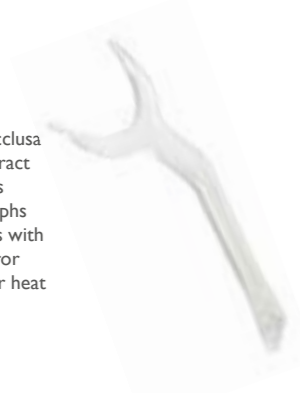




### Ortho Technology Retract eez

Provides maximum exposure for occlusal photographs. Angled bend helps retract lips. Smooth rounded edges. Enables assistants to take occlusal photographs while patient retracts their own lips with one hand & holds an intra-oral mirror with the other hand. Can be cold or heat sterilised up to 143°. Each.

DRS010



### Gestenco Lip Retractor

Ideal for occlusal photography. Holds the lips out of the way during photo sessions or bonding. Autoclavable - max temperature 134°. Each.

Adult DRS013

Child DRS014



### G&H Cheek Retractors with extensions

Soft material for patient comfort. Full function design. Includes handles which may be held by the patient. Effective for intra-oral photos as well as bonding. Autoclavable up to 134°C. Each.

DRO317



### Reliance Cheek Retractors High Heat

- Unparalleled Access
- Steel Bow for tension adjustment
- Sterilized by Autoclave or High Heat up to 187°C.

Each

Child DRE025

Adult DRE026



### Nola Nola Dry Field System

Obtain a totally dry field for the entire arch without drugs, absorbing pads and cotton rolls

#### Features:

- Full arch dry field
- Maximum access

#### Use for:

- Fixed Appliance Bonding
- Pit & Fissure Sealants
- Bleaching
- Bonding Veneers

Large - White

DRO004

Small - Red

DRO006



### Individual Components

#### Adaptors

4 x adaptors & 4 x Y connectors.

Low volume suction 4 pack DRO014

High volume suction 4 pack DRO016

#### Y connector

Pack 4.

Y Connector DRO018

#### Tubing

Pack 10.

Silicon Tubing DRO020



### Patient Relief Wax

Medical grade patient relief wax.

Ideal for fast, temporary relief from fixed brackets and appliances. The box design is small with rounded edges for patient convenience. UK Manufacturer 5 wax strips per case. Pack 50

Unscented	JWP025
Mint	JWP026
Assorted Flavours	JWP027



### G&H Patient Relief Wax Unscented

European Medical Device Directive compliant. Provides patient relief from most sources of contact irritation that may occur during orthodontic treatment.

- Specially formulated to stay in place and not dry out during use
- Made in the USA
- European Medical Device Directive compliant
- Unscented, Five 2" strips per package
- 100 individually labelled packages per box

JWP110



### Dentsply Sirona Retainer Retrievers

- Remove appliances cleanly and efficiently
- Store in appliance case
- Packaged in individual tamper-proof patient bags
- Pack 10

Tropical Blue	251005
Tropical Green	251006
Tropical Orange	251007
White	251008
Tropical Pink	251010



### Dentsply Sirona Aligner Chewies

A simple solution for properly seating aligners. Provides uniform force in a specific area of the mouth where needed. 2 seaters per patient pack; 10 patient packs per bag.

Bubblegum	251021
Grape	251024
Mint Green	251020
Pineapple	251023
Plain	251022



### UnoDent Orthodontic Retainer Boxes

Assorted. Ventilated for improved hygiene and comes with a hole for a carrying cord. Sturdy construction and fully autoclavable.

Supplied in a pack of various colours as follows: Green, Orange, Azure Blue, Fuchsia, Yellow/Lime, White, Purple, Red. Pack 8.

YOM200



### G&H Retainer Boxes

Assorted 15 Multi-Colour Pack 50.

YOM370



### Bestdent Retainer Boxes

Assorted. Small or deep size. Pack 24.

Small	YOM374
Deep	YOM380



### Plaksmacker Pearlised Retainer Boxes

Assorted. Pearlised design. Pack 24.

YOM352



### Dentsply Sirona Retainer Brite

Cleans and brightens retainers, nightguards, mouthguards, splints and most other removable dental appliances.

- Helps remove plaque & tartar
- Kills germs & bacteria
- Keeps appliance minty fresh

Pack 36 - 1 month supply  
YOM255

Pack 96 - 3 month supply  
YOM256



**DD Ortho  
Orthodontic Retainer  
Home Care Kit**

Once patients have had their braces removed, this homecare pack contains a unique range of products to help patients clean and care for their Hawley or vacuum formed orthodontic retainers.

PZS065



**DD Ortho  
Fixed Brace  
Home Care Kit**

An ideal selection of products to help your patients look after their new fixed brace, and also to help them maintain good oral hygiene, during orthodontic treatment.

PZS060



**DD Ortho  
Fixed Brace  
Home Care Kit**

This unique pack contains the essential items for patients undergoing treatment with Invisalign, Clear-Step, or similar clear aligners. Helps patients clean and care for their aligners as well as maintaining good oral hygiene. A great give-away to add value to your patients' treatment.

PZS062



**DD Ortho  
Mini Aligner  
Home Care Kit**

This pack has been put together to help aligner patients remove their aligner clean thoroughly, and then re-seat back in mouth.

PZS063



**Orthocare  
Swirl Plus**

A new and improved formula contains a special blend of natural mint oils to create a Cool Refreshing Peppermint Flavour

- Fluoride Releasing
- Alcohol Free
- 0.05% Sodium Fluoride
- Made in the UK
- Not tested on animals
- Bottle and cap made from recyclable plastic
- Suitable for Vegans

PZS064



**TePe  
Orthodontic Kit**

Fixed appliances require thorough and careful cleaning. The TePe Orthodontic Kit includes specialist cleaning products selected to enable patients to clean all areas of their braces, as well as keeping their teeth and gums healthy. Featuring samples of a variety of products, your patients will be able to try out various combinations to choose the best match for their personal requirements.

PAT047



**TePe  
TePe Implant/  
Orthodontic  
Toothbrush**

This special toothbrush for implant and orthodontic care has soft filaments in two rows, an extra narrow brush head and a long, thin neck, which facilitates access and cleaning close to implants and orthodontic wires.

PAT050





### Curaprox Ortho Hygiene Kit

Helps patients keep their braces clean and free from plaque.

Contains:

- 1 x CS 5460 ortho
- 1 x CS 1009 single
- 1 x Ortho Pocket Set (CPS07,14,18)
- 1 x Ortho wax

Each.

PZS040



### Vitis Fixed Brace Premium Kit

Contains:

- 1 x VITIS Mouthwash 500ml
- 1 x VITIS Toothpaste 100ml
- 1 x VITIS Access Orthodontic Toothbrush
- 2 x VITIS Wax
- 1 x Dent-O-Care Interspace Brush
- 1 x Interprox Plus Conical Interdentals 6'
- 1 x Mouth Mirror
- 1 x 2 Minute Timer
- 4 x Disclosing Tablets
- 1 x Instruction Manual
- 1 x Wash Bag

Each.

PZD020



### Reliance Skyper Eyewear

Low profile. Each.

2A8976



### Euronda Monoart Protective Glasses Light Orange

Fits over Glasses.

2A8980



### Medesy Orthodontic Ruler

Narrow width for ease of use.  
Stainless Steel. 6". Each.

2A5955



### Gestenco Overbite Ruler

Aluminium ruler for easy  
measuring of overbite. Each.

DPI365



### UnoDent Mitchells Trimmer

Octagonal Handle -  
Autoclavable - 4 Carver  
Osteo-Mitchell DE.

DCC170



### Pelz Orthodontic Short Probe

Each.

DPR750



More Pelz products available

### MDDI Disposable Orthodontic Exam Kits

The MDDI range of sterile, single-use dental instruments are designed to assist in reducing both cross contamination risks and reprocessing costs from your surgery. MDDI sterile single-use kits feature high quality, precision made dental instruments with stainless steel tips and ergonomic latex free handles. All kits are CE and TGA certified and arrive at your surgery individually packaged, sterile and ready for single-use.

Probe No 8 Kit

Contains: Front Face Mirror with Percussion Tip, No.8 Probe with CPITN-C (WHO) Probe, Orthodontic Ruler (150mm). Pack 100.

DPR298

Perio Probe/Sickle Kit

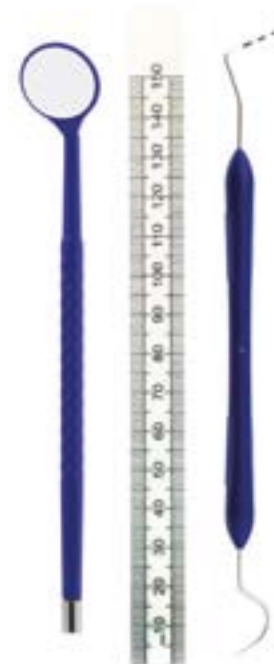
Contains: Front Face Mirror with Percussion Tip, Perio Probe/Sickle, Orthodontic Ruler (150mm). Pack 100.

DPR297

Disposable Sterile Ruler

Pack 125.

DPR316



### Digital Caliper

Precision Measuring, depth & step measurements. LCD Display showing up to 2 decimal places in Millimeters. Stainless Steel Construction. Each.

DPI403



### UnoDent Double Ended Ligature Director

Autoclavable Octagonal Handle. Each.

DPI310



### UnoDent Bonding Tweezers Serrated

High quality steel. Meets ISO standards. Bracket locating tweezers, serrated with alignment. Each.

DPI391



### UnoDent Bonding Tweezers Plain

High quality steel. Meets ISO standards. Bracket locating tweezers with alignment. Each.

DPI390



### UnoDent Direct Bond Placement Instrument

Reverse action, will not release bracket until required. Each.

DPI311



### UnoDent Direct Bond Tweezers

Stainless steel. Reverse action, specifically designed for accurate posterior placement of brackets or tubes. Each.

DPI332



### UnoDent Keats Buccal Tube Tweezer

Ideally suited to bonding molars. Will not release bracket until required. Each.

Regular DPI357  
Reverse Action DPI410



### UnoDent Separating Plier

Each.

DPI330



### UnoDent Mosquitos Haemostat with Hole

A grooved tip gives a non-slip grip when placing elastic ligatures. The Hole at the tip eliminates stress on the elastomeric ligature. Each.

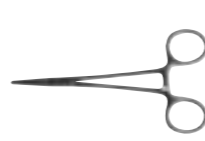
DPI362



### UnoDent Mosquitos Straight 5"

Autoclavable. Each.

DFO222



### UnoDent Mosquitos Curved 5"

Artery Forceps. Autoclavable. Stainless Steel. Each.

DFO221



### UnoDent Mathieu Pliers Narrow Tip

Narrow tip designed for easy placement of elastic modules. Heat sterilisable up to 370F/ 188C. Each.

DNE165



### UnoDent Mathieu Pliers

For placement of elastic modules or stainless steel ligature ties. Heat sterilisable up to 370F/ 188C. Each.

DNE170



### UnoDent Mershon Band Pusher

Stainless steel construction. For final seating of Bands. Each.

DPI313



### Medesy Mosquitos Haemostat

Fine tipped and a positive quality ratchet clip. Use for modules or standard applications. 125mm. Stainless Steel. Each.

Straight DPT090  
Curved DPT091



Lingual recommended

### Pelz Fine Mosquito

For easy placement of elastic modules (especially lingual) Serrated tips for positive gripping. Each.

Curved DPI706



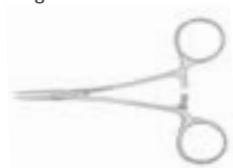
Lingual recommended



### Hu-Friedy Halsted-Mosquito Haemostat

To clamp off blood vessels, remove small root tips and grasp loose objects. Each.

4 Straight DFO351



### UnoDent Mauns Cutter

Heavy Duty Autoclavable Wire Cutters. Cuts Lab wire up to 1mm. Each.

DCV300



### UnoDent Tweezers Curved

College Curved. Stainless steel. Autoclavable. Each.

DTW310



### UnoDent Adams Plier 64 Spring former 65

Autoclavable. Stainless steel. Each.

64 DPI164

65 DPI165



### UnoDent Tweezers Locking Angled

College Angled. Stainless steel. Autoclavable. Each.

DTW318



### UnoDent Tweezers Angled

College Angled. Stainless steel. Autoclavable. Each.

DTW312



### UnoDent Dividers

Autoclavable. Stainless Steel. Each.

DPI364



### Hu-Friedy Universal Cut & Hold Distal End Cutter

Cuts all types of wires ranging from .012" (.30 mm) to .021" x .025" (.53 mm x .64 mm). When used intraorally it safely holds the cut portion to be discarded. Smooth, tapered tip. Each.

Long Handle DPI504

Regular Handle DPI534



### Hu-Friedy Flush Cut & Hold Distal End Cutter

Cuts and holds wire distally flush to the buccal tube or bracket while reducing debondings. Designed for all types of wire up to a maximum of .020" (.51 mm). Comes with 1 silicone insert already loaded in the working end. 2 extra inserts included. Each.

DPI536



### Hu-Friedy Pin & Ligature Cutter

Designed to cut soft wire pins and ligature wires up to .015" (.38 mm). Each.

DPI502



### Hu-Friedy Adhesive Removing Pliers

Ortho Adhesive Removing Pliers Reversible. Replaceable blade. Used to remove the bulk of composite material after debonding attachments.

DPI512



### Hu-Friedy Hard Wire Cutter

Designed to cut hard wires up to .022" x .028" (.56 mm x .71 mm). Each.

DPI530



### Hu-Friedy Bracket Removing Pliers

Works well for steel, ceramic and plastic brackets of all types. Each.

DPI520



### Hu-Friedy Band Removing Pliers

The alignment of the tips and occlusal pad is well suited for band removal. Each.

Short Posterior	DPI514
Long Posterior	2A5390
Slim Posterior	2A5371

Replacement Pads  
3/16" (4.8 mm) pads.  
For: 2A5390 (678-207),  
2A5391 (678-208),  
Posterior Band  
Removing Pliers  
(678-503)  
2A5442



### Hu-Friedy Hollow Chop Pliers

Perfect for subtle contouring of arch wires up to .030".  
DPI500



### Hu-Friedy Adams Pliers

Excellent precise right angle bends and appliance adaptation. Wires up to .040" (1.02 mm). 678-320.  
DPI528



### Hu-Friedy Bird Beak Pliers Light Wire

A longer cone than a standard bird beak. Useful for forming precise loops in light wires up to .020" (.51 mm). Wire size: <= .020" (.51 mm).  
Without Groove DPI535  
With Groove DPI524



### Hu-Friedy Bird Beak Pliers

Versatile loop forming pliers for round wires up to .030" (.76 mm).  
2A5396



### Hu-Friedy Three Jaw Pliers

Useful for contouring and bending wires up to .030" (.76 mm).  
DPI522



### Hu-Friedy Three Jaw Pliers Niti

Designed for the forming and contouring of all archwire, especially for nickel titanium wires up to .020" (.51 mm).  
DPI540



### Hu-Friedy Tweed Torquing Pliers

Rectangular. For placing first, second and third order bends. .070" (1.78 mm) blade width, on wires up to .022" x .025" (.56 mm x .64 mm). Each.  
DPI526



### Hu-Friedy Hammer Head Pliers

Multi-use bender for bending NiTi up to .025" (.64 mm). Tie-back NiTi with no heat. Each.  
DPI541



### Hu-Friedy Step Pliers

Double-sided offset beak permits bayonet bends on wires up to .022" x .025" (.56 mm x .64 mm). Each.

1/2mm	2A5438
3/4mm	2A5440
1mm	2A5439





### Hu-Friedy Mathieu Pliers

Narrow Tip. Slimmer tip makes this ideal for gripping and placing elastic auxiliaries. Each. DNE200



### Hu-Friedy Mathieu Perma Sharp Pliers

Mathieu Pliers with Perma Sharp inserts. Each. DPI553



### Hu-Friedy Ligature Director/ Tucker

A double ended hand instrument on #41 handle, combining a tucker and a ligature director. Each. DPI532



### Hu-Friedy Mosquito Hemostat

4 Straight Halsted-Mosquito Hemostat. Multi purpose instrument. Each. DFO351



## Clear Aligner Collection

### Hu-Friedy Tear Drop

Creates a notch at the gingival margin of clear aligners anywhere elastic hooks are required within the arch. Provides a reservoir to hold the elastics in place as the aligner is seated, permitting easier manipulation of elastics by the patient. Each. DPI542



### Hu-Friedy Vertical

Emphasizes over-correction of rotations by producing an indentation at the mesial or distal line angles on the facial and/or lingual of a specific tooth. Each. DPI543



### Hu-Friedy Horizontal

Enhances retention of either clear aligners or retainers by placing an indent into a tooth's undercut or below a bonded attachment. Each. DPI544



### Hu-Friedy Hole Punch

6mm. Creates half-moon cutouts for relief of clear aligners around bonded buttons used for elastics. Nips away plastic to provide soft tissue clearance to prevent aligner impingement of tissue. Each. DPI545





**Distal End Cutters**

Medesy  
**Distal End Cutter**  
3000/69 TC

Max wire diameter:  
21x25. Each.  
2A5852



Medesy  
**Distal End Cutter**  
3000/74TC

Cuts wire flush to the buccal tubes to avoid wire pokes. Max wire diameter: 21x25. Each.  
Flush Cut Slim Head DPT092



Medesy  
**Distal End Cutter**  
3000/76TC

Cuts wire flush to the buccal tubes to avoid wire pokes. Max wire diameter: 21x25. Each.  
Flush Regular Head DPT093



**Hard Wire Cutters**

Medesy  
**Hard Wire Cutter**  
3000/18TC

For cutting archwires of any size with a 15° offset. Max wire diameter: .040"/1.0mm. Each.  
DPT120



Medesy  
**Hard Wire Cutter**  
3000/87TC

For cutting archwires of any size. Max wire diameter: .027"/0.7mm. Each.  
DPT131



Medesy  
**Hard Wire Cutter**  
3000/87TC

15° offset. Max wire diameter: .027"/0.7mm. Each.  
2A5858



Medesy  
**Hard Wire Cutter**  
3000/94TC

Medium cutter with rounded slim tip 15° offset. Max wire diameter: 016"/0.4mm. Each.  
DPT132



**Pin & Ligature Cutters**

Medesy  
**Pin & Ligature Cutter**  
3000/85 TC

Standard Cutter with slim profile. Max wire diameter: 012"/0.3mm. Each.  
DPT083



Medesy  
**Mini Pin & Lig Cutter**  
3000/89 TC

Delicate Cutter, specifically for the removal of soft stainless steel ligatures. Max wire diameter: 012"/0.3mm. Each.  
DPT086



Medesy  
**Angled Ligature Cutter**  
3000/85 TC 15°

Standard Cutter but with a 15° offset tip. Max wire diameter: 012"/0.3mm. Each.  
DPT084



Medesy  
**Medium Pin & Ligature Cutter**  
3000/99

Medium Cutter. Max wire diameter: 016"/0.4mm. Each.  
DPT089



**Band, Bracket & Adhesive Removal Pliers**

Medesy  
**Adhesive Removing Plier**

Used to remove composite material after debonding. Each.  
2A5956



Medesy  
**Posterior Band Remover**  
Straight TC

For removing bands. Each.  
Short 2A5899  
Long 2A5898



Medesy  
**Bracket Removing Plier**  
Straight

Straight Bracket Remover 135mm. Each.  
DPT128



Medesy  
**Bracket Remover**  
Angled

Angled Bracket remover 135mm.  
2A5902





## Wire Bending Pliers

### Medesy Bird Beak Plier

Used to bend metal strips or wire. 4 grooves to form precise loops. For round, squared or rectangular light wire. Stainless Steel. Max wire diameter: .028"/0.7mm 130mm. Each. 2A5900



### Medesy Adams Pliers

Used to bend metal strips or wire. Each.

125mm TC .028"/0.7mm DPT121  
125mm .040/1mm 2A5891  
120mm TC .040"/1mm 2A5892



### Medesy Tweed Torquing Pliers

For torquing and bending squared wire. Each.

Short 125mm .020"/0.5mm 2A5926  
Long 130mm .028"/0.7mm 2A5923



### Medesy Bird Beak Plier

For all loop forming and general wire bending max wire diameter .028"/0.7mm. 15° angle. 150mm. Each. DPT123



### Medesy 3 Jaw Plier

Slightly rounded tips for contouring & bending. Each.

Short 120mm max.024"/0.6mm 2A5895  
Long 130mm max .028"/.7mm 2A5894



### Medesy Tweed loop forming

Designed to form precise loops. Long grooved beaks. Each.

Short 130mm .020"/0.5mm 2A5927



## Wire Bending Pliers

### Medesy Crimpable Plier 130mm

Used to bend metal strips or wire used in orthodontic work. Secure crimpable hooks. Stainless Steel. Each. 2A5904



### Medesy Weingart Plier 145mm

Versatile utility plier with slim tips and very fine serrations. Stainless Steel. 0.5mm. Each. 2A5931



### Medesy Hammerhead Step Plier 3000/15

Step Plier to produce offset bends in arches. Universal Left/Right. Maximum 021x025"/ 0.55x0.64mm 2A5961



### Medesy Cinch Back Plier

For closing arches or cinch down a wire. Use on round or rectangular wire. Stainless Steel. Max wire diameter: .028"/0.7mm. Each. DPT081



### Medesy Weingart Plier 140mm

Versatile utility plier with very fine serrations. Stainless Steel. Each. 140mm 2A5930  
140mm Angled TC DPT080





## Scissors

### Medesy BeeBee Scissors 110mm

Saw edged. Each.

Curved 2A5941

Straight 2A5940



### Medesy BeeBee Scissors 110mm TC

Saw edged. Each.

Curved TC 2A5942



### Medesy Universal Scissors 125mm

Dental instrument with straight or curved short blades for cutting metal wire and band. Each.

Stainless Steel 2A5946



### Medesy Universal Scissors 125mm TC

Dental instrument with straight or curved short blades for cutting metal wire and band. Each.

TC 2A5947



### Medesy High Performance Scissors

High tempered and cut precision dental instrument with straight or curved short blades for cutting metal wire and bands. Stainless Steel. Each.

90mm 2A5945

110mm 2A5944



## Instruments and accessories

### Medesy Height Gauge Slot 022 150mm

Accurate bracket positioning with all incisal edge heights required for a consistent bond-up. Fits .022 slot Brackets. Each.

Aluminium 2A5851

Stainless Steel 2A5850



### Medesy Ligature Director Mini 672/10.HL8

Used to tuck and direct ligatures under the archwire or bracket wings or to push archwires or auxiliaries into position. Stainless Steel. Each.

2A5876



### Medesy Ligature Director 0 (672/0)

Used to tuck and direct ligatures under the archwire or bracket wings or to push archwires or auxiliaries into position. Stainless Steel. Each.

2A5877



### Medesy Elastic Ligature Applicator 674

Stainless Steel. Double-Ended. Dia 6mm. Each.

2A5864



### Medesy Halstead Mosquito Pliers

Lingual recommended

Serrated beaks which engage ligatures securely. Stainless steel. 125mm. Each.

Straight DPT090

Curved DPT091



### Medesy MicroLube

Lubricant oil for dental instruments in an innovative pen like tube. If used regularly it ensures a long product lifespan and optimal performance: lubricant oil facilitates the smooth and perfect function for all hinged instruments and helps to prevent freezing from corrosion and sediments. Non-toxic, odourless, transparent, silicone free. 12ml. DPT085





## Bracket and Buccal Instruments

### Medesy Bracket Tweezer 1006

Bracket tweezer with positioning blade. Stainless Steel. Each.  
135mm 2A5958



### Medesy Bracket Tweezer 1008

Bracket positioning tweezer. Stainless Steel. Each.  
140mm 2A5952



### Medesy Bracket Tweezer 1009

Bracket positioning tweezer. Stainless Steel. Each.  
140mm 2A5953



### Medesy Bracket Tweezer 1130

Bracket tweezer with wedge positioning blade. Stainless Steel. Each.  
140mm 2A5954



### Medesy Bracket Tweezer 1132

Bracket positioning tweezer with thin tips to position brackets under archwires. Stainless Steel. Each.  
120mm 2A5951



### Medesy Buccal Tube Tweezer 1134

Keats super slim reverse Buccal Tube Tweezers for all molars. Includes wedge positioner. Each.  
140mm 2A5950



## Speciality Lingual

### Pelz Lingual Debonding Plier Anterior, Satin Surface, modified

Lingual debonding plier. Ideal for debonding of lingual brackets in the anterior area. Note: Please check that the screw is always firmly tightened.  
DPI765



### Pelz Cinch Back Plier Long Handle

Serrated jaws. Works perfectly with round NiTi Wires. New Style, bends wires distal of the molar tube. Long handle (142 mm). Working range: NiTi .012 – .017x.025.  
With Serration DPI764  
Without Serration 2A7642



### Pelz Ligature Director Double Ended (Lingual)

Ligature Director with ultra fine tips for use with Incognito, Win and all lingual applications. Effectively engages from size 008 steel ligatures  
DPI705



### Pelz Lingual Tube and Bracket Tweezer Offset Fine - Modified

Angulated, fine, self-locking, with offset. Slim tips for positive grip. One tip fits into the slot of any lingual bracket or buccal tube.  
DPI770





## Applicators and Band Pushers

### Medesy Elastic Engager and Remover

Use without overstretching the ligature under the archwire or bracket wings or to push archwires or auxiliaries into position. Diameter: 6mm. Stainless Steel. Double-Ended. Each.

2A5864



### Medesy Band Pusher/ Scaler

Used for positioning and adapting wire and metal bands on teeth. Each.

2A5842



### Medesy Band Seater/ Bite Stick Teflon Handle

Teflon autoclavable. Used for final placement of metal bands. Handle material: Teflon. Tips material: Stainless Steel. 145mm. Each.

2A5847



### Medesy Band Pusher Mershon

Used for positioning and adapting wire and metal bands on teeth. Stainless Steel. 150mm. Each.

2A5846



### Medesy Mathieu Mini Needle Holder 1850

Used for application of elastic ligatures. Grooved handle. Each.

2A5959



### Medesy Mathieu Ligature Forcep 1851

Used for application of elastic ligatures. Smooth plain handle. Each.

2A5960



### UnoDent A Frame Plier Rack

Blue. Each.  
DPI358



### Unirose Upright Plier Rack

Black. Each.  
DPI351



### OrthoTechnology Archwire Organiser

Archwire holder with cover.  
222503



### Unirose Combination Organiser

Easy for patients to choose colours. Allows for quick inventory. Stores 12 packs of ties & 12 reels of chain. Each.

255560



### G&H Chain Dispenser Aluminium

Measures 3" wide x 8 1/8" long x 3 1/8" high. Stores 12 spools. Each.

256555

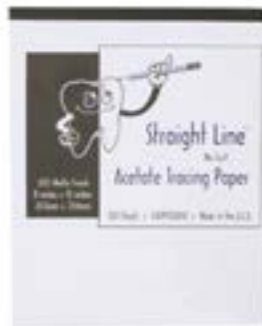






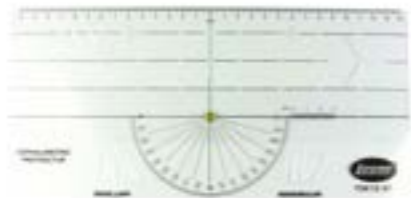
## G&H Cephalometric Tracing Paper

Cephalometric and panoramic, matte finish .003" acetate tracing paper offers excellent pencil adhesion and dimensional stability. Non-curling edges maintain flatness. Matte side accepts pencil or pen markings with excellent contrast clarity. 100 sheets in a 8" x 10" pad. **XXC401**



## Leone Cephalometric Protractor

Adjustable together with molar and incisor templates for all cephalometric analysis. Each. **EXR113**



## G&H Archwire Marker Pencils

Push-button dispenses one pencil on demand. Not water soluble. Single use.

Dispenser	213603
Red Pack 100	700609
White Pack 100	700612



## Acteon Mini LED Ortho 2 Unit Complete

Designed specifically for the Orthodontist. The Mini LED Ortho2 allows full arch curing in seconds without overheating.

### Product Benefits

- Polymerization times totally dedicated for Orthodontists
- Exposure times of 4, 8, 12 and 32 seconds
- Exposure timings specifically configured to go from one bracket to the other or treat an entire arch are also customizable by the user
- Exposure time alert configurable (micro flash, beep, 2 or nothing)
- The absence of UV reduces heat production for maximum comfort and safety
- Durable for a better working comfort
- Can handle 15 patients at maximum power

QCS033



## Acrylic Trimmers

Our Tungsten Carbide Acrylic Trimmers make the trimming of hard materials a breeze. Made from high-grade tungsten carbide they have a strong construction and precision tooling.

Cross Cut Standard



72 77 78 79 251 351

060	-	-	BAT035	-	-	BAT040
060	-	-	-	BAT025	-	-
060	BAT030	BAT000/045	BAT010	BAT020	BAT050	BAT005

Plain Cut Standard



72 77 78 79 251 351

060	-	-	-	BAT127	BAT135	-
060	-	-	-	BAT126	-	-
060	BAT110	BAT130	BAT120	BAT125	BAT140	BAT115



Cross Cut Fine



77 78 79 251 351

040	-	-	BAT086	-	-
045	-	-	BAT080	-	-
060	BAT055	BAT065	BAT075	BAT070	BAT060

Cross Cut Coarse



77 78 79 351

045	-	-	BAT105	-
060	BAT090	BAT100	-	BAT095



77 78 79 351

045	-	-	BAT160	-
060	BAT145	BAT155	-	BAT150





## Danville Micro Etcher IIA

The MicroEtcher IIA provides precise surface micro-roughening, improving bond strength up to 400%. Surface area and surface reactivity are dramatically increased for maximum bond. Sandblasting is fast and easy with most surface roughening procedures requiring only a few seconds. The MicroEtcher IIA offers all stainless steel construction, a replaceable carbide tip, and a permanently affixed jar lid with a spill resistant abrasive filter. Each.

### Features

- Fully autoclavable (except jar & filter)
- 360° degree rotatable and removable nozzle
- Slim Profile nozzle offers better intraoral usability OC22005-01

### Uses

- Etching all metals, composites & amalgam for maximum bond strength
- Aiding in intraoral porcelain repair
- Prepping for pit & fissure restoration
- Cleaning dark grooves to reveal decay
- Prepping incipient lesions and minor Class I & V
- Debriding bur preps for best esthetics & bonds

QYD100



Quick Surgery Connector  
4 Hole. Each.  
QYD110

## KaVo Rondoflex

Lingual Applications

Non-AGP procedure

Air-abrasion system with spray. The KaVo RONDOflex plus is the clean alternative to conventional air-abrasion devices. Highly efficient, clean working, with ease of handling, precise targeting and the best possible protection for healthy dental tissues. Provides treatment with no drilling, no injection, no noise, no vibration and no unpleasant sensation in the mouth. May be used with or without water to ensure a non-agp setting.

### Uses

- Cavity preparation with minimum invasion
- Clearing out fissures
- Preparing surfaces for bonding
- Removing current cement residues from crown and bridges - extra orally
- Excellent for tooth preparation with WIN, Incognito Lingual appliances and bonded retainers

RONDOflex Powder  
27 micron.  
Green.  
1kg.  
QYK052



### Contents

- 1 x Powder container for 50 µm
- 1 x Powder container for 27 µm
- 2 x Powder container cover
- 1 x Cleaning drill
- 2 x Nozzle pin
- 1 x Abrasive powder 27 µm 75g
- 1 x Abrasive powder 50 µm 75g
- 1 x Cannula 110° :0.46 mm
- 1 x Cannula 110° :0.6 mm
- 1 x Key for fixing the Cannula engager

QYK055



## UnoDent Orthoblaster

Sandblaster for use with enamel surfaces to microetch.

### Features

- Fully autoclavable
- Index finger controlled operating valve
- For right or left handed operators
- Unique ratchet system
- In-line high pressure stopcock provided for ease of connection
- Simple installation kit
- 50 micron abrasive grit included
- Limited warranty will be honoured up to 12 months from date of purchase



- Accessories
- Clear Tubing For Orthoblaster QYU057
- Extension Nozzle for Orthoblaster QYU055
- Ortho-Blaster Replacement Bottle Complete QYU065
- Stop Cock For Orthoblaster QSD190

## Deldent Aluminium Oxide 50 Micron

For all your Sandblasting needs. Pure white aluminum oxide in a plastic bottle. 50 micron grit size. 50 micron grit surface enhancement prior to bonding to increase bond strength. For use in the Deldent Miniblaster and all other sandblasters. 1kg. QYU061



## Deldent Dust Inn 2000 Dust Collector

Compact & Lightweight. Ideal for the dental surgery or small dental lab. The Unit is fitted with a quiet efficient fan extractor system with easily exchangeable filters it has hygienic wipe-down design. QYV028





## Six Month Smiles System

DD in partnership with Six Month Smiles, DD hold inventory, consumables and accessories for the Six Month Smiles system.

### Six Month Smiles Lucid-Lok Brackets

Single re stocking Lucid-Lok brackets.  
Each.



Upper			
UR1	400055	UL1	400054
UR2	400057	UL2	400056
UR3	400059	UL3	400058
	UNIV 4/5		400063
Lower			
LR1/2	400060	LL1/2	400060
LR3	400062	LL3	400061
	UNIV 4/5		400063

### Six Month Smiles Molar Tubes

Available in packs 10.



Type	Code
UL/LR	400052
UR/LL	400053



More Six Month Smiles products available. Just scan the QR code with your phone or click.



### Six Month Smiles Plain Wires

NiTi or Beta Titanium  
Pack 10.

Round	Code
014 NiTi	400040
016 NiTi	400041
018 NiTi	400042
018 BT	400048
016 BT	400049
Rectangular	Code
16x22 NiTi	400043
16x22 BT	400047



### Six Month Smiles Tooth coloured Wires

NiTi or Stainless Steel.  
Pack 10.

Round	Code
012 NiTi	400033
014 NiTi	400034
016 NiTi	400035
018 NiTi	400036
Rectangular	Code
16x22 NiTi	400038
18x25 NiTi	400039
16x22 SS	400045
18x25 SS	400046

### Back up Inventory

#### Five Case Kit including Archwires

Pack 5.  
400000

#### Carousel with Tubes

Pack 5 400002  
Pack 1 400003

#### Wire Refill Kit

014, 016, 018 and 16x22  
tooth coloured wires.  
400001



### Accessories & Consumables

#### Lucid-Lok Composite Clearlet

Pack 10.  
400006

#### Metal Lingual Button

Pack 10.  
400005

#### Eyelet Bracket

Each.  
400004



## Instrument Sharpening Service

At DD, we have a team of friendly qualified technicians that can sharpen or repair your orthodontic instruments in a way that's easy and convenient for you and your practice.

### Our services includes:

- Re-Sharpener and Profiling (splayed instrument repair).
- Re-tipping on a service exchange basis if re-sharpening is not successful, (on a like for like basis) on most major brands.
- Re-shimming of the hinge if required.
- Broken screws replaced at extra cost.
- Re-polishing to a near new condition.
- We repair instruments from the majority of the world-wide Orthodontic instrument manufacturers.

### We offer repair on most types of orthodontic plier including:

- Distal end cutters, ligature and hard wire cutters re-sharpened or re-tipped.
- Bracket and Band removers re-sharpened and delrin pads replaced
- Weingarts re profiled
- Sharpening and Re-profiling
- Instrument Re-Tipping

For more information on the service offered please call the **DD service and repair team** on **01253 600090** (option 1).

## Instrument Sharpening Orthodontic Plier Sharpening Service Pack

91112



# Index

## A

Accessories 56  
Acrylic Trimmers 9  
Adhesive 41-49  
Aesthetic attachments 25  
Air-abrasion 98  
Alginate 52  
Aluminium Oxide 101  
Applicators 87  
Archwires 10-20  
Arcylic trimmers 96  
Auxiliaries 29

## B

Band Pusher 89  
Bands 5  
Barrier Gel 42  
Bonding 41-48  
Bonding Resin 43  
Brackets 4, 6, 102  
Brushes 74  
Buccal Tubes 7, 85  
Burs 50, 51, 59  
Buttons 24

## C

Caliper 77  
Chain 28  
Cheek Retractors 65, 67  
Chewies 71  
Cleats 22  
Coil Springs 29, 30  
Composite 25  
Composite Removal 46

Conditioner 42, 47  
Contrastors 64  
Cure Cooler 40  
Curing Lights 101  
Cutters 78, 79, 85

## D

Debonding 50, 51  
Diagnostic 69, 95  
Discs 62  
Dispensers 94, 95  
Dry Field System 68  
Dust Collector 99  
Dynamlink 31

## E

Elastics 37, 38  
Elastomers 31-37  
Eruption Appliances 28  
Eyelet 25  
Eyewear 101

## F

Finishing 50

## G

Genius System 10-13  
Glasses 101  
Gripper Hooks 26  
Gripper Stops 26

## H

Height Gauge 91  
Hemostat 83  
Hole Punch 84  
Hooks 26

## I

Impression 52-55  
Instruments 76-93  
Instrument Sharpening 104  
Intra Oral Elastics 37  
IPR 57-62

## K

Kobay Hook 23

## L

Lab Products 96  
Ligature Director 91, 93  
Ligatures 23, 24  
Lingual Buttons 24  
Lingual Modules 36  
Lingual Retention 49

## M

Marker Pencils 22, 95  
MicroLube 91  
Mirrors 63, 64, 69  
Mixer 56  
Modules 36

Molar Tubes 102  
Mosquitos 78, 79  
Mouthguards 72

## O

Oral Care 72-75  
Oral Hygiene 72-75  
Organisers 94  
Ortho Strips 59, 60

## P

Patient Care 72-75  
Pencils 22, 95  
Photography 63, 65, 67  
Pliers 77-93  
Primer 42, 45  
Probe 76  
Projet 55  
Protractor 95  
Pumice 43

## R

Rack 94  
Retainer Boxes 72  
Retainer Wire 49  
Retention 49  
Retractors 65-67  
Retrievers 71  
Rotation Wedges 36  
Ruler 76

## S

Sandblaster 99  
Scissors 90

Sealant 39  
SEP 45  
Seperators 36  
Silver Motion Distalizer 14  
Six Month Smiles 102, 103  
Small Surgery Equipment 98  
Springs 29, 30  
Stealth 6-8  
Stops 26  
Strips 58-61

## T

TKO 45  
Toothbrushes 74  
Tracing Paper 95  
Trays 52-54  
Tweezers 77, 78, 79, 92

## U

Ultra SEP 45

## V

Versaties 31

## W

Wax 56, 71  
Wire Bending Pliers 88, 89  
Wire Products 23, 25, 27  
Wires 103



## Orthodontic Collection

Ordering Code: YSZ922

Specialist Helpdesk  
01274 581058  
[orthodontics@ddgroup.com](mailto:orthodontics@ddgroup.com)

DD Sales  
0800 585 586

[www.ddgroup.com](http://www.ddgroup.com)

Also available: Aligner Accessories Collection YSZ925