



# Orthodontics

[Click the product codes to view more information](#)

## Photography



### **Intraoral Photo Mirror - Chromium Coated**

Palatal Adult, Palatal Child, Buccal, Lingual or Palatal XL. Each.

XXO001 - XXO005



### **Intraoral Photo Mirror - Stainless Steel**

Adult & Child Palatal, Buccal, Lingual Upper & Lower. Adult Palatal & Buccal.

Autoclavable. Each.  
XXO031 - XXO035



### **Maxee Cheek Retractor**

Child, Teen, Adult. Autoclavable. Each.

DRO309 - DRO311



### **Kombee Cheek Retractor**

Small or large. Autoclavable. Each.

DRS000, DRS001



### **Cheek Retractors - Long Handle**

Adult or Child. Autoclavable up to 121° C. Pack 2.

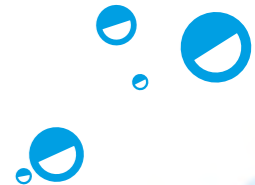
DRE130, DRE140



### **Lip Retractor Long Handled**

Child. Autoclavable. Each.

DRS011



# Photography



**Extraoral Cheek Retractor - Extended tabs**

Child or Adult. Autoclavable. Each.  
DRO110, DRO111



**Lip and Cheek Retractor**

Child, Teen, Adult. Autoclavable. Pack 2.  
DRO100 - DRO102



**Soft Lip & Cheek Retractor**

Cold sterilisable. Each.  
DRO105



**Photo Cheek Retractor - Double Ended**

For adult or child. Sterilisable up to 132°C. Each.  
DRO211



**Cheek Retractor - Stainless steel**

Adult and child. Sterilisable. Each.  
DRO215



# Disposable Impression Trays



**Paedo - Red**

Pack 50.  
Upper IIO051  
Lower IIO061



**X Small - Orange**

Pack 50.  
Upper IIO052  
Lower IIO062



**Small - Blue**

Pack 50.  
Upper IIO053  
Lower IIO063



**Assorted Packs**

Contains 6 sizes, with 10 trays of each size. Pack 60.  
Upper IIO070  
Lower IIO080



**Medium - Green**

Pack 50.  
Upper IIO054  
Lower IIO064



**Large - Yellow**

Pack 50.  
Upper IIO055  
Lower IIO065



**X Large - Purple**

Pack 50.  
Upper IIO056  
Lower IIO066



**Orthodontic Alginate**

Strawberry. Extra fast setting. Tear resistant. 453g.  
IAA315

# Professional Patient Kits & Bracket Systems

## Professional Brackets

Our professional brackets provide unmatched strength, slot accuracy and polished surface smoothness - ensuring free sliding archwires with zero wire notching. Available in MBT & Roth .022 slot technique systems.

- MIM Manufacturing Process
- Strong slot and hooks
- Accurate archwire slot
- Smooth finish - Reduced Friction
- Colour coded markings - easy quadrant identification
- 80-gauge mesh base - excellent retention
- Ample under tie-wing area - easy ligature placement
- Available with gingivally offset lower bicuspids and incisors on a larger offset bonding pad to prevent debonding due to occlusal interference.



### Single Patient Kits

	MBT	Roth
U&L 5-5 hooks on 3, 4, 5	UOB056	UOB025
U&L 5-5 hooks on 3's	UOB057	UOB026
U&L 6-6 Off-set pads & hooks on 3, 4, 5	UOB058	-
U&L 6-6 hooks on 3's, LP Tubes	UOB100	-
U&L 6-6 hooks on 3's Offset Base, LP Tubes	UOB101	-

## Why you love UnoDent

"I have been using the Unodent Brackets and LP buccal tubes for the past 3 years with excellent finishes. They are high quality and comparable with other more expensive brackets and tubes and I have had no problems with bond failures and deliver exactly to their torque prescription."

Dr R.R Mahesh  
M-Brace Orthodontics Scotland

### Upper MBT

	Left	Right
Central	UOB027	UOB035
Lateral	UOB028	UOB036
Cuspid	UOB029	UOB037
Cuspid - hook	UOB030	UOB038
1st Bicuspid	UOB031	UOB039
1st Bicuspid - Mesial hook	UOB032	UOB040
2nd Bicuspid	UOB033	UOB041
2nd Bicuspid - Mesial hook	UOB034	UOB042

### Upper Roth

	Left	Right
Central	UOB000	UOB007
Lateral	UOB001	UOB008
Cuspid	-	-
Cuspid - hook	UOB002	UOB009
1st Bicuspid	UOB003	UOB010
1st Bicuspid - Mesial hook	UOB004	UOB011
2nd Bicuspid	UOB005	UOB012
2nd Bicuspid - Mesial hook	UOB006	UOB013

### Lower MBT

	Left	Right
Anterior	UOB043	
Cuspid	UOB044	UOB048
Cuspid - hook	UOB045	UOB049
1st Bicuspid	UOB052	UOB053
1st Bicuspid - Distal hook	UOB046	UOB050
2nd Bicuspid	UOB054	UOB055
2nd Bicuspid - Distal hook	UOB047	UOB051

### Lower Roth

	Left	Right
Anterior	UOB014	
Cuspid	-	-
Cuspid - hook	UOB015	UOB018
1st Bicuspid	UOB021	UOB022
1st Bicuspid - Distal hook	UOB016	UOB019
2nd Bicuspid	UOB023	UOB024
2nd Bicuspid - Distal hook	UOB017	UOB020

### Lower MBT Offset Pads

	Left	Right
Anterior	UOB102	
1st Bicuspid	UOB103	UOB104
1st Bicuspid - Mesial hook	UOB075	UOB078
2nd Bicuspid	UOB077	UOB080
2nd Bicuspid - Mesial hook	UOB076	UOB079



Bands are available on request

# Buccal Tubes



## Professional Buccal Tubes

- MIM Manufacturing Process
- 80 Gauge mesh base ensuring excellent bond strength
- Colour coded markings for each quadrant

## Professional Low Profile Buccal Tubes

- Ultra Low Profile Design - LP Buccal Tubes Offer maximum comfort to the patient
- MIM manufacturing process
- Funneled entrance assists in easy wire insertion
- 80-gauge mesh base with anatomical contour ensures precise fit and excellent bond strength
- Permanent numbered quadrant identification marking

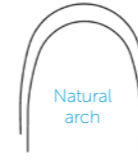
	MBT .022 Slot	Roth .022 Slot
UL6	UOB063	UOB059
UR6	UOB064	UOB060
LL6	UOB065	UOB061
LR6	UOB066	UOB062

	MBT LP .022 Slot	Roth LP .022 Slot
UL6	UOB071	UOB067
UR6	UOB072	UOB068
LL6	UOB073	UOB069
LR6	UOB074	UOB070
UL7	UOB091	UOB095
UR7	UOB092	UOB096
LL7	UOB093	UOB097
LR7	UOB094	UOB098



# Archwires

NiTi  
Pack 10



Round	Upper Natural	Upper Euro	Lower Natural	Lower Euro
0.012	UOW111	UOW121	-	UOW126
0.014	UOW112	UOW122	UOW117	UOW127
0.016	UOW113	UOW123	UOW118	UOW128
0.018	UOW114	UOW124	UOW119	UOW129
0.020	UOW115	UOW125	UOW120	UOW130

Rectangular	Upper Natural	Upper Euro	Lower Natural	Lower Euro
16x16	UOW131	UOW147	UOW139	UOW155
16x22	UOW132	UOW148	UOW140	UOW156
17x22	UOW133	UOW149	UOW141	UOW157
17x25	UOW134	UOW150	UOW142	UOW158
18x22	UOW135	UOW151	UOW143	UOW159
18x25	UOW136	UOW152	UOW144	UOW160
19x25	UOW137	UOW153	UOW145	UOW161
21x25	UOW138	UOW154	UOW146	UOW162

NiTi - Individually Wrapped  
Pack 10



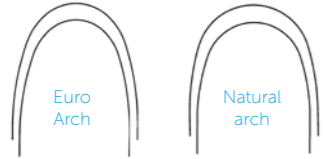
Round	Upper Natural	Upper Euro	Lower Natural	Lower Euro
0.012	UOW170	UOW180	UOW175	UOW185
0.014	UOW171	UOW181	UOW176	UOW186
0.016	UOW172	UOW182	UOW177	UOW187
0.018	UOW173	UOW183	UOW178	UOW188
0.020	UOW174	UOW184	UOW179	UOW189

Rectangular	Upper Natural	Upper Euro	Lower Natural	Lower Euro
16x16	UOW266	UOW282	UOW274	UOW290
16x22	UOW267	UOW283	UOW275	UOW291
17x22	UOW268	UOW284	UOW276	UOW292
17x25	UOW269	UOW285	UOW277	UOW293
18x22	UOW270	UOW286	UOW278	UOW294
18x25	UOW271	UOW287	UOW279	UOW295
19x25	UOW272	UOW288	UOW280	UOW296
21x25	UOW273	UOW289	UOW281	UOW297

# Archwires

## Heat Activated NiTi

Pack 10



Round	Upper Natural	Upper Euro	Lower Natural	Lower Euro
0.012	UOW210	UOW220	UOW215	UOW225
0.014	UOW211	UOW221	UOW216	UOW226
0.016	UOW212	UOW222	UOW217	UOW227
0.018	UOW213	UOW223	UOW218	UOW228
0.020	UOW214	UOW224	UOW219	UOW229

Rectangular	Upper Natural	Upper Euro	Lower Natural	Lower Euro
16x16	UOW230	UOW250	UOW238	UOW258
16x22	UOW231	UOW251	UOW239	UOW259
17x22	UOW232	UOW252	UOW240	UOW260
17x25	UOW233	UOW253	UOW241	UOW261
18x22	UOW234	UOW254	UOW242	UOW262
18x25	UOW235	UOW255	UOW243	UOW263
19x25	UOW236	UOW256	UOW244	UOW264
21x25	UOW237	UOW257	UOW245	UOW265

## NiTi Reverse Curve

Pack 10



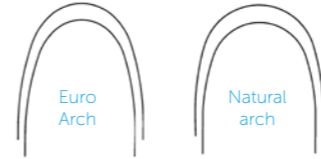
Round	Upper	Lower
0.012	UOW326	UOW331
0.014	UOW327	UOW332
0.016	UOW328	UOW333
0.018	UOW329	UOW334
0.020	UOW330	UOW335

Rectangular	Upper	Lower
16x16	UOW310	UOW318
16x22	UOW311	UOW319
17x22	UOW312	UOW320
17x25	UOW313	UOW321
18x22	UOW314	UOW322
18x25	UOW315	UOW323
19x25	UOW316	UOW324
21x25	UOW317	UOW325



## Stainless Steel

Pack 10



Round	Upper Natural	Upper Euro	Lower Natural	Lower Euro
0.012	UOW001	UOW021	UOW006	UOW026
0.014	UOW002	UOW022	UOW007	UOW027
0.016	UOW003	UOW023	UOW008	UOW028
0.018	UOW004	UOW024	UOW009	UOW029
0.020	UOW005	UOW025	UOW010	UOW030

Rectangular	Upper Natural	Upper Euro	Lower Natural	Lower Euro
16x16	UOW041	UOW071	UOW047	UOW077
16x22	UOW042	UOW072	UOW048	UOW078
17x25	UOW043	UOW073	UOW049	UOW079
18x25	UOW044	UOW074	UOW050	UOW080
19x25	UOW045	UOW075	UOW051	UOW081
21x25	UOW046	UOW076	UOW052	UOW082

## Stainless Steel - Individually Wrapped

Pack 10



Round	Upper Natural	Upper Euro	Lower Natural	Lower Euro
0.012	UOW011	UOW031	UOW016	UOW036
0.014	UOW012	UOW032	UOW017	UOW037
0.016	UOW013	UOW033	UOW018	UOW038
0.018	UOW014	UOW034	UOW019	UOW039
0.020	UOW015	UOW035	UOW020	UOW040

Rectangular	Upper Natural	Upper Euro	Lower Natural	Lower Euro
16x16	UOW055	UOW085	UOW061	UOW091
16x22	UOW056	UOW086	UOW062	UOW092
17x25	UOW057	UOW087	UOW063	UOW093
18x25	UOW058	UOW088	UOW064	UOW094
19x25	UOW059	UOW089	UOW065	UOW095
21x25	UOW060	UOW090	UOW066	UOW096

# Archwires

## Titanium Molybdenum Alloy

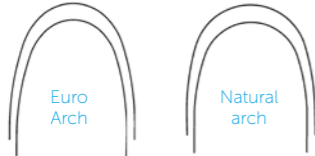
Pack 10



### Round

0.016  
0.018  
0.020

Upper Euro	Lower Euro
UOW525	UOW528
UOW526	UOW529
UOW527	UOW530



### Rectangular

16x22  
17x25  
19x25

Upper Natural	Upper Euro	Lower Natural	Lower Euro
UOW336	UOW342	UOW339	UOW345
UOW337	UOW343	UOW340	UOW346
UOW338	UOW344	UOW341	UOW347



# Archwires - Euro II

UnoDent Professional ortho archwires in the Euro II archform. Damon\* compatible and for all self ligation techniques is now available in Heat Activated Copper Niti with and without stops, Stainless Steel and TMA ensuring your practice has the correct wire at every stage of treatment. Individually-wrapped wires (Uno Packs) are delivered autoclavable envelopes.

## Pre-stopped Copper Niti - Individually Wrapped

Pack 10



### Round

0.013  
0.014  
0.016  
0.018

### Euro II

UOW505  
UOW506  
UOW507  
UOW508

### Rectangular

14x25  
16x25  
18x25

### Euro II

UOW509  
UOW510  
UOW511

## Copper Niti - Individually Wrapped

Pack 10



### Round

0.013  
0.014  
0.016  
0.018

### Euro II

UOW512  
UOW513  
UOW514  
UOW515

### Rectangular

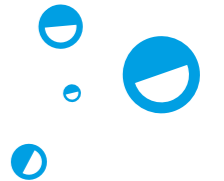
14x25  
16x25  
18x25

### Euro II

UOW516  
UOW517  
UOW518



Euro II Arch



\*Damon is a registered trademark of Ormco and does not imply endorsement by the manufacturer.

# Archwires - Euro II

UnoDent Professional ortho archwires in the Euro II archform. Damon\* compatible and for all self ligation techniques is now available in Heat Activated Copper Niti with and without stops, Stainless Steel and TMA ensuring your practice has the correct wire at every stage of treatment. Individually-wrapped wires (Uno Packs) come in autoclavable envelopes.

## Stainless Steel - Individually Wrapped

Pack 10



## Titanium Molybdenum Alloy - Individually Wrapped

Pack 10



Euro II Arch

## Round

0.018

0.020

## Euro II

UOW500

UOW501

## Round

0.016

0.018

0.020

## Euro II

UOW519

UOW520

UOW521

## Rectangular

16x22

17x25

19x25

## Euro II

UOW502

UOW503

UOW504

## Rectangular

16x22

18x25

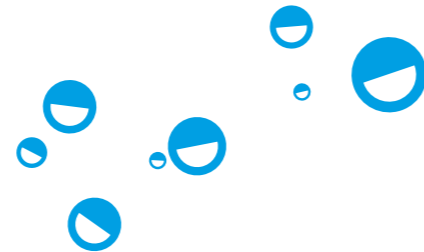
19x25

## Euro II

UOW522

UOW523

UOW524



\*Damon is a registered trademark of Ormco and does not imply endorsement by the manufacturer.

# Auxiliaries, Springs & Attachments



## Long Stainless Steel Ligatures

.010

UOW412

.012

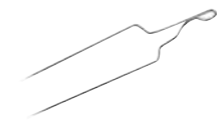
UOW413



## Short Stainless Steel Twisted Ligatures

.010

UOW414



## Long Kobayashi Ligatures

.012

UOW408

.014

UOW409



## Short Kobayashi Twisted Ligatures

.012

UOW410

.014

UOW411



## NiTi Open Coil Spring Spool

.010 x .030

UOW415

.012 x .030

UOW416



## NiTi Open and Closed Distalizing Spring

Pack 3.

.010x.045

UOW417



## NiTi Closed Coil Spring

mm length of spring excluding eyelets. Pack 10.

010' x 3mm UOW400

010' x 6mm UOW401

010' x 9mm UOW402

010' x 12mm UOW403

012' x 3mm UOW404

012' x 6mm UOW405

012' x 9mm UOW406

012' x 12mm UOW407



## Lingual Buttons

Pack 10.

Rectangular Posterior UOB106

Round Anterior UOB107



## Eruption Chain Gold Eyelet

Eruption Chain and Pad for bonding to impacted cuspids. Each.

Round Base UOB105

# Orthodontic Instruments



**PFI-6 Flat Plastic DE**  
Octagonal Handle -  
Autoclavable. Each.  
DPF106



**Bonding Tweezers**  
Serrated with alignment  
tip. Each.  
DPI391, DPI390, DPI311,  
DPI332



**Separating Plier**  
Each.  
DPI330



**Mathieu Narrow  
Tip Pliers**  
Heat sterilisable. Each.  
DNE165



**Mauns Cutter**  
Autoclavable. Stainless  
steel. Each.  
DCV300



**4 Carver  
Osteo-Mitchell DE**  
Autoclavable. Each.  
DCC170, DCC197, DCC198



**Double Ended Ligature  
Director- Octagonal**  
Autoclavable Handle. Each.  
DPI310



**Keats Buccal Tube  
Tweezer**  
Regular or Reverse Action.  
DPI357, DPI410.



**Mershon Band Pusher**  
Stainless steel. Each.  
DPI313



**Adams and Spring  
Former Pliers**  
64 or 65. Autoclavable.  
Stainless steel. Each.  
DPI164, DPI165

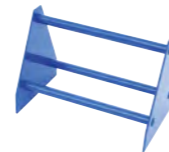
# Accessories



**Archwire Organiser**  
Archwire Holder With  
Cover. Each.  
222500



**Orthoblaster**  
A fully autoclavable sandblaster.  
Simple installation kit and  
sample of 50 micron abrasive  
grit are included. Each  
QYU050

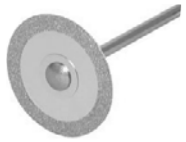


**A Frame Plier rack**  
Blue. Each.  
DPI358





# IPR



## Superflex Diamond Discs

Single and Double Sided Diamond Discs mounted on a fixed mandrel. Latch Grip. Each.

### Single Sided

19mm BHU155, BHU170  
22mm BHU160, BHU175

### Double Sided

16mm BHU230  
19mm BHU231  
22mm BHU232



## Stripping Discs

Serrated diamond discs with fine diamond grit. Latch Grip. Each.

### Double Sided RA

19mm BHU190  
22mm BHU220



## Disc Guards

Protects patient's lip, cheeks and gums from laceration. Pack 3. BHU500



## ProxyMate Intro Packs

10 strips (variety of grits), 2 handles. Refills Available. Single and Double sided grits KFS200 Double sided grits KFS000



# Debonding Burs



## 010-204 RA / RA 1170

Tapered Fissure 8 fluted. Latch Grip. Blister Pack Solo Peel. Single Dispensing Pull Back Label. Pack 5. 296500



## 014-204 / RA 1171½ 014-314 / FG 1171½

Tapered Fissure 8 fluted. Latch Grip. Blister Pack Solo Peel. Single Dispensing Pull Back Label. Pack 5.

Latch Grip RA 296501  
Friction Grip FG 296503



## 018-061 / RA 7006 018-061 / FG 7006

Round Head. Blister Pack Solo Peel. Single Dispensing Pull Back Label Pack 5.

Latch Grip RA 296505  
Friction Grip FG 296504



## 1172 RA 1172 FG

Tapered Fissure 8 fluted. Blister Pack Solo Peel. Single Dispensing Pull Back Label. Pack 10.

Latch Grip RA 296506  
Friction Grip FG 296507



## Orthodontic Bur Starter Kit

4 different trimmers/burs, 3 mounted lab polishers medium and fine grit, a polishing wheel and a screw type mandrel. KUO000

